

Inside This Issue

Why Lead?	1
Nominating Committee	2
Welcome New Members	2
Future of Wilderness	3
Board Notes	4
Trip Reports	5-11
Upcoming	12-13
Potluck	14
ExploraTalk	14
Leader Reminder	15
Trips Needed	15
Classified	15
Calendar	15
Picture of the Month	16

Dates to Remember

April 22	Leaders Meeting
April 24	Potluck
April 28	ExploraTalk
May 2	Bulletin deadline
May 6	Board Meeting

Complete current schedules at:
www.obsidians.org or
 Register-Guard – Outdoors – Tuesday

Why I Lead Obsidian Hikes

Janet Jacobsen

WHEN I JOINED THE OBSIDIANS IN 1976, I didn't expect to lead. It took some persistent phone calls and arm-twisting to get me to volunteer. When some of my favorite leaders could no longer lead, I finally decided it was payback time. I didn't want their favorite trips to disappear from the schedule. The more I led, the easier it became. Online signup makes it so convenient to submit a trip.

I discovered that leading was fun, at least 99% of the time. I liked sharing the out-of-doors and eating a power lunch with friends. It was energizing to network with other leaders. It was rewarding to meet people who had just discovered the Obsidians. At the end of the hike with tired feet and happy spirits, the participants'



smiles and thank-yous make it all worthwhile.

To paraphrase the words twittered by the sparrow to Peter Rabbit when in a dire situation, *I implore you to exert yourself* and give leading a try. Get your feet and mind together and find just the right hike to lead.

So you say: I can't lead because I can't figure out how to do online sign up.

Answer: Contact Judy Terry, summertrips@obsidians.org, who desperately wants to help walk you through the steps.

(Continued on page 3)

OBSIDIAN MEMBERSHIP REPORT

4/1/2015

Active Members 410
Associate Members 14
Honorary Members 6
Junior Members 7
Life Members 11

Total Members 448

The Obsidian Nominating Committee

THE OBSIDIAN NOMINATING COMMITTEE will meet later this month to begin the process of selecting three candidates to run for three-year terms on the Obsidian Board of Directors beginning January 2016. The election will take place at the October Annual Meeting at the Lodge. For more information about the election process, see Article IV of the Obsidian Constitution, available in *Members Only* on the Obsidian website. If you have any suggestions for nominations, please contact one of the members of the committee: Lana Lindstrom, Janet Jacobsen, Anne Bonine, Sharon Cutsforth, Laurie Funkhouser, Shellie Robertson, or email Matt Bell at president@obsidians.org



Welcome New
Members

Frank, Nikki
2727 Lawrence Street
Eugene, OR 97405
954-3050
mvfmyf@gmail.com

THE OBSIDIANS FACEBOOK PAGE

www.facebook.com/#!/theobsidians

Just click on the link and start using/viewing today!

OBSIDIANS, INC

P.O. Box 51510, Eugene, OR 97405

Website: www.obsidians.org

Board of Directors

Matt Bell, President
Shellie Roberston, Vice President
Susan Wanser, Secretary
Stewart Hoeg, Treasurer
Don Colgan, John Cooper, Sharon Cutsforth, Pat Esch, Tom Musselwhite, & Elle Weaver

Board meetings are held at 6 PM the first Wednesday of each month, except October when it is the Wednesday after the Annual Meeting, and no meeting in August.

Committee Chairpersons

Byways By Bus Sharon Cutsforth
Climbs Maryanne Reiter
Concessions Laurie Funkhouser
Conservation/SciEd Tom Musselwhite
Entertainment Susan Wanser
Extended Trips Chris Stockdale
Finance Stewart Hoeg
Librarian/Historian Lenore McManigal
Lodge Building Doug Nelson
Lodge Grounds John Jacobsen
Membership Elle Weaver
Online Wayne Deeter
Publications Lou Maenz
Publicity Jan Jacobsen
Safety Pat Esch
Summer Camp Lana Lindstrom
Summer Trips John Cooper
Trail Maintenance Matt Bell
Winter Trips Anne Bonine

THE OBSIDIAN Bulletin

© 2015

Published monthly except August and December. Articles, story ideas, letters to the editor and other editorial submissions should be emailed to:

bulletin@obsidians.org

For reprint rights, contact:

The Obsidian Bulletin

P.O. Box 51510, Eugene, OR 97405

Deadline

for May 2015 Bulletin

Saturday, May 2, 2015

March Assembly/Mailing Team

*Assembly & Mail Manager: Lou Maenz
Team: Tom Adamcyk, Don Baldwin, Clara Emlen, Lenore McManigal, Margaret Prentice, and Martha Welches.*

Editorial Team

*Writing & Editorial Staff - Bea Fontana, Janet Jacobsen, Joanne Ledet, Lou Maenz and Ethel Weltman
Copy Editors - Ethel Weltman & Nancy White
Graphics Design & Desktop Publishing - Stewart Hoeg*

The Future of Wilderness:

Building Community Support for Protecting Public Lands

A forum at Willamette Hall, Feb. 4, 2015

Tom Musselwhite

THE FOREST SERVICE IS PROPOSING A NEW FEDERAL LAND DESIGNATION, tentatively to be called the Forest Conservation Area (FCA), according to Cathy Corlett of the Many Rivers Group of the Sierra Club. Because prescribed management actions are required, the FCA differs from Wilderness. The conversation about Hardesty Mountain appears to be back on the table, along with questions like: is this resource designation created by administrative rule, or does it require legislation?

Cathy Corlett of the Sierra Club discussed the new designation being proposed by the Forest Service. The FCA, some suggested hopefully, might be more like the Old Growth Reserve designation currently in use since the Northwest Forest Plan was adopted. That seems unlikely, but hopefully it will be based on a new forest paradigm intended to protect a broader spectrum of forest values than past management practices. The FCA differs from Wilderness in that the new designation would allow management activities aimed at maintaining and restoring ecosystem services, increasing carbon storage, timber and forest products harvest (cutting down trees), and multi-use recreation... Restorative Forestry.

According to Pete Sorensen, Lane County Commissioner, increasing the percentage of Oregon's federal lands with Wilderness protection is more than just possible with enough community support. Only 4% of Oregon's federal land is designated Wilderness. By comparison, 8% of Idaho's federal land has Wilderness status, Washington 10%, and California 15%.

Wilderness with a capital W is the highest protection the federal government can provide federal land. There are Wil-

derness areas in National Forests, National Parks, National Recreation Areas, and National Wildlife Refuges. It is the standard for protection globally, according to Sorensen, and there are now approximately 107 million acres of Wilderness in the US. In Wilderness areas you can hike, camp, fish, hunt, snowshoe, and XC ski among other activities. Wilderness is protected from logging, mining, and encroaching human development. As one speaker joked, "Just leave your chainsaws and bulldozers at home."

Organizers and participants of the forum included Commissioner Sorensen and Dan Whalen, who works for US Senator Jeff Merkley in his Eugene office. Dan is a good contact if you are looking for ways to make your voice heard or get current on upcoming legislation. Kate Armstrong, vice-coordinator of the UO's Outdoor Program, talked about the OP's contributions providing outdoor experiences. Cathy Corlett, with the Many Rivers Group of the Sierra Club, spoke primarily about the Sierra Club's interests in Hardesty. The Forum's principal organizer, Oregon Wild, was represented by Bridget Callahan. Bridget and Oregon Wild are also good contacts for getting involved in defending Oregon's wild places. Bridget talked about the need for Wilderness protection at Crater Lake, Devil's Staircase, and the need for protections against encroaching development in eastern Oregon.

As recent evidence of what can happen, Wilderness victories in the just ended 113th Congress include seven Wilderness designations that were attached to the National Defense Authorization Act.

For more information email the Conservation, Science, & Education Chair at scied@obsidians.org.

(Leading, continued from page 1)

So you say: I can't lead because I have no sense of direction.

Answer: Choose your favorite hike and limit the size. Ask a leader to help you or email summer trips for suggestions.

So you say: I don't know how to get started.

Answer: Attend the new leader meeting April 22.

Leaders have the final word...

Here are some leaders' comments garnered from trip reports:

I really enjoyed leading the hike and sharing this area with such neat positive people. **Gary Kirk**

This is one of my favorite trails to hike in Oregon, so I was pleased to have seven other first-timers join me for this day's adventure. **Steve Johnson**

I thank all the participants who worked together, had fun, and were really happy to shed the wet gear and get into dry cars for the trip back!! **Mike Smith**

It was a pleasure to lead this trip on such a fine day! We lingered, enjoying the perfect weather, swapping stories and sharing chocolates. **Lana Lindstrom**

Board Notes

By Susan Wanser

President Matt Bell called the meeting to order. Other Board members present: Don Colgan, John Cooper, Sharon Cutsforth, Pat Esch, Tom Musselwhite, Shellie Robertson, Susan Wanser and Elle Weaver. Also present were: Anne Bonine, Barb Bruns, Wayne Deeter, Laurie Funkhouser, Stewart Hoeg, Janet Jacobsen, John Jacobsen, Doug Nelson and Marianne Reiter.

The Board approved the minutes of the March 2015 meeting.

Treasurer's Report: Stewart Hoeg reviewed the Budget-vs-Actual Report and the Balance Sheet. The Board approved payment of the bills.

COMMITTEE REPORTS

Summer Trips (John Cooper): The summer trips season is almost here. There are 58 trips scheduled to date. The committee, in addition to ongoing leader/trip recruitment, has been working on the format for the April 22 Leadership Orientation and Summer Trips Kickoff.

Winter Trips (Anne Bonine): For March there were 17 hikes, one educational tour of the water treatment plant and waste water plant, and Joella's annual SOLVE beach cleanup. There were no snow trips at all!!

Trail Maintenance (Matthew Bell): There was one outing in March in Spencer Butte Park. We worked to clean the main trailhead and clean drainage and pick up litter along the lower half of the Main Trail and the upper half of the Tie Trail.

Byways By Bus (Sharon Cutsforth): The March 3 Sauvie Island Birding trip was very successful. Our next trip is an overnight to Bandon, April 7 and 8. We will be looking for birds, shopping, enjoying the ocean and hoping to spot some whales.

Extended Trips (Chris Stockdale): Another extended trip has been added to the calendar. Pat Esch will lead a women's canoe/kayak trip to LCC Siltcoos Station (south of Florence) on September 9—11. Accommodations will be in cabins, each with a kitchen and bathroom.

Conservation, Science, & Education (Tom Musselwhite): Twenty-three attendees enjoyed Dave Predeek's talk about his adventures with the Oregon Natural Desert Association on the John Day River, in the Ochoco mountains, and along Owyhee River country of eastern Oregon.

Publications (Lou Maenz): The Publications Committee mailed 207 *Bulletins* in March.

Entertainment (Susan Wanser): Fifty-nine people attended Stormy and Todd's presentation at the March potluck.

Publicity (Janet Jacobsen): The banner for the tent canopy is on hold until we know more about the October 1, 2014 Fire Marshall's technical guidelines for anchoring canopy tents. The April issue of *Lane Monthly Magazine* should have an

article about the Obsidians. A reporter joined one of our Wednesday hikes to interview members.

Concessions (Laurie Funkhouser): Obsidians products were present at the ExploraTalk and Potluck for total sales of \$143.50.

Online (Wayne Deeter): There are now 4,449 photos in 319 albums in the Obsidian photo gallery. As of today, 3/31, we have 348 followers. I'm trying to engage people more actively on Facebook to make it more of a two-way conversation and more helpful to people who follow it. For example, I asked our followers which mountains they would like to see on our climb calendar; that's where the majority of the comments came from.

Library/Historian (Lenore McManigal): All of the trips printed in the March *Bulletin* have been recorded.

Lodge Building (Doug Nelson): There are two rentals tentatively scheduled (no contract signed yet); Oregon Mozart Players for April 25 and Eugene Gleemen for May 21.

Lodge Grounds (John Jacobsen): We had one work party for the Obsidian grounds on March 24 before the ExploraTalk and Potluck. We mowed, picked up the last of the winter debris, blew out the drives/parking and did other routine cleanup. Thanks to Jim Whitfield for his help.

Art Heritage Ad Hoc Committee (Jim Duncan): The ad hoc committee will meet Friday, April 17 at 11:00 at the Lodge to discuss the \$1,000 Ray Cavagnaro and Scherer Family donation. The members of the committee are Rick Ahrens, Jim Duncan (Chair), Sharon Duncan, Janet Jacobsen, John Jacobson, Peter Graham, and Doug Nelson.

NEW BUSINESS

The Board approved one new member.

The Board created a Board Nominating Committee and approved Anne Bonine, Sharon Cutsforth, Laurie Funkhouser, Janet Jacobsen, Lana Lindstrom and Shellie Robertson as its members. This committee will present three nominees to the Board by the July Board meeting. If anyone has a recommendation for possible Board members, please contact one of the committee members.

OPEN DISCUSSION

In the Safety Manual it states that trip leaders will collect emergency contact numbers for the participants. John Jacobsen will provide a place for each participant to provide an emergency contact number when he or she signs up for the activity during the online signup process. John will attempt to have this ready so it can be explained during the Summer Trips Leader Orientation on April 22.

ANNOUNCEMENTS

The next Board meeting will be on May 6 at 6:00 PM.

The meeting adjourned for food at Kung Fu Bistro.

Trip Reports & Other Activities



Hikes

Tidbits Mountain

February 14, 2015

Leader: Steven Johnson

Photographer: Darko Sojak

Hike: 4.4 miles, 1,100 ft. (Moderate)

WHAT A GREAT DAY FOR A HIKE! Six of our group met at South Eugene High School in the cold fog then continued on to the trailhead, picking up two more along the way. At the trailhead, the weather was cool but the sky was a nearly cloudless blue. The trail itself was a bit more of a challenge than it typically is during the summer as there were five large trees across our path that require some undignified scrambling. From the summit in the warm sunshine, we were rewarded with an incredible 360-degree view of Oregon, from the Willamette Valley (still socked in by clouds at noon) to Diamond Peak in the south and Mt. Hood to the north. The lack of snow this winter may have dashed my hopes of trying out my new skis, but being



able to do a hike like this in February is very rewarding. Members: Carla Cooper, David Cooper, Janet Jacobsen, Steven Johnson, Diane Schechter, Darko Sojak, Barbara Theus. Nonmembers: David Lodeesen.

Rooster Rock

February 15, 2015

Leader & Photographer: Mike Smith

Hike: 6.6 miles, 2,300 ft. (Difficult)

THERE WERE ONLY TWO OF US, and we made short work of this lovely trail. Note: It is Trout Creek Trail from US 20, not the Rooster Rock trail further down, which probably goes straight up to the junction. I will try that one someday. There were a few blowdowns, a lot more wildflowers out



and the manzanitas were in bloom. The grade from the trail junction to the top is 26%, and the overall trail grade is 13%. Nice views on top of North and Middle Sister, and a few other hikers were coming up as we descended. I like this hike. It's not a tough drive to get there, and it is a really good workout. Wildflowers: yellow violet, snow queen and spring beauty. Members: Janet Jacobsen, Mike Smith.

Amazon Headwaters/Spencer Butte

February 18, 2015 through March 18, 2015

Leader: Janet Jacobsen

Hike: 6.2 miles, 1,530 ft. (Moderate)

THE HIKERS BY DATE WERE: FEBRUARY 18—Members: Keiko Bryan, Hilary Fisher, Barbara Gunther, Janet Jacobsen, Caroline Moore, Jorry Rolfe, Tom Rundle, Mike Smith. **FEBRUARY 25**—Members: Carla Cooper, David Cooper, Hilary Fisher, Barbara Gunther, Janet Jacobsen, Caroline Moore, Jorry Rolfe, Tom Rundle, Mike Smith, Barbara Theus. **MARCH 4**—Members: Carla Cooper, David Cooper, Barbara Gunther, Janet Jacobsen, Caroline Moore, Jorry Rolfe, Tom Rundle, Mike Smith, Barbara Theus. Nonmembers: Julie Barnas. **MARCH 11**—Members: David Cooper, Hilary Fisher, Barbara Gunther, Janet Jacobsen, Caroline Moore, Jorry Rolfe, Tom Rundle, Art Skach, Barbara Theus. Nonmembers: Alan Cohn. **MARCH 18**—Members:

Carla Cooper, David Cooper, Hilary Fisher, Barbara Gunther, Janet Jacobsen, David Lodeesen, Craig Molitor, Jorry Rolfe, Tom Rundle, Gary Spizizen, Tommy Young. Non-members: Alan Cohn, Beverly O'Connell.

Silver Falls State Park

February 21, 2015

Leader: Betty Grant

Photographer: Holger Krentz

Hike: 9 miles, 600 ft. (Moderate)

MOSS-LADEN BIG LEAF MAPLES with their massive gnarled trunks seem to be the guardians of the Silver Falls Creek canyon. These majestic trees framing the day's sunlight give rise to niches of green ferns and holler out, "Enjoy your walk in the rainforest!" And so we did. Starting out at the North Falls parking lot, we six enjoyed a near hour of solitude before the world crept steadily in to join us. What were we to expect for a sunny Saturday in February? Even then, the magic of walking behind water cascading with fury from the cliffs, wondering in amazement at the physics of falling water, searching for rainbows where sun and mist meet, and simply enjoying one another's company made for a most enjoyable day. Despite the relative warmth of the day, we hogged the couches around the fire at South Falls lodge to enjoy our lunch. We ate yummy homemade cookies (thanks Diane!) while we worked on solving the discrepancy between the mileage attributed to the Trail of Ten Falls, compared to the sum of mileage given on the sections of the



trail we hiked from Bill Sullivan's statement of trail mileage. We may have solved it; can you? Once we forced ourselves up and away from the seduction of the fire, rather than simply returning to our cars along the Rim Trail, we dipped back down into the canyon via Winter Falls trail and enjoyed views in reverse of several cascades. Such a nice day. Members: Carla Cooper, David Cooper, Betty Grant, Holger Krentz, Diane Schechter. Nonmembers: David Lodeesen.

Olallie Mountain

February 21, 2015

Leader: Steven Johnson

Photographer: Kathy Randall

Hike: 7.6 miles, 1,200 ft. (Moderate)

THIS WAS ANOTHER HIKE TO A PEAK that we were only able to do because of our warm, dry winter. We started out on the Pat Saddle trailhead at 10:00 AM with sunny, cool weather. After a half-mile, we headed off-trail to bushwhack



our way to Wolverine Lake—a good-sized lake tucked away in a secluded valley. The perimeter is a bit swampy, but it looked beautiful in the sunshine as a layer of bright white ice covered the entire lake. After scrambling back to the trail, we continued on to arrive at the Olallie summit for our lunch at 12:30. We sat in the sun while the mountains were obscured by clouds. A chilly breeze made us anxious to get back on the trail to warm up. On the way back to our vehicles, we counted 20 trees across the trail and resolved to report this to the forest service in hopes that this rewarding trail can be cleared for future hikes. Members: Janet Jacobsen, Steven Johnson, Barbara Theus, Sue Wolling. Nonmembers: Kathy Randall.

Rooster Rock

February 22, 2015

Leader: Randy Sinnott

Photographer: Darko Sojak

Hike: 6.6 miles, 2,300 ft. (Difficult)

NINE OF US TOOK A LEISURELY 9:00 AM DEPARTURE from South Eugene High School to visit this nearby hike. Twenty miles east of Sweet Home, the trail angles up through a fir forest just below the crest of a ridge dividing Trout Creek from the South Santiam. The wind was tossing the upper canopy as we trended steadily up to the base of Rooster Rock. From this point, just over three miles in, the wind let up and we climbed the final hundred yards to a nice overlook. The sun shone brightly, and we enjoyed a half-hour lunch gazing off to the Middle and North Sister and Iron Mountain farther east. Tom Rundle was kind enough to give a

geological explanation of the landforms around us. We encountered seven or eight hikers, who were fortunate to also have chosen this mild afternoon in February to enjoy this pleasant destination. Members: David Cooper, Barbara Gunther, Lana Lindstrom, Jorry Rolfe, Tom Rundle, Randy Sinnott, Darko Sojak, Fumiyo Tao. Nonmembers: Julie Barnas.



Iron Mountain
February 24, 2015
Leader: Janet Jacobsen
Hike: 7.8 miles, 1,900 ft. (Difficult)

HAVING ANTICIPATED A COLD AND WINDY DAY, our packs were soon stuffed with layers of clothing that were no longer needed as we headed up the trail in the sun. The blue sky contrasted with the dried out leaves and plants. We saw one lonely yellow buttercup, a few snow queens, and lumbered over eleven downed trees, one of them four feet in diameter. Near the top, it was easy to walk on the 50-foot section of trail covered with a very thin layer of packed snow. We had lunch on the platform in 60-degree weather with spectacular views of the snow-capped mountains including Mt. Hood and Mt. Adams. It was an amazing February day in the mountains. On the way down, we used a 1992 copy of the *Iron Mountain Self-Guided Nature Walk* to follow the 20 numbered signs identifying habitats and plant communities. It was a far-fetched February day in the mountains. We started hiking at 10:00 AM and were back at the cars at Deer Creek trailhead by 2:30 where we took time to pick up some of the overwhelming amounts of trash. Members: Janet Jacobsen, Steven Johnson, Jorry Rolfe, Barbara Theus. Nonmembers: David Lodeesen.

Amanda Trail and Cape Perpetua
March 1, 2015
Leader: Janet Jacobsen
Photographer: Carla Cooper
Hike: 7 miles, 1,300 ft. (Moderate)

WE PARKED THE CAR AT THE FIRST PULLOUT after we passed Devils Churn to start our hike on the Amanda Trail. We stopped at the Amanda Statue and then headed up into the forest. A field of the bright yellow leaves of skunk cabbage was a surprise. The steep parts on the upper trail now have some switchbacks that should help during the wet times. Once at the lookout, Dave headed back on the Amanda Trail to his car to facilitate the car shuttle. Carla and Mike kept their cameras busy. It was hard to leave the windless, sunny lookout and head down to the Visitor's Center where we met Dave coming up the trail. We then did a loop visiting Devils Churn, tide pools, and Cook's Trail. The weather was perfect! We departed for Eugene at 2:15. Mike's GPS recorded the distance as 7.4 miles and the elevation as 2,300 feet. Members: Carla Cooper, David Cooper, Janet Jacobsen, Mike Smith.



Erma Bell Lakes
March 1, 2015
Leader: Randy Sinnott
Photographer: Holger Krentz
Hike: 8.4 miles, 800 ft. (Moderate)

WE DROVE TO THE TRAILHEAD prepared to encounter snow. We had an alternate low elevation hike in mind just in case. It was March 1, after all, and the trailhead was at 4,300 feet. It was our good fortune that the snow appeared with only a mile to go. It was two to three inches deep at the trailhead parking lot, but the sun was shining brightly and the forecast was for air temperatures in the high forties. Everyone was willing to give it a go. The four mile spur road from Aufderheide to the Erma Bell trailhead was passable with a low clearance vehicle, but there were some short stretches deeply water-gouged. We opted to hike the loop in a clockwise direction. This strategy allowed us to tackle the high point of

the loop (just over 5,100 feet) earlier in the hike rather than later. If we encountered turnaround conditions, we could backtrack without as much mileage to



repeat. The entire hike was in snow, never over five inches deep. We averaged maybe one blowdown per mile, most of them easily stepped over. Snow fell in clumps from trees as the snow loosened from the boughs. We found tracks of elk, deer, coyote, snowshoe hare, mouse and other unidentified inhabitants of this snowy world. The lakes were the highlight, ice covered with snow-rimmed shores. The first five miles were a rolling up and down trek with the final three miles a near level jaunt. There were no long distance views but many close up photo ops of snow-burdened conifers, rhododendrons and stream beds. The rewards for pushing on, when we might have cancelled given the snowy start, were well worth it. Members: Holger Krentz, Jorry Rolfe, Randy Sinnott.

Mt. Baldy

March 3, 2015

Leader: Ruth Romoser

Hike: 6 miles, 800 ft. (Moderate)

IT WAS A BEAUTIFUL SUNNY DAY for the Mt. Baldy hike! There were many views of Eugene and nice people atop Mt. Baldy for pleasant conversations. The hike, starting from Amazon Community Center, to Baldy and back to the cars takes about three and one half hours. It is really nice to show hikers scenic walks and hikes in town. Members: Ruth Romoser. Nonmembers: Nikki Frank.

Potato Hill

March 7, 2015

Leader: Scott Hovis

Hike: 5 miles, 600 ft. (Difficult)

THERE IS LITTLE SNOW THIS YEAR so we left the snowshoes in the car. Still, we had a nice hike. At the top of Jack Pine road is the best view of the mountains in the area. After returning down the hill about 1/2 mile, we bushwhacked down to the blue diamond trail. And, it was a real bushwhack because we had to contend with tall and bushy mountain balm.

The trail is nicely maintained and a lot of it is on well-graded dirt roads. Solitude was great. We didn't see anyone and there was no humming of snowmobiles. Members: Keiko Bryan, Scott Hovis, Barbara Theus.

Maxwell Butte

March 7, 2015

Leader & Photographer: Steven Johnson

Hike: 9.8 miles, 2,500 ft. (Difficult)

AT OVER 6,200 FEET, Maxwell Butte is typically a cross country ski trail. However, our unusually warm and dry winter has allowed us to hike to other summits without any



problems with snow. I scheduled this last-minute trip to see if we could get really close to the Cascades. We were expecting a trail free of obstructions. The previous fall, several Obsidians joined with Rob Castleberry, a member of the Scorpions' trail crew, to clear the Maxwell Butte trail of over 150 fallen trees. However, we still found ourselves scrambling over a couple dozen trees. The first half of the trail was fairly clear of snow, but as we approached Maxwell from the west side, the snow got deep enough that we found ourselves post-holing through drifts as we searched for the trail. As we moved around to the exposed southern side, most of the snow thinned out to frequent patches, which allowed us to easily follow the trail. On the snow-covered summit, we were rewarded with a spectacular winter view of the Cascades. Members: Janet Jacobsen, Steven Johnson, Sam Miller, Mike Smith. Nonmembers: Consuelo Gomez.

Lillian Falls/Salmon Creek

March 7, 2015

Leader & Photographer: Randy Sinnott

Hike: 7.6 miles, 2,200 ft. (Difficult)

A ROCK AND MUDSLIDE BLOCKED THE ROAD a full mile from the trailhead adding another two roundtrip miles to our hike. As the road (2421) dead ends at the trailhead parking

lot and amounts to a tree shaded, vehicle free lane bounded by tumbling Black Creek, it wasn't an unpleasant addition. Once we achieved the snowy shores of Waldo, a stunning, placid blue on this sunny, windless afternoon, we ate lunch for nearly half an hour. Afterwards, we hiked south along the shore to visit Klovdahl Bay, site of an ambitious hydro-



electric project that was born and died over a couple decades in the early 20th century. As the plan was envisioned, Waldo would have lost depth much faster than it was replenished, resulting in a much diminished version of the gem we enjoy today. Our explorations added an additional two miles to our hike bringing it to an 11.6-mile adventure. The 2421 road leading to the trailhead had two spots in which water had cut effective barriers to low clearance vehicles. It is eight miles from the end of paved roadway to the trailhead, most of it well surfaced, with the occasional pothole, but the eight miles adds half an hour driving time to a hike that would otherwise be quickly and easily accessible from Eugene. The trail itself is steeply pitched in places. Two old growth blowdowns over the trail were overcome by belly crawls; otherwise a handful of smaller trees were easily stepped over. Early into the trail were a few severely eroded sections of trail, but they were short and easily hiked over using caution. The upper reaches had stretches of soft snow, rarely over two inches in depth. Sunny weather, spectacular views and good company all made for a memorable adventure. A little history thrown in was an extra bonus. Members: Mari Baldwin, Jorry Rolfe, Tom Rundle, Randy Sinnott, Art Skach.

Pi Hike/Sweet Creek Falls

March 14, 2015

Leader: Janet Jacobsen

Photographer: Carla Cooper

Hike: 2.2 miles, (Easy)

In the pouring rain standing by our cars in the Target parking lot, we shouted the ten digits of the once in a life time ultimate Pi Day – 3.141592653 at 9:26:53. Then it was on to the Homestead parking lot to meet Paul and Barbara Beard

for our Sweet Creek amble in the rain past scenic cascading



waters, blooming trillium and skunk cabbage to the upper falls. Back at the cars, we decided the 2.2-mile round trip hike would suffice for the planned symbolic 3.14 miles. Instead we improvised a shower curtain canopy between the back of two cars to prevent soggy pie slices. Paul assured us that Barbara's berry pie only had 3.14 calories per slice. See the online photo gallery for hard to recognize smiling drenched hikers. It was a once in a lifetime hike!! Members: Barbara Beard, Paul Beard, Carla Cooper, David Cooper, Anna Hougardy, Christiane Hougardy, Mark Hougardy, Janet Jacobsen, Mary Livingston, Patricia Mac Afee, Helen Martz, Michelle Tambellini. Nonmembers: Arisia Miller, David Harmonmiller.

Brice Creek

March 14, 2015

Leader & Photographer: Randy Sinnott

Hike: 7.7 miles, 1,000 ft. (Moderate)

Torrential rains were predicted. Indeed, it was raining lightly when we left Eugene and set out for the wet valleys of the South Willamette Valley. We had hoped to leave a shuttle and do a one-way hike starting at the upper trail head, taking in Upper Trestle Falls, and ending at the lower trail head. Yet given the threat of rain and the fact we could all fit in one vehicle, we elected to change our strategy. We set out climbing first to Upper Trestle Falls, putting the 1,000 foot elevation gain behind us early on. The falls were attractive, tucked into a deep ravine, the trail skirting behind the waterfall. Hiking the loop counterclockwise, as we did, offers the best first glimpse of the falls. Regaining the Brice Creek Trail, we hiked another half-hour to a creekside strand of cobbled stones where we ate lunch. The rain held off, the sun almost peeked out, and we enjoyed an amazing walk through this climax forest. Half the party continued on to Cedar Creek campground, while the others returned to the upper trailhead to fetch the car and regroup for the ride



home. We stopped at Wildwood Falls on the way home to enjoy another of Oregon's natural wonders. We encountered rain on our return to Eugene, much needed for our local water table, but kind enough to have held off while we hiked. Members: Alan Curtis, Brenda Kameenui, Jorry Rolfe, Randy Sinnott. Nonmembers: Barbara Kay Cosby.

Magnolia Park and Mountain Gate

March 19, 2015

Leader: Janet Jacobsen

Hike: 4 miles, 500 ft. (Easy)

The first stop was the Ruff Park and Magnolia Arboretum tucked away in east Springfield along the banks of Cedar Creek. It was filled with the magnolia trees in various stages of bloom with the pale yellow Elizabeth stealing the show. We then drove across Main Street to the Rob Adams Memorial Park in the Mountaingate development where we started our uphill walk on a meadow trail leading into the woods. From there we walked on the paved streets to Forest Ridge Drive up to South 66th Place and the east side of Potato Hill. We skirted the road barriers to an interesting viewpoint of Spencer Butte, Blanton, and the east side of Pisgah. Some wanted to explore the steep trails leading up to Potato Hill, but it was time for lunch. All of us enjoyed exploring a new area and look forward to possible trail development. The walk was described in the Feb. 6, 2013 issue of *DASH*. Members: Steve Cordon, May Fogg, Janet Jacobsen, Ellen Johnson, Steven Johnson, David Lodeesen, Tom Rundle. Nonmembers: Mindy Hollenbeck, Nikki Frank.

Marys Peak

March 22, 2015

Leader: Janet Jacobsen

Photographer: Holger Krentz

Hike: 10 miles, 2,100 ft. (Difficult)

Six of us left the Junction City Safeway and headed for Philomath and the Woods Creek Road to the North Ridge Trailhead. We started hiking at 9:45 AM and were at the Observation Point/parking lot at 12:00. Wind, clouds and



rain made it easy for us to vote to forget the summit and to do a loop by hiking down to Connor's Camp to connect with Road 2005. Making light of the showers was good practice for Nancy, Dave and Carla, who will be doing the coast to coast in England in a few months. We were back at our cars at 2:30. Yellow wood violets were in abundance with a few trillium at lower elevations. I was able to lead this hike thanks to leaders, Dan Christensen and Mary Holbert, who in years past shared this trail with me many times. Members: Carla Cooper, David Cooper, Barbara Gunther, Janet Jacobsen, Holger Krentz, Nancy Whitfield.



SnowShoe Trips

Maiden Peak

February 20, 2015

Leader: Scott Hovis

Snowshoe: 16 miles, 2,000 ft. (Difficult)

WE CARRIED OUR SNOWSHOES from the Gold Lake snow park up to the shelter. They were needed for the 18 inches of packed snow when we hiked on to the summit. There were dramatic views on top of Maiden Peak. On Friday, we had the shelter to ourselves. Saturday, we shared the place with four others. The door needs a better latch system. It was necessary to prop a piece of firewood on it because the wind would blow it open. The last 1/2 mile to the top of Maiden Peak does not have blue diamonds. Carry a compass. Members: Mari Baldwin, Keiko Bryan, Scott Hovis.



Bus Trips

Sauvie Island Birding

March 3, 2015

Leader: Mary Ellen West, Assistant: Rick Ahrens

Photographer: Sharon Cutsforth

BIRDS IN THE AIR, BIRDS IN THE WATER, birds feeding on the ground, birds in nests, birds everywhere. The experience of visiting Sauvie Island in late winter is to see an assembly of snow and Canada geese, swans, sandhill cranes, ducks, egrets, herons, eagles and hawks preparing for their journey to northern breeding grounds or nesting locally. On March 3rd, the first Obsidian bus trip of 2015 had the experience of a beautiful sunny day with four Cascade peaks visible plus a great show of sandhill cranes,

eagles, ducks, geese and a very large heron rookery alive with great blues. Sauvie Island is west of Portland with an exit bridge off Highway 30 onto a large island, bordered by the Columbia River, the Multnomah Channel and a bit by the Willamette River. The *big show* is accessed from Reeder Road, several miles from the bridge. There are several designated viewing spots in this wildlife management area plus birds in the fields and trees. At the end of Reeder Road is an easy access to the Columbia River. Obsidians walked on the beach and could see the Warrior Rock Lighthouse three and a half miles away. Rick Ahrens was our expert birder and naturalist, a great contribution to the trip. Thank you, Rick. Members: Thomas Adamcyk, Rick Ahrens, Bill Arthur, Barbara Beard, Paul Beard, Paula Beard, Keiko Bryan, Marianne Camp, Mary Lee Cheadle, Lynda Christiansen, Sharon Cutsforth, Clara Emlen, Bea Fontana, Jane Hackett, Yuan Hopkins, Phyllis Hulse, Richard Hulse, Janet Jacobsen, Ray Jensen, Robert Jones, John McManigal, Lenore McManigal, Rose Marie Moffitt, Nola Nelson, Barbara Payne, Don Payne, Judy Phelps, Margaret Prentice, Liz Reanier, Ardys Ringsdorf, Chris Shuraleff, Janet Speelman, Richard Speelman, Mary Ellen West. Nonmembers: Sharon Gadowski, Denise Wilson.



Upcoming



A Day At The Zoo

May 12 (Tuesday)

Leader: Judy Phelps

Cost: \$60 (\$62 Nonmembers)

Reservations & checks: Barbara Payne, 746-1964

NEWSPERS FROM THE OREGON ZOO—a major transformation is under way. Thanks to public support the zoo's vision for a better future for wildlife is taking shape, with nearly half the zoo grounds getting an upgrade. The recently completed three-story Condors of the Columbia aviary includes an elevated viewing area offering visitors a rare up-close look at these massive birds—the largest in North America. Work is progressing on Elephant Lands; this world-class habitat will provide the entire herd great health and welfare, along with opportunities to make their own choices. When completed, visitors will discover these graceful giants moving through meadows, hills, mud walls and pools. The Encounter Habitat is already complete. See the elephants in their new digs adjacent to the concert lawn while watching construction crews hoist, dump, excavate and pour their way to an exceptional elephant habitat. Two young orangutans, Kumar and Bob, both recent arrivals, had their first outdoor meet-up at the zoo's Red Ape Reserve. The other resident orangutan, Inji, at 55 is the oldest Oregon Zoo resident and one of the oldest orangutans in the world. Come along to see these exhibits and all the rest of the zoo residents. Admission is included in the trip cost. There will be time for a leisurely tour of the grounds and to have lunch at one of several food places. If you want to bring a sack lunch, you will need to take it with you when we enter, as the bus will not be parked close to the entrance. We will leave Shopko at 8:00, have a coffee break at Santiam rest area, enjoy some hours at the zoo and be home by 6:00 PM—maybe even work in an ice cream stop on the way home.

Wildwood Recreation Area & Salmon River

Date: June 30 (Tuesday)

Leaders: Paul & Barbara Beard

Cost: \$48 (\$50 nonmembers)

Reservations/Checks: Mary Lee Cheadle 689-1085

THIS TRIP WILL FIND OBSIDIANS AND FRIENDS traveling to the Welches area and into the Wildwood Recreation Area located off Hwy. 26. This scenic trip will include some of

the best rivers and trails Oregon has to offer, especially for seniors looking for an area with short walks. The Salmon River with its excellent nature path features an underground viewing area of trout and steelhead in their natural habitat. With headwaters in the Trillium Lake and Salmon-Huckleberry Wilderness area, the river runs a short distance of 35–40 miles before its confluence with the Sandy River. Much of the river is protected wilderness with many waterfalls. For the hardy and experienced hiker, this river also has much to offer. *Oregon Field Guide* featured kayaking part of the river with some 80 foot waterfalls and beautiful pools. We will eat our sack lunches in a good picnic area with great blacktop walkways. Come and experience a beautiful summer day walking beside this pristine river. (Some trails are wheelchair accessible.) Our homeward route will take us to Hwy. 99E and the Bauman Farms at Gervais. The Oregon strawberries should still be available, so bring your cooler.

More Food IV

Date: July 16 (Thursday)

Leader: Mary Ellen West

Cost: \$50 (\$52 nonmembers) Janet Speelman 344-3019

Fun at Yellowstone & Jackson Hole

Date: Sept 13 -19 (Sunday - Saturday)

Leader: Sharon Cutsforth

Cost: \$1,124 (\$1,138 non) Barbara Payne 746-1964

Fall Color-North Santiam & Breitenbush Rivers

Date: Oct 8 (Thursday)

Leaders: Paul and Barbara Beard

Cost: \$48 (\$50 nonmembers) Mary Lee Cheadle 689-1085

Christmas Party at the Lodge

Date: Dec 3 (Thursday) 2–4 PM

Desserts and entertainment

Contact: Liz Reanier 687-1925

Cost: \$1 (at the door)

Bus trip information is also available on the Obsidians home page: www.obsidians.org

Contact information at: bustrips@obsidians.org

Sharon Cutsforth, Bus Committee Chair, 746-4929

Oregon Garden & Silver Creek Falls Extended Trip

May 21-22, 2015

Leader: Nancy Whitfield

Trip is limited to 20 participants

WELCOME THE HEIGHT OF SPRING with an overnight trip to the Oregon Garden Resort. The trip will start

with an approximately seven-mile hike at Silver Creek Falls State Park. After checking into the Oregon Garden Resort in the late afternoon, you can ride the tram for a half-hour tour through the garden or meander on your own or both. Dinner is available at the resort. The following morning can include

(Continued on page 13)

(Continued from page 12)

further exploration of the Oregon Garden.

Friday, participants can head home or proceed to nearby Schreiner's Iris Gardens. Hopefully the iris will be in full bloom! If that isn't quite enough, a short hike through historic Mission Park in the afternoon will cap off the day. Nearby Wheatland Ferry is an interesting way to cross the Willamette River—almost like flipping a page back in time. If you return by this route you will drive through the scenic heart of the valley.

The trip price includes a buffet breakfast. Participants are

responsible for their own lunches and dinner. The cost is based on sharing a room with two queen beds. Cost per member: \$60 (\$65 nonmember). Single rooms per member: \$110 (\$115 nonmember).

A day use charge of \$5 per car must be paid at Silver Creek Falls.

Signup begins April 5; within five days of signing up send a check for the full amount to Nancy Whitfield, PO Box 51510, Eugene, OR 97405. Email Nancy at ndwhitfield@gmail.com with any questions. Members have 48 hours priority for signing up. There will be a short pre-trip meeting in early May.



MOUNT PISGAH ARBORETUM

TRAILSIDE PRUNE AND GROOM Sat, April 11, 10 AM–1 PM

SPRING DISCOVERY TOURS ARE ABOUT TO KICK OFF and thousands of school children will be learning about the environment at Mount Pisgah Arboretum. Come help us get the trails ready by pruning low-hanging vegetation and removing trail obstructions while exploring the Arboretum's abundant wildflowers. Meet at the Arboretum Visitor Center. Tools, gloves, and a parking pass will be provided to volunteers (we suggest you bring along a water bottle). Please RSVP at w/site@mountpisgaharboretum.org if you plan to attend.

ARBORETUM BENEFIT Sun, April 12, 8 AM–10 PM

Where: 16 Tons Cafe, 2864 Willamette Street, Eugene

ON SUNDAY, APRIL 12, 16 TONS CAFE will donate a portion of all sales to Mount Pisgah Arboretum. You can start with breakfast and enjoy a full day of food and beverages. Kids are welcome to join in the fun with special coloring projects, and Satori Bob will play at 6 PM. Come eat, drink, and be merry! The trees will thank you.

POLLINATION ECOLOGY WALK Sun, April 12, 10 AM–12 PM

JOIN ARBORETUM ASSISTANT SITE MANAGER August Jack-

son for a tour of the Arboretum's wildflowers and their pollinators. Discover how floral shape and color can influence successful pollination and how flowers attempt to choose their visitors. Learn the foraging and nesting habits of common native bees, and meet a cartoonish bumblebee-mimic fly that finds a home on Mount Pisgah's prairies. Meet at the Arboretum Visitor Center. \$5, members free.

FRONT ENTRANCE CLEANUP Sat, April 18, 10 AM–1 PM

HELP US SPRUCE UP OUR FRONT ENTRANCE landscaping in preparation for our upcoming Wildflower Festival. Meet at the Arboretum Visitor Center. Tools, gloves, and a parking pass will be provided to volunteers (we suggest you bring along a water bottle).

Please RSVP at w/site@mountpisgaharboretum.org if you plan to attend.

WILDFLOWER WALK Sun, April 19, 10 AM–12 PM

JOIN LOCAL ECOLOGISTS PEG BOULAY AND BRUCE NEWHOUSE in enjoying April wildflowers at the Arboretum. Peg and Bruce will identify and talk about flowers and trees, birds and bees, and anything else you please! Rain or shine. Meet at the Arboretum Visitor Center. Co-sponsored with NPSO. \$5, members free.

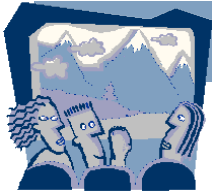
TRAIL WORK Sat, April 25, 10 AM–1 PM

JOIN US AS WE ADD A NEW LAYER OF BARK MULCH to one of the Arboretum's many trails. Meet at the Arboretum Visitor Center. Tools, gloves, and a parking pass will be provided to volunteers (we suggest you bring along a water bottle).

Please RSVP at w/site@mountpisgaharboretum.org if you plan to attend.

Jenny Laxton, Education Program Coordinator
Mount Pisgah Arboretum

At The Lodge

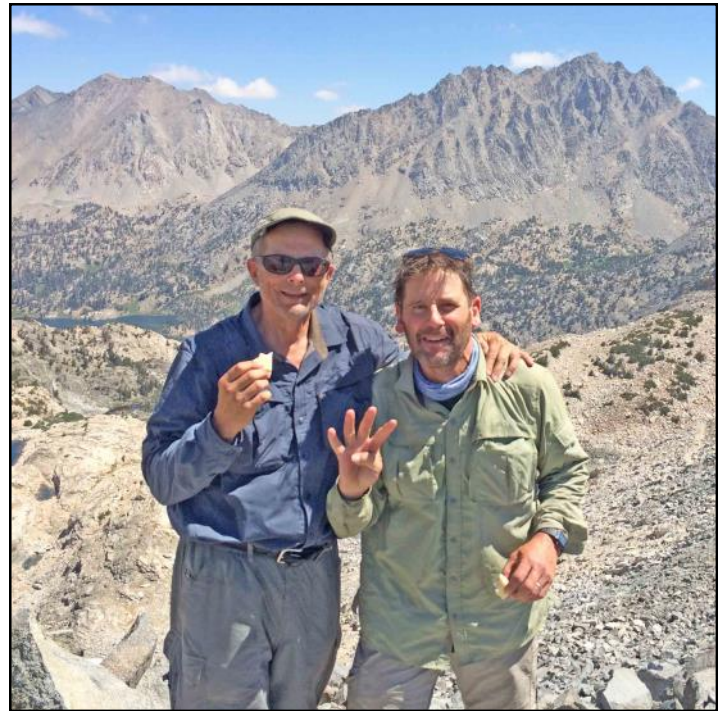


POTLUCK

Friday April 24 at 6:30 PM

John Muir Trail

BOB WELCH will share his July–August 2014 experience of hiking 190 miles of the 210-mile John Muir Trail—fire had necessitated a start south of his intended Yosemite departure point. Welch and his brother-in-law Glenn Petersen, a doctor from Albany, made the north-to-south journey to the top of 14,505-foot Mt. Whitney—highest peak in the Lower 48—in 13 days, averaging about 15 miles per day. “As a native Oregonian I have a strong bias to my home state,” said Welch afterward, “but I have never seen this type of wilderness beauty before. It’s incredible.” With 643 miles of the Pacific Crest Trail under their belts, Welch and Petersen are hoping to piece together the rest of the 2,650-mile PCT in the next five years.



April Potluck

Friday, April 24, 2015

Social hour 6 PM, Potluck 6:30 PM, Program 7:30 PM
Obsidian Lodge

Bring your favorite potluck dish to share... along with plates, utensils and cups... plus \$1 to help cover club expenses.



ExploraTalk Tuesday April 28 at 7 PM

Denali Back Country

FORMER DENALI NATIONAL PARK SERVICE RANGER Charlie Loeb will give a slide presentation on the Wilderness Back Country of Denali at the Tuesday, April 28 ExploraTalk, 7 PM at the Lodge.

Denali National Park and Preserve is a 6-million acre park which has only one road, almost no trails, and abundant wildlife. Wilderness travel in Denali is very different from most national parks in the lower 48 states. While being easier to access than many of the remote parks in Alaska, it provides visitors with unique opportunities and challenges.

Charlie will discuss the best ways to experience Denali’s wilderness and wildlife, and will touch on some of the conservation issues and obstacles involved in protecting Denali’s wilderness for the future.

Charlie recently moved to Eugene from the Denali area, where he lived for most of the past 25 years. He is a former National Park Service ranger and planner at Denali, and he is a former president of the Denali Citizens Council.

Upcoming

Reminder:

Leadership Orientation and Summer Trips Kick Off
April 22, 6:30 PM at the Lodge



EVERYONE IS INVITED. Everyone's participation is needed. The program will cover the computer online system. There will be a skit on first aid and there will be an open discussion on leadership issues. The event will begin with a power bar taste-off—some home-made, some store-bought. Come cast your vote for your favorite. A raffle will be held and there will be first aid kits on sale. New, future, and experienced lead-

ers will have a chance to socialize and share ideas.

Classifieds

TO GIVE AWAY—Joe Lowry's portable massage table in good condition.

Call Diane at 514-0779.

Trips Are Needed!



SUMMER TRIPS START APRIL 1. There are more than 55 hikes on the schedule. Thanks to the leaders who have their trips already scheduled. For leaders who are figuring out what trips to lead, there is a need for wild flower hikes, canoe/kayaking trips, and waterfall trips. Inexperienced leaders might consider taking on an easy-rated trip to get the feel of it. Any member of the Summer Trips Committee would be glad to help with trip selection. See you on the trail.

John Cooper

Obsidian Calendar

April

- 9 Thu **King's Valley Hike M** Christensen 343-8941
- 10 Fri **Mt. Pisgah Hike M** Lindstrom 683-1409
- 11 Apr **Yachats to Walport Hike M** Jacobsen..... 343-8030
- 12 Sun **Mary's Peak Hike M** Smith..... 357-5208
- 12 Sun **Talking Stones Hike E** Hackett..... 953-7046
- 15 Wed **Spencer Butte Hike M** Jacobsen..... 343-8030
- 17 Fri **Ankeny Wildlife Bike M** Hughes..... 933-5542
- 18 Sat **Goodman Creek Hike M** Hackett..... 953-7046
- 18 Sat **Angel's Rest Hike M** Pierce 206-902-7326
- 19 Sun **Eagle Creek Hike M** Pierce 206-902-7326
- 19 Sun **Spencer Butte Hike M** Sojak 525-1124
- 22 Wed **Spencer Butte Hike M** Jacobsen..... 343-8030
- 22 Wed **Summer Leadership Class** Cooper 344-8517
- 23 Thu **Bike/Birding Wetlands E** Montgomery.. 688-7025
- 24 Fri **John Muir Trail** **Potluck**
- 24 Fri **Full Ridgeline Out/Back Hike D** Cooper.. 868-5427
- 25 Sat **Brice Creek/Trestle Falls Hike D** Wilken 343-3080
- 25 Sat **Walport/Yachts Hike M** Hovis 731-3412
- 25 Sat **Sweet Creek Falls Hike E** Ewing..... 344-9197
- 26 Sun **Patterson Mountain Hike E** Hackett..... 953-7046
- 28 Tue **Back Country Denali**..... **ExploraTalk**
- 29 Wed **Spencer Butte Hike M** Jacobsen..... 343-8030

May

- 1 Fri **Eugene/12 Bridges Bike M** Hughes 933-5542
- 1 Fri **Blacklock Point Bk Pk M** Hovis 731-3412
- 1 Fri **Eagles Rest Hike M** Camp..... 228-6004
- 2 Sat **Lowder Mountain Hike M** Jost 485-1612
- 3 Sun **Mt. Pisgah Sun/Moon Hike M** Jacobsen... 343-8030
- 8 Fri **Deer Creek Center Ext Trip** Stockdale 767-3668
- 12 Tue **A Day at the Zoo** Bus Phelps 726-0118
- 12 Tue **Little N. Santiam Hike M** Christensen 343-8941
- 15 Fri **Climbing in Venezuela** **Potluck**
- 16 Sat **Tamolitch Pool Hike E** Strahon 221-7730
- 16 Sat **Mt. Adams Climb** McManigal 503-635-9973
- 16 Sat **Mt. Hood Climb** Reiter..... 521-8472
- 19 Tue **To be determined**..... **ExploraTalk**
- 21 Thu **Pisgah-west side Hike M** Colgan..... 485-2787
- 21 Thu **Oregon Garden Ext Trip** M Whitfield..... 343-7163
- 22 Fri **Heceta Head Hike M** Soussan 345-3046
- 24 Sun **Diamond Peak Grad. Climb** Tufts..... 654-0214
- 27 Wed **Spencer Butte Trl Mnt M** Bell..... 503-884-8829
- 30 Sat **Erma Bell Lakes Hike E** Ewing..... 344-9197
- 30 Sat **Smith Rock Climb** Reiter 521-8472

June

- 2 Tue **Mt. Pisgah Sun/Moon Hike M** Jacobsen... 343-8030
- 6 Sat **National Trails/Ridgeline M** Bell 503-884-8829
- 6 Sat **3 Mile Lake Hike M** Hovis 731-3412
- 6 Sat **Mt. Washington Grad. Climb** Hamilton.... 343-6550
- 7 Sun **Duffy Lake Hike M** Terry..... 345-0720
- 13 Sat **Whale Watch Expl Tlk E** Ewing 344-9197
- 16 Tue **To be determined**..... **ExploraTalk**
- 20 Sat **Orcas Island, San Juans** Lindstrom 683-1409
- 24 Wed **Spencer Butte Trl Mnt M** Bell..... 503-884-8829
- 28 Sun **Mt. Whitney Climb** Hamilton 343-6550
- 30 Tue **Wildwood Rec Area** Bus Beard..... 994-2337

- 16 Thu **More Food IV** Bus West..... 343-5492
- 29 Wed **Spencer Butte Trl Mnt M** Bell..... 503-884-8829

August

- 26 Wed **Spencer Butte Trl Mnt M** Bell..... 503-884-8829



OBSIDIANS, INC. OBSIDIANS, INC. IS A NON-PROFIT ORGANIZATION
P.O. BOX 51510
EUGENE, OR 97405

RETURN SERVICE REQUESTED

PRESORTED STANDARD
US POSTAGE
PAID
EUGENE, OR
PERMIT 803



April 2015



Marys Peak Trailhead by Holger Krentz (See report on page 10)