

### Inside This Issue

2015 Bus Trips	1
Denali	2
Welcome New Members	2
Thank you	3
Board Notes	4
Trip Reports	5-7
Trails Winter Ready	7
Upcoming	8-9
Opinion on Wilderness	9
Birding Without Borders	9
Potluck	10
ExploraTalk	10
Bus Rally	11
Climb School	11
For Sale	11
Calendar	11
Picture of the Month	12

### Dates to Remember

February 24	ExploraTalk
February 27	Potluck
February 28	Bulletin deadline
March 4	Board Meeting

Complete current schedules at:  
[www.obsidians.org](http://www.obsidians.org) or  
 Register-Guard – Outdoors – Tuesday

## 2015 Bus Trips



### Let's Flock to Sauvie Island for Bird Watching

**Date: March 3 (Tuesday)**

**Leaders: Mary Ellen West, Rick Ahrens**

**Cost: \$47 (\$49 nonmembers)**

**Reservations & checks: Janet Speelman 344-3019**

**E**ARLY MARCH IS THE BEST TIME OF THE YEAR to see the greatest concentration of birds in Oregon—gathered at Sauvie Island, thirty miles west of Portland. Rick Ahrens will help us identify the birds we see. The birds are preparing for the flight north, putting on muscle and fat for their long journey. The 12,000 plus acres of the wildlife management area are alive with birds: snow and Canada geese, swans, sand hill cranes, ducks, shore birds, egrets, herons, eagles, hawks and song birds. The ancestors of these birds kept Lewis and Clark's Corps of Discovery awake all night when they camped on the island's shore line. Sauvie Island is bordered on the north by the Columbia River and on the east by the Willamette River. We will stop at designated spots to observe the birds and to view the Willamette River. The end of the road is three and a half miles from the Columbia, but the light house at the point is visible. Bring a sack lunch.

### Birding in Coastal Areas around Old Town Bandon

**Date: April 7 & 8 (Tues & Wed)**

**Leader: Sharon Cutsforth**

**Cost: \$166 (\$170 nonmembers)**

**Reservations & checks: Judy Phelps 726-0118**

**FLEXIBILITY AND WARM CLOTHES** will be the key words for this trip as one never knows what the coastal weather will bring. Our route will take us down I-5 to Roseburg and Hwy. 42 to Bandon. The plan is to spend time looking for birds along the Coquille River and the Pacific Ocean coast line, as well as leisure time to explore Old Town Bandon. Bandon Marsh National Wildlife Refuge, Bullard's Beach State Park, Coquille Point and Face Rock State Scenic Viewpoint all offer bird watching opportunities. Old Town Bandon is filled with delightful shops and numerous eating establishments. Enjoy great views from the waterfront boardwalk. Other possible stops could be Face Rock Creamery, Misty Meadows Jams and the Bandon Historical Museum. On Wed. we will head north on Hwy. 101, stopping at the Mill Casino for lunch (your cost). If time allows we will visit the Oregon Connection (House of Myrtlewood) before heading inland via Hwy. 38 at Reedsport. Perhaps we will see the elk at Dean Creek viewing area. We should arrive home around 6:00 PM.

Overnight lodging will be at Sunset Oceanfront Lodging, 347-2453; all rooms have microwaves and small refrigerators. A light continental breakfast is included. Lord Bennett's Restaurant is on site for dinner, menu and prices similar to McGraths.

Things to bring: rain jackets, binoculars, good walking shoes, sack lunch.

*(Continued on page 9)*

**One More Book About The 1967 Disaster On Mt. McKinley**  
***Denali's Howl: The Deadliest Climbing Disaster on America's Wildest Peak*, by Andy Hall (June 2014)**

**J**OURNALIST ANDY HALL, son of the Park superintendent, was five years old at the time of the accident in 1967. It made a big impression on him leading him to spend years researching survivors, lost documents, recordings, and rescue efforts. Among the five climbers lost were Obsidians Mark McLaughlin and Jerry Clark, in whose memories our Lodge's memorial wall was dedicated.

Member Gary Kirk, a climbing partner and friend of Mark McLaughlin, has had long conversations with Andy Hall and the authors of the three previous books written about the disaster. Gary shared some of their comments. Howard Snyder said that he was 24 years old when he wrote *The Hall of the Mountain King: the True Story of a Tragic Climb* (1973). Since then he has changed his mind on a lot of his early comments. Howard made an interesting observation about Mark and Jerry—if the expedition had been a success, he would have been more than happy to be a member on any expedition they were on. Joe Wilcox, leader of the expedition, presented his view of the climb in *White Winds: America's Most Tragic Mountaineering Expedition* (1981). Joe spoke at the Lodge in 2006 and has sent a summary of his comments about *Denali's Howl* to our club. Years later James Tabor wrote *Forever on the Mountain: The Truth Behind one of Mountaineering's Most Controversial and Mysterious Disasters* (2008) putting some of the blame on Hall's father for not rescuing the climbers. Andy's *Denali's Howl* book points out that his father was not a climber and had to make decisions based on what the higher-ups had to say.

Gary Kirk summarized with these words, "With age comes wisdom, understanding, less ego—but sadly for Wilcox he is still haunted by the tragedy, it's in his eyes."

For an in depth analysis of the first three books written about the disaster, I recommend reading a previous *Bulletin* article, *Remembering Obsidians Lost in the ... Disaster on Denali* by Marshall Jay Kandell in the January, 2007 issue. It is easily available on our website. When contacted about the new book Marshall commented, "This is a story that will never be told to everyone's satisfaction."

The books are on display at the Lodge and several are available at the Eugene Public Library. For more information contact Gary Kirk at [garyd-kirk@comcast.net](mailto:garyd-kirk@comcast.net)

**Janet Jacobsen**



Fisher, Hilary  
 5320 Saratoga Street  
 Eugene, OR 97405  
 342-2851  
[hilaryvj@uoregon.edu](mailto:hilaryvj@uoregon.edu)

Halpern, Jack  
 84870 S Willamette Street  
 Eugene, OR 97405  
 521-0746  
[jack.halpern@yahoo.com](mailto:jack.halpern@yahoo.com)

**THE OBSIDIANS FACEBOOK PAGE** [www.facebook.com/#!/theobsidians](http://www.facebook.com/#!/theobsidians)

Just click on the link and start using/viewing today!

**OBSIDIANS, INC**

P.O. Box 51510, Eugene, OR 97405

Website: [www.obsidians.org](http://www.obsidians.org)

**Board of Directors**

Matt Bell, President  
 Shellie Roberston, Vice President  
 Susan Wanser, Secretary  
 Stewart Hoeg, Treasurer  
 Don Colgan, John Cooper, Sharon Cutsforth, Pat Esch, Tom Musselwhite, & Elle Weaver

*Board meetings are held at 6 PM the first Wednesday of each month, except October when it is the Wednesday after the Annual Meeting, and no meeting in August.*

**Committee Chairpersons**

Byways By Bus ..... Sharon Cutsforth  
 Climbs ..... Maryanne Reiter  
 Concessions ..... Laurie Funkhouser  
 Conservation/SciEd..... Tom Musselwhite  
 Entertainment ..... Susan Wanser  
 Extended Trips..... Chris Stockdale  
 Finance ..... Stewart Hoeg  
 Librarian/Historian ..... Lenore McManigal  
 Lodge Building..... Doug Nelson  
 Lodge Grounds ..... John Jacobsen  
 Membership..... Elle Weaver  
 Online ..... Wayne Deeter  
 Publications ..... Lou Maenz  
 Publicity ..... Jan Jacobsen  
 Safety..... Pat Esch  
 Summer Camp ..... Lana Lindstrom  
 Summer Trips ..... John Cooper  
 Trail Maintenance..... Matt Bell  
 Winter Trips ..... Anne Bonine

**THE OBSIDIAN Bulletin**

© 2015

Published monthly except August and December. Articles, story ideas, letters to the editor and other editorial submissions should be emailed to:

[bulletin@obsidians.org](mailto:bulletin@obsidians.org)

For reprint rights, contact:

**The Obsidian Bulletin**

P.O. Box 51510, Eugene, OR 97405

**Deadline**

**for March 2015 Bulletin**

**Saturday, February 28, 2015**

**January Assembly/Mailing Team**

*Assembly & Mail Manager: Lou Maenz  
 Team: Tom Adamcyk, Don Baldwin, Sharon Cutsforth, Clara Emlen, Yuan Hopkins, Joanne Ledet, Lenore McManigal, Margaret Prentice, and Martha Welches.*

**Editorial Team**

*Writing & Editorial Staff - Bea Fontana, Jan Jacobsen, Joanne Ledet, Lou Maenz and Ethel Weltman*

*Copy Editors - Ethel Weltman & Nancy White*

*Graphics Design & Desktop Publishing - Stewart Hoeg*

# Thank You, Thank You, Grazie, Danke, Merci, Arigato, Tak...

## Premium Members

(Silver Members donated at least \$20, Gold Members donated at least \$70, and Platinum Members donated at least \$170 during 2014)

**Platinum Members:** Dick Hildreth and Kathryn Madden.

**Gold Members:** Joan Bradley, Wendy Dame, Don Doerr, Margot Fetz, Elizabeth Glover, Janet Jacobsen, John Jacobsen, Michael Landes, John McManigal, Lenore McManigal, Liz Reanier, Judy Terry, Elle Weaver, Birgitte Williams, and Sue Wolling.

**Silver Members:** Barbara Aten, Don Baldwin, Donald Bienvenue, Anne Bonine, Max Brown, Hal Busby, Deb Carver, Rob Castleberry, Dan Christensen, Lydia Christensen, David Cooper, Ralph Core, Sharon Cutsforth, Jim Duncan, Sharon Duncan, Larry Dunlap, Charles Durham, Clara Emlen, Rose Mary Etter, Jack Ewing, Joella Ewing,

Shirley Froyd, Judy Garwood, John Hartman, Mary Hawkes, Richard Heinzkill, Scott Hovis, Robert Jones, Brenda Kameenui, Verna Kocken, Sandra Larsen, Ann Lichtenstein, Ed Lichtenstein, Patricia MacAfee, Margaret Malsch, Diana Masarie, Juli McGlinsky, Chris Melton, Sam Miller, Chuck Mitchell, Michael Moffitt, Cat Nelson, Doug Nelson, Effie Neth, Jack O'Donnell, John Pegg, Lin Pierce, Ardys Ringsdorf, Jorry Rolfe, Ruth Romosoer, Ton Rundle, Karla Rusow, Gordon Sayre, Carol Scherer, Chris Shaffner, Velma Shirk, Mike Smith, Pamela Swisher, Ron Swisher, Betty Taylor (**in memory of Royal Murdock**), Charles Thomas, Dan Udovic, Brian Vollmer-Buhl, Liz Vollmer-Buhl, Susan Wanser, Nancy Whitfield, and Jim Woodward.

**Other Donations:** Patty Neis (**in memory of Clare Tucker**) and the Bus Committee (in memory of Barbara Flanders.)

## Committee Members

**Summer Trips:** John Cooper (Chair), Jan Anselmo, Don Colgan, Joella Ewing, Janet Jacobsen, Sandra Larson, Lana Lindstrom, Becky Lipton, Tom Musselwhite, Tom Rundle, Judy Terry and Lyndell Wilken.

**Winter Trips:** Anne Bonine (Chair), John Cooper, Judy Terry and Elle Weaver.

**Climbs:** Maryanne Reiter (Chair), Wayne Deeter, Alex Ellis, Ted Glick, Brian Hamilton, Marci Hansen, Danni Harris, Roy McCormick, Doug Nelson, Shellie Robertson, Gordon Sayre, and Dalen Willhite.

**Trail Maintenance:** Matt Bell (Chair), David Copper, Clara Emlen, Dan Gilmore, Todd Larsen, and Pat Soussan.

**Highways and Byways By Bus:** Sharon Cutsforth (Chair), Rick Ahrens, Ethel Allen, Bill Arthur, Barbara Beard, Paul Beard, Mary Lee Cheadle, Ray Jensen, Verna Kocken, Lenore McManigal, Barbara Payne, Don Payne, Judy Phelps, Liz Reanier, Janet Speelman, Dick Speelman and Mary Ellen West.

**Summer Camp:** Lana Lindstrom (Chair), Don Doerr, Steve Johnson, Chris Stockdale, Elle Weaver and Nancy Whitfield.

**Extended Trips:** Chris Stockdale (Chair), Jim Duncan, Pat Esch, Lana Lindstrom, Chris Shuraleff and Nancy Whitfield.

**Conservation, Science, & Education:** Tom Musselwhite (Chair), Joella Ewing, Tom Giesen, Effie Neth, Dave Predeek and Mike Smith.

**Publication:** Lou Maenz (Chair), Bea Fontana, Stewart Hoeg, Janet Jacobsen, Joanne Ledet, Ethel Weltman and Nancy White.

**Entertainment:** Susan Wanser (Chair), Joella Ewing, Laurie Funkhouser, Judy Garwood, Kathy Hoeg, Yuan Hopkins, Lana Lindstrom and Mary Livingston.

**Membership:** Elle Weaver (Chair), John Jacobsen, Helen Martz, Diane Schechter and Judy Sinnott.

**Publicity:** Janet Jacobsen (Chair), Carla Cooper, Lynne Eichner, Brian Hamilton, Mary Hamilton, Mark Hougardy, John Jacobsen, Jorry Rolfe and Darko Sojak.

**Concessions:** Laurie Funkhouser (Chair), Pat Bean, Keiko Bryan and Patty MacAfee.

**Online:** Wayne Deeter (Chair), Jan Anselmo, Marci Hansen, John Jacobsen, and Shellie Robertson.

**Finance:** Stewart Hoeg (Chair), Barb Bruns, Dan Christiansen and Lana Lindstrom.

**Library/Historian:** Lenore McManigal (Chair) and Janet Jacobsen.

**Lodge Building:** Doug Nelson (Chair), Clara Emlen, Ronald Green, Brian Hamilton, John Jacobsen and Cat Nelson.

**Lodge Grounds:** John Jacobsen (Chair), Marsha Barr, Rob Castleberry, Larry Dunlap, Clara Emlen, Joella Ewing, Ronald Green, Dick Hildreth, Brenda Kameenui, Gary Kirk, Ken Kodama, Joanne Ledet, Doug Nelson, Dave Predeek, Chris Shuraleff, Randy Sinnott, Sam Tracer, Jim Whitfield, Nancy Whitfield and Tom Woxell.

**Safety:** Patricia Esch (Board Rep and Chair), Anne Bonine (Winter Trips Rep), Sharon Cutsforth (Bus Trips Rep), John Cooper (Summer Trips Rep), Maryanne Reiter (Climbs Rep) and Lyndell Wilken (At Large).

# February Board Notes

## By Susan Wanser

President Matt Bell called the meeting to order. Other Board members present: John Cooper, Sharon Cutsforth, Pat Esch, Shellie Robertson, Susan Wanser and Elle Weaver. Also present were: Wayne Deeter, Laurie Funkhouser, Stewart Hoeg, Janet Jacobsen, John Jacobsen, Lana Lindstrom, Lenore McManigal and Doug Nelson.

The Board approved the minutes of the January 2015 meeting.

**Treasurer's Report:** Stewart Hoeg reviewed the Budget-vs-Actual Report and the Balance Sheet.

The Board approved payment of the bills.

## COMMITTEE REPORTS

**Summer Trips (John Cooper):** In addition to the members approved to the Summer Trips Committee at the last board meeting, Jan Anselmo, Don Colgan, Sandra Larson, Becky Lipton and Tom Rundle are also proposed as members of the committee.

**Winter Trips (Anne Bonine):** Proposed Winter Trips Committee members are Anne Bonine (Chair), John Cooper, Judy Terry and Elle Weaver. January had twelve hikes and one snowshoe trip. All other snow trips were cancelled due to poor trail conditions and lack of snow. Hopefully February will have better weather.

**Climbs (Maryanne Reiter):** The Climbs Committee met on January 19 to further plan the 2015 Basic Climb School and continue to build the 2015 Climbs List.

**Trail Maintenance (Matthew Bell):** There was one outing in January. Our volunteers worked on the West Trail continuing (finishing) the rock work, transplanting sword ferns, removing invasive plants, and cleaning the trailhead and kiosk. David Cooper is a proposed member for the Trail Maintenance Committee.

**Highways and Byways By Bus (Sharon Cutsforth):** We have been busy preparing for the 2015 bus trip season. Thanks to the Publicity Committee for posting the bus trip schedule online and for posting flyers on the website, Facebook and other places around town.

**Extended Trips (Chris Stockdale):** Dates for the extended trip to the Oregon Gardens, led by Nancy Whitfield, have been changed to May 21-22. Online signup for both the Orcas Island and Deer Creek Center extended trips will go live on February 15.

**Conservation, Science, & Education (Tom Musselwhite):** ExploraTalks scheduled for March and April include Dave Predeek on Preserving the West Little Owyhee River area on March 24, and Charlie Loeb on Back Country Travels at Denali on April 28.

**Publication (Lou Maenz):** The post office informed the Bulletin Committee that there is a monthly minimum of 200 *Bulletins* that can be mailed at the bulk mail rate.

**Entertainment (Susan Wanser):** Eighty-nine people attended Bill Sullivan's January presentation entitled *New and Endangered Hikes in Oregon's Wilderness*. Joella Ewing is proposed

as a member of the Entertainment Committee.

**Membership (Elle Weaver):** Currently there are 443 members: 405 Active, 14 Associate, 6 Honorary, 7 Junior and 11 Life. For comparison purposes there were 448 members (Feb. 2014), 463 (2013), and 450 (2012).

**Publicity (Janet Jacobsen):** We plan to participate in the 17<sup>th</sup> Earth Day Celebration Saturday, April 18 at EWEB's River Edge Plaza. We are discussing what kind of events we might submit to the *Register-Guard Saturday* Weekend section. We continue to update the Y Bulletin Board. Darko Sojak posts the Monthly Calendar flyers at REI and a few standard places around town. He also posts event ads and Monthly Calendar on Eugene, Salem and Corvallis Craigslist. Thanks to the committee chairs for keeping the website current.

**Concessions (Laurie Funkhouser):** The committee is starting the year with a new order providing resupplies of current merchandise and a new item - colorful Stow-n-Go bags. In addition, the committee is working on an order of new notecards.

**Online (Wayne Deeter):** There are now 4,151 photos in 296 albums in the Obsidian photo gallery. The email list handling has been updated to improve spam rejection.

**Finance (Stewart Hoeg):** The finance committee met to come up with recommendations to the Board on how to allocate 2014 investment income and to perform audits for 2014 of the general fund/treasurer and summer camp. The Committee is satisfied that entries in both the Summer Camp and General Fund accounts are accurate, complete, and in good order.

**Library/Historian (Lenore McManigal):** All of the activities printed in the January Bulletin have been recorded.

**Lodge Building (Doug Nelson):** The exterior entry light was replaced with an LED bulb. The McKenzie River Trust will be using the Lodge for a two day retreat on February 7 and 8.

**Lodge Grounds (John Jacobsen):** We had one routine spruce-up of the Obsidian grounds before the January potluck and the January ExploraTalk.

**Safety (Pat Esch):** The committee will be doing its annual First Aid Kit checking and restocking in February.

## NEW BUSINESS

The Board approved both applicants for new membership. The Board approved the proposed members for the Winter Trips Committee and the additional members proposed for the Entertainment, Summer Trips, Trail Maintenance, and Safety Committees.

## OPEN DISCUSSION

There was some discussion about club data, i.e., looking at participation and membership numbers as well as the number and timing of activities offered and difficulty of scheduled activities. The question of "how to attract new members" was again raised. This will be discussed again at a future meeting.

## ANNOUNCEMENTS

The next Board meeting will be on March 4 at 6:00 PM

The meeting adjourned for food (including appetizers in celebration of Janet Jacobsen's birthday) at Tasty Thai.

## Trip Reports & Other Activities



### First Aid

#### Outdoor First Aid

January 8, 2015

Leader: Patricia Esch

Photographer: Darko Sojak

First Aid

**W**E GATHERED AT THE LODGE on three successive January Thursday evenings to learn how to help injured trip participants in Laurie Monico's First Aid Course. Laurie is with the Eugene Mountain Rescue team. The first evening we had introductions in which we found a partner, interviewed each other to find out a little about them and what their dream trip would be. Then each of us gave a brief report of the interview. We went on to demos of arm and leg splinting and practiced the techniques we learned. Then we signed up for one of three pretend trips: a climb, a three day backpack or a day trip. On the second evening, we learned about how to deal with bleeding, hypothermia, frostbite, overheating, making a fire and how to make a body burrito (yep, just like it sounds). Laurie emphasized how important pre-trip planning is and reviewed the Obsidian Accident



Form and part of the Safety Manual. Then we broke up into our various pretend trip groups to organize ourselves and prepare for the next meeting, with orders to bring our packs with what we would ordinarily carry. The third session started with information on how to recognize when something bad has happened, stabilizing a patient and getting help. We

broke up into our trip groups and alternated around three stations: patient assessment, splinting, and moving patients. After a break for cookies, we returned to our trip groups and were presented with two separate accidents that were cooked up by Laurie and her experienced assistants. We needed to attend to a broken arm and a broken leg and we needed to treat both with whatever we had in our packs. Phew! Everyone got out safely. Thanks to Laurie, her able assistants, and the *guinea pigs* for all the hands-on learning in a great course! Members: Roberta Chord, Patricia Esch, Lisa Grissell, Barbara Gunther, Jane Hackett, Christiane Hougardy, Mark Hougardy, Scott Hovis, Janet Jacobsen, Debbie Krakauer, Janel Laidman, Tom Rundle, Darko Sojak, Jeanine Taylor, Jim Whitfield. Nonmembers: Liam Beckman, Barbara Theus.



### Hikes

#### Amazon Headwaters/Spencer Butte

December 24, 2014 through January 21, 2015

Leader: Janet Jacobsen

Hike: 6.2 miles, 1,530 ft. (Moderate)

**T**HE HIKERS BY DATE WERE: **DECEMBER 24**—Members: Barbara Gunther, Janet Jacobsen, Caroline Moore. Nonmembers: Barbara Theus. **DECEMBER 31**—Members: Carla Cooper, David Cooper, Barbara Gunther, Janet Jacobsen, Holger Krentz, Caroline Moore, Mike Smith. **JANUARY 7**—Members: Carla Cooper, David Cooper, Barbara Gunther, Janet Jacobsen, Caroline Moore, Jorry Rolfe, Tom Rundle, Mike Smith, Nancy Whitfield. Nonmembers: Hilary Fisher. **JANUARY 14**—Members: David Cooper, Barbara Gunther, Janet Jacobsen, Caroline Moore, Jorry Rolfe, Tom Rundle, Mike Smith, Barbara Theus. Nonmembers: Hilary Fisher. **JANUARY 21**—Members: Barbara Gunther, Janet Jacobsen, Craig Molitor, Caroline Moore, Jorry Rolfe, Tom Rundle, Mike Smith, Barbara Theus. Nonmembers: Hilary Fisher, Taylor Thomas.

#### Eagle's Rest

December 30, 2014

Leader: Mike Smith

Hike: 7 miles, 1,900 ft. (Moderate)

**SINCE THERE WERE ONLY THREE ON THE TRIP**, and due to potentially dangerous wind chill being a possibility in the

Eagle's Rest Area, we opted to stay close to home and hike Mt. Pisgah. Janet took us up the Zigzag Trail on Mt. Pisgah, where we realized this was not a simple matter, especially given ice and mud. Fortunately, we were in the sun and we were quite warm when we got to the top. We went down to the east trailhead. We climbed back up to the top and then came down the usual route. We didn't have quite the distance or the climbing that we had planned, but seven miles and 1,900 feet on Pisgah is a good day. For cold winter days with bright sunlight, one could do a lot worse than a hard workout on Eugene's outskirts. There are some tough trails there! Members: David Cooper, Janet Jacobsen, Mike Smith.

## **New Year's Day/Spencer Butte**

**January 1, 2015**

**Leader: Janet Jacobsen**

**Photographer: Carla Cooper**

**Hike: 2.2 miles, 600 ft. (Moderate)**

**THERE WERE JUST A FEW CARS IN THE PARKING LOT** when we met at 9:30 AM for our fourth annual New Year's



Day Hike. It was below freezing, but the blue sky and sun held promise for a spectacular view. Basking in the sun on top, we lingered for an hour to share snacks, share stories, and warm up with Bob Johnson's hot chocolate. With our glasses raised with pomegranate juice, Jane Allen gave the toast for a year of fertility and new experiences. Accolades to Bob for carrying the largest pack with water, stoves, cups, cider and hot chocolate packets. On the way down, we greeted hordes of hikers and dogs with wishes for a "Happy New Year." Members: Jane Allen, Mari Baldwin, Roberta Chord, Carla Cooper, David Cooper, Clara Emlen, Christiane Hougardy, Mark Hougardy, Janet Jacobsen, Bob Johnson, Brenda Kameenui, Sandra Larsen, Nancy Matthews, Diane Schechter, Darko Sojak, Pat Soussan, Jim Whitfield.

## **Cape Mountain**

**January 1, 2015**

**Leader: Jonathan Jost**

**Hike: 8 miles, 1,100 ft. (Moderate)**

**ON A CLEAR AND CHILLY MORNING**, five hikers gathered at SEHS at 8:00 AM. We loaded into one car for our trip to the coast. Arriving at the trailhead at 9:45 and on the trail by 10:00, the temperature was about 37 degrees and sunny. We proceeded up the Princess Tasha Trail, then on to the Scurvy Ridge Trail, stopping at the Indian Hitsi structure for a brief break. Further down the Scurvy Ridge trail, we broke for lunch at the bench. The views were minimal here, but the sunshine was welcome. We continued along the Scurvy Ridge trail, then on to the Blue Horizon Loop. We returned along the same route, arriving at the cars about 1:30 PM. Sunny weather and temps around 47 degrees, we decided to make a most enjoyable side trip to the beach for some brief whale watching and cheese and crackers before our return drive to Eugene. Members: Jan Anselmo, Richard Hughes, Jonathan Jost, Lana Lindstrom, Lynn Stearney.

## **Three Mile Lake/Tahkenitch**

**January 3, 2015**

**Leader: Janet Jacobsen**

**Photographer: Holger Krentz**

**Hike: 6.7 miles, 700 ft. (Moderate)**

**PROMISING WEATHER FORECAST:** Submit trip immediately!

Sun: Bring out the sunglasses. Warm: 60 degrees in the sun.

Remove: Three layers of clothing. No wind: Stuff wool



cap and gloves in pack. Four hikers: Smiling. "Can't we stay longer?" Members: May Fogg, Janet Jacobsen, Holger Krentz, Mike Smith.

## **Finley Wildlife Refuge**

**January 4, 2015**

**Leader: Jane Hackett**

**Photographer: Holger Krentz**

**Hike: 6 miles, 100 ft. (Easy)**

**SUNDAY WAS GRAY AND RAIN WAS EXPECTED**, but we had a chilly breeze to replace the rain, and we had a great trip. Rick Ahrens made this trip very interesting! Rick's knowledge of the area and the birds made this trip enjoyable to experienced birders and to those who wanted to learn more about birds. Short walks to blinds brought us tundra swan, dusky Canada geese, pintails and an assortment of

both mature and immature bald eagles. We saw some small birds, including one acorn woodpecker close to the headquarters. To tell the difference between a cackling goose and the dusky Canada goose was a challenge. The group did take a hike around the Mill Pond Loop where we could hear little birds, but they elected not to show themselves. On April 1, 2015, the other trails will open up and the shore and other



migratory birds will start passing through the refuge. I encourage all to make the short trip to Finley and take a look. Members: Rick Ahrens, Jane Allen, Lynda Christiansen, Carla Cooper, David Cooper, Steve Cordon, Jane Hackett, Debbie Krakauer, Holger Krentz, Lou Maenz, Ruth Romoser, Darko Sojak.

### North Fork Willamette

January 14, 2015

Leader: Jane Hackett

Hike: 5 miles, 600 ft. (Easy)

**A GREAT WINTER HIKE!** This is the third section of the trail I have led and my favorite so far. We got out of the fog at Lowell and had another view of helicopter logging. We did not get to the end of this section so there is more to discover. The river was gorgeous with many side streams and several areas of white water. This section has more ups and downs and it is easier going down river instead of up. Members: Jane Hackett. Non: James Lavagnino, Kelly Yucalvich.

### Exploring Springfield

January 17, 2015

Leaders: Lana Lindstrom and Evelyn Nagy

Hike: 5 miles, 0 ft. (Easy)

**IT WAS A NICE SOGGY WALK IN SPRINGFIELD** viewing the lovely historical homes in the Washburne District. Tour leader Evelyn provided us with a printed Walking Tour Guide of the district, which provided information about the original owners and their homes. All of the homes were built in the early 1900s and most are in the bungalow style, although we all agreed that many of them were quite a bit bigger than our image of a bungalow. We might have even learned a thing or two about architecture. After ambling through the historic area, we finished off with a brisk hike to the Knickerbocker Bridge along the Willamette River. Then off to a rewarding lunch at Plank Town. Members: Roberta Chord, Dan Christensen, Autumn Edwards, Clara Emlen, Jane Hackett, Lana Lindstrom, Mary Livingston, Helen Martz, Evelyn Nagy, Dave Predeek, Ginny Reich, Pat Sossan, Nancy Whitfield.



### SnowShoe Trips

### Salt Creek/Diamond Creek

January 3, 2015

Leader: Scott Hovis

Snowshoe: 3.5 miles, 300 ft. (Moderate)

**TO MY SURPRISE,** there was 18 inches of snow on the trail—no dirt trail. We left Eugene at 8:30 AM and were the first to park in the Salt Creek Sno-Park. When we returned, there were 40 cars! Safety issues! Drivers and snowshoers share the first bridge, which is a tight squeeze! Don't trust any guard rails and cliffs in the area. A special thanks to Roberta who reminded me that, "Attitude is everything." Members: Roberta Chord, Ted Glick, Lisa Grissell, Scott Hovis.

## Trails and Shelters Are Ready For Winter

*Lyndell Wilken*

**VOLUNTEERS HAVE BEEN BUSY** preparing the marked winter trail system and shelters at Willamette Pass. Diamonds have been replaced, trails cleared and shelters stocked with wood. Several trails have been renovated including the lower Taits Trail that joins the Upper Taits loop with the Pacific Crest Trail, and the Birthday Lakes Trail

from behind the Fuji shelter going north to the Fuji Mt. Trail. In all there are 70-80 miles of marked trails, six shelters and one lookout for winter use. Those planning on going to these trails can buy a waterproof Willamette Pass Winter Recreation map at the forest service offices or at REI. The maps are specific to the winter trails and shelters and are highly recommended.

## Upcoming

### Extended Trip Deer Creek Center Camping May 8–12, 2015 Leader: Chris Stockdale

**P**LAN TO SPEND A FEW DAYS CAMPING, hiking and sight-seeing in southern Oregon with fellow Obsidians. We'll be camping for four nights at the Deer Creek Center of the Siskiyou Forest Institute, 20 miles southwest of Grants Pass, just outside the small town of Selma. The Center lies at the gateway to the Illinois River Canyon and overlooks the scenic Deer Creek Valley. From there, we'll have easy access to hiking in the Kalmiopsis Wilderness and along the Illinois River trail, or to more hikes that lie further south. Check out Bill Sullivan's Southern Oregon hiking guide for hike descriptions. If you don't feel like hiking every day, spend a day exploring the Oregon Caves located a short drive away, canoeing or kayaking on Lake Selmac, or just hanging around the 850-acre Deer Creek property observing the abundant birdlife.

We will be camping on the grounds of the beautifully situated Deer Creek Center or staying in small RVs in the parking area. State-of-the-art solar bathhouses offer hot showers and flush toilets, while a covered pavilion equipped with a propane stove and refrigerator is reserved for our use. Participants will bring their own breakfasts and lunches, and dinners will be group activities included in the trip price.

Selma has a good grocery store, a local winery offers tapas/wine-tasting evenings. There's also a pizza parlor in the town.

The trip price includes four dinners and snacks. Participants will be responsible for their own breakfasts and lunches.

The Deer Creek facility offers a variety of classes that may be of interest to participants. See the website for more information on these classes: [www.thesfi.org](http://www.thesfi.org). Click on the link for Deer Creek to see photos and additional details about the place.

The trip price is based on per tent or RV space; if two people share their accommodations, the price reflects that.

Cost per member: \$90 (one person to tent or RV); \$71 (two per tent or RV). Nonmember: Add \$5.

Signup will begin on February 15; within five days of signing up send a check for the full amount, payable to The Obsidians, to Chris Stockdale, 32665 W. Saginaw Road, Cottage Grove, OR 97424. Call Chris at 767-3668 or email her at [happyhiker2010@hotmail.com](mailto:happyhiker2010@hotmail.com) with any questions. Members will have 48 hours priority for signing up.

Note: The signup sheet will reflect the single occupant price. If you are sharing accommodation, email Chris with the name of your companion and the price will be adjusted accordingly on the sheet.

## February Activities Mount Pisgah Arboretum



### MOUNT PISGAH ARBORETUM

#### Late Winter Bird Walk Sunday, February 15, 8:30–11:00 AM

**JOIN NATURE GUIDES CHRIS ROTH AND JULIA SIPORIN** for another monthly bird walk intended for people with all levels of birding experience. We'll use vocalizations, habitat, and behavior clues for identification of our winter and year-round residents. Come discover the Arboretum's avian diversity. Please bring binoculars. Option to continue the walk until noon for those who are interested. Rain or shine. Meet at the Arboretum Visitor Center. \$5, members free.

#### Winter Herbal Walk Saturday, February 22, 10 AM–12 PM

**THERE ARE BEAUTIFUL HERBAL ALLIES AVAILABLE IN WINTER.** Many trees have medicinal bark. Lichen is dropping for easy collection. There are tempting evergreens that heal all year round. Join Master Herbalist Sue Sierralupe on a walk through the woods to explore the botanical medicine flourishing in our backyard. Rain or shine. Meet at the Arboretum Visitor Center. \$5, members free.

Jenny Laxton, Education Program Coordinator for the Mount Pisgah Arboretum  
Phone numbers: office: 747-1504; cell: 207-4467  
[education@mountpisgaharboretum.org](mailto:education@mountpisgaharboretum.org)  
[www.MountPisgahArboretum.org](http://www.MountPisgahArboretum.org)



*(Bus Trips continued from page 1)*

### **A Day at the Oregon Zoo**

Date: May 12 (Tuesday)

Leader: Judy Phelps

Cost: \$60 (\$62 nonmembers) Barbara Payne 746-1964

### **Exploring Wildwood Recreation Area & Salmon River**

Date: June 30 (Tuesday)

Leaders: Paul & Barbara Beard

Cost: \$48 (\$50 nonmembers) Mary Lee Cheadle 689-1085

### **More Food IV**

Date: July 16 (Thursday)

Leader: Mary Ellen West

Cost: \$50 (\$52 nonmembers) Janet Speelman 344-3019

### **Fun at Yellowstone & Jackson Hole**

Date: Sept 13 -19 (Sunday - Saturday)

Leader: Sharon Cutsforth

Cost: \$1,124 (\$1,138 non) Barbara Payne 746-1964

### **Fall Color-North Santiam & Breitenbush Rivers**

Date: Oct 8 (Thursday)

Leaders: Paul and Barbara Beard

Cost: \$48 (\$50 nonmembers) Mary Lee Cheadle 689-1085

### **Christmas Party at the Lodge**

Date: Dec 3 (Thursday) 2-4 PM

Desserts and entertainment

Contact: Liz Reanier 687-1925

Cost: \$1 (at the door)

Bus trip information is also available on the Obsidians home page: [www.obsidians.org](http://www.obsidians.org)

Contact information at: [bustrips@obsidians.org](mailto:bustrips@obsidians.org)

Sharon Cutsforth, Bus Committee Chair, 746-4929

---

## **Opinion: Rethinking Wilderness Use**

*Tom Giesen*

**C**OME SUMMER, the mosquitoes will fade away, and it will be time to go to some wilderness and reconnect with that aspect of nature.

Typically that involves carpooling up to a trail head, parking and hiking to a wilderness destination (usually a mountain top) and returning the same way—or completing a loop. It is a nice social process in an often beautiful setting.

But I have come to experience that hiking process as a mobile noise bomb in the form of incessant chattering and noisy footfalls. It also leaves a powerful scent trail, and together they create *zoning*—the *people are here in summer zone*.

Because of the zoning, we almost never see animals. We are statistically free from any risk of harm from them.

The zoning covers most of the high country now—studies show that we far overuse those areas and in the pro-

cess, ruin habitat. There really isn't any wilderness anymore, although a consensus definition of wilderness is elusive.

But it is a broader issue than just spoiled wilderness. Our expectations have collapsed—we *accept* the domestication of wilderness by humans. Since humans dominate the formerly wild areas, wildlife is largely excluded, and hunting is diminished. The opportunity to hunt deer and elk, for example, is rarer and seasons are shorter.

While I do not hunt anymore, I was a hunter. There are ecological reasons to think a lot about hunting. We lost many things that are very important when we quit hunting as a society. A major loss is the experience of killing, and mourning that loss of life. Killing is now done by others, and we don't witness it, much less care.

But, everyone who eats meat should kill something large once a year to earn that death—and that meat—emotionally.

## **Birding Without Borders**

*Clara Emlen*

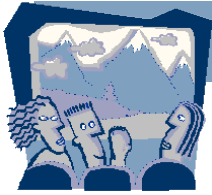
**I**F YOU HAVEN'T ALREADY, do check out Noah Strycker's daily blogs of his 2015 round the world continuous birding at [Audubon.org/noah](http://Audubon.org/noah).

Noah is aiming for 5,000 species of birds in one calendar year. Noah says he will "spend my time with passionate locals—individuals who care about their home patches, and

who are making a difference for birds in their own areas. Along the way, I will explore how birding, and the conservation of birds, fits into our new, crowded, globalized millennium."

Noah Strycker is our local (Creswell) writer, photographer, and adventurer. This info is from his first page/blog.

## At The Lodge



# POTLUCK

Friday February 27 at 6:30 PM

## 2014 Sochi Winter Olympics

**THE STARS WERE ALIGNED:** the Olympics have always been one of Lana's favorite events, she speaks Russian fluently, and the 2014 Winter Olympic Committee was seeking volunteers! At the end of a two-year process she spent almost three weeks in Sochi. Her job was in Event Services at the Cross Country Ski/Biathlon venue—helping spectators navigate the security system, providing directions, ushering, and generally assisting patrons. Lana will be sharing slides and stories about this unique experience at the February potluck program.



### February Potluck

Friday, February 27, 2015

Social hour 6 PM, Potluck 6:30 PM, Program 7:30 PM

Obsidian Lodge

*Bring your favorite potluck dish to share... along with plates, utensils and cups... plus \$1 to help cover club expenses.*



ExploraTalk Tuesday February 24 at 7 PM

## Solar Eclipses

**A TOTAL SOLAR ECLIPSE** is one of the most beautiful sights in nature. For a few seconds to maybe four minutes, the moon covers the sun, turning day into twilight, dropping temperatures as much as 20 degrees, making birds roost and transforming people.

If you haven't been able to catch the real thing, and even if you have, Obsidian Mike Smith will show us some spectacular sights in the comfort of our own Lodge. He will discuss why these must occur, what happens, the families of eclipses, why they are born and die.

He will put special emphasis on the August 21, 2017 total eclipse in the US, which will strike land first in Ore-

gon. He will have stills and videos showing that the sight of totality and the sound of people are both equally remarkable.

Eclipse Chaser Mike Smith has seen 14 total solar eclipses and six ring or annular eclipses on or over all seven continents and both poles. He lives for these—backpacking Alaska, canoeing the Boundary Waters, and finding a good hike somewhere. He is a retired neurologist and statistician who now volunteers for six different Oregon organizations.

Note: Since Mike joined the Obsidians in 2014 he has led seven trips. Watch the website for his new trips that are usually posted two weeks in advance.

# Upcoming



**Bus Rally 2015**  
Date: February 22, 1-3 PM  
Location: Lodge

**T**HE ANNUAL BUS TRIPS RALLY will be held on Sunday, February 22 at the Lodge, 1–3 PM.

Everyone is invited to come—nonmembers are welcome too. Refreshments will be provided by the hospitality committee, the same people who make bus trip coffee breaks special. This will be an opportunity to hear leaders share details about their trips, pick up a copy of the yearly bus trip schedule, and sign up for the trips you are interested in. Bus trips this year will take us looking for birds, enjoying the ocean, learning about food production, exploring Yellowstone, standing on top of a mountain, walking along rivers and more. If you have never been on an Obsidian bus trip, why not make this your year to try one out?

## 2015 Climb School



The Obsidians and Eugene Mountain Rescue will be instructing fundamentals of rock and glacier travel in the classroom and in field sessions at the 2015 Climb School.

April 6: Introduction to Climb School

April 9: Rock Classroom session

April 11-12: Rock Field sessions

April 16: Snow Classroom session

April 18: Snow Field session

Registration will open mid-February. Watch for details on the website and in the March *Bulletin*. For more information contact [climbs@obsidians.org](mailto:climbs@obsidians.org).

*Climbs Chair Maryanne Reiter*

## For Sale

**TREK 2000 ALUMINUM FRAME BIKE**

(owner is five foot four)

Price \$475: call Sylvia or Mike at 953-1842

## Obsidian Calendar

### February

11 Wed **Spencer Butte Hike M Jacobsen** ..... 343-8030  
18 Wed **Spencer Butte Hike M Jacobsen** ..... 343-8030  
20 Fri **Backpacking/Overnight** SSHoe Hovis ..... 731-3412  
22 Sun **Bus Trip Rally** ..... **Lodge**  
24 Tue **Solar Eclipses** ..... **ExploraTalk**  
25 Wed **Spencer Butte Hike M Jacobsen** ..... 343-8030  
27 Fri **Sochi Winter Olympics** ..... **Potluck**  
28 Sat **Tait's Loop** Snowshoe **D Wilkin** ..... 343-8030

### March

1 Sun **Booth Lake Loop** Xski **D Miller** ..... 484-4586  
1 Sun **Sisters X C/Snowshoe** Lindstrom ..... 683-1409  
3 Tue **Mt. Baldy Hike M Romoser** ..... 726-8154  
3 Tue **Sauvie Island** Bus West ..... 343-5492  
7 Sat **Potato Hill** SSHoe **D Hovis** ..... 731-3412  
13 Mar **Water Treatment tours** Hike Hougardy .505-7031  
14 Mar **Sweet Creek Falls Hike E Jacobsen** ..... 343-8030  
24 Mar **Wilderness Inventory** ..... **ExploraTalk**  
27 Mar **To be determined** ..... **Potluck**

### April

4 Sat **Sand Mountain** Xski **D Miller** ..... 484-4586  
7 Tue **Old Town Bandon Birding** Bus Cutsforth. 746-4929  
24 Fri **John Muir Trail** ..... **Potluck**

### May

8 Fri **Deer Creek Center** Ext Trp Stockdale ..... 767-3668  
12 Tue **A Day at the Zoo** Bus Phelps ..... 726-0118  
15 Fri **Maikey Lopera** ..... **Potluck**

### June

## Eugene Trails Plan (for Soft Service Trails )

**A** YEAR AGO there was a kick-off meeting for the Eugene Trails Plan—a plan to help guide and coordinate Eugene Parks and Open Space decisions about soft-surface trails. After a hiatus due to a number of factors including limited staffing resources and focus on implementing new trail construction efforts, this winter the project has kicked back into gear. A draft plan map and guidelines are being prepared based on input from citizens, local trail advocates and organizations, and city staff. The second public meeting has been scheduled for Thursday, February 26 6–8 PM. Meeting details will be announced soon.

A second survey is being conducted by Oregon State University (see link below) and we encourage you to participate. It should take around ten minutes.

[http://oregonstate.qualtrics.com/SE/?SID=SV\\_bg3yCuvaSQPOA0I](http://oregonstate.qualtrics.com/SE/?SID=SV_bg3yCuvaSQPOA0I)

If any questions, email [trails@obsidians.org](mailto:trails@obsidians.org)



**OBSIDIANS, INC.**    OBSIDIANS, INC. IS A NON-PROFIT ORGANIZATION  
**P.O. BOX 51510**  
**EUGENE, OR 97405**

**RETURN SERVICE REQUESTED**

PRESORTED STANDARD  
US POSTAGE  
**PAID**  
EUGENE, OR  
PERMIT 803



**February 2015**



*Photo by Carla Cooper from the top of Spencer Butte on 1/7/15*