

Inside This Issue

Digitizing Projects	1
Obituaries	2
Directory Changes	2
2014 Bus Trip Schedule	3
February Board Notes	4
Thank-you Volunteers	5
Trip Reports	6-8
Summer Camp	9
Climb School	10
Conditioning Hikes	10
SOLVE/Whale Watch	10
Climb School Poster	11
Potluck	12
ExploraTalk	12
2014 ExploraTalk Schedule	12-13
Need Winter Trips	13
Welcome New Members	13
Calendar	13
Picture of the Month	14

Dates to Remember

February 18	ExploraTalk
February 28	Potluck
March 1	Bulletin deadline
March 5	Board Meeting

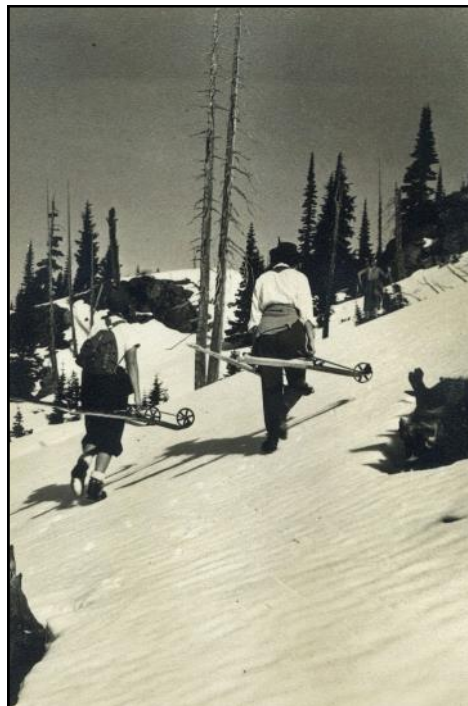
Complete current schedules at:
www.observians.org or
 Register-Guard – Outdoors – Tuesday

**2014
 Membership
 Directory
 Inside!**

Digitizing Projects

Janet Jacobsen

LANE COUNTY HISTORICAL MUSEUM is currently digitizing and cataloging Don Hunter’s slides, 150,000 images. Don, retired Audio Visual Director and professor emeritus of the University of Oregon, has been an Obsidian member since 1960, although his first hike with the club was in 1935, probably the Snow Train to Crescent Junction. He led photography trips for the Obsidians. Read more about Don Hunter and his connection to the club in an April 2007 *Bulletin* article by Lou Maenz, publications chair.



Scan of 1939 Obsidian photo

BERT EWING, OBSIDIAN MEMBER, volunteered to digitize the Obsidians archives dating back to the 1920s. He now has 25,000 images that include photo albums, summit registers, memory books, boxes of photographs and much more. This is just the tip of the iceberg for all of the materials stored at the lodge. Watch for an update later in the year.

THE BULLETIN WAS CITED IN AN ARTICLE, *Our Vanishing Glaciers: One Hundred Years of Glacier Retreat in the Three Sisters Area, Oregon Cascade Range,* by Jim O’Connor in the winter issue of the *Oregon Historical Quarterly*. The *Bulletin* citation, *Climate Change Causes Concern,* by Janet Jacobsen and Marshall Kandell, is in the December 2007 *Bulletin*. Thanks to Wayne Deeter who scanned our *Bulletins* and has them available on our website.

Don Hunter: observians.org/bulletin/Issues/2007_Bulletins/2007_04_Bulletin.pdf
 Climate Change: observians.org/bulletin/Issues/2007_Bulletins/2007_06_Bulletin.pdf
 Lane County Historical Museum: lanecountyhistoricalsociety.org/research-photocatalog.html

**Bus Rally Date Changed!
 Moved to Sunday, February 23
 1—3 PM**

Obituaries

Helen Knowlton 1915-2013

HELEN KNOWLTON, who passed away on December 25, 2013, continued her love of traveling when she joined the Obsidians in 1989, primarily to participate in the bus group. She lived in Oregon almost all her life but still found new areas to explore with the club, not only in Oregon but on thirteen extended trips outside the state. She participated in a total of 48 trips, the last in 2002 to view the fall colors.

She is survived by two children and their families.

Editor's Note: A complete obituary can be found in the Jan. 4th edition of The Register-Guard.

Ray Cavagnaro 1920-2014

THE OLDEST LIVING PAST PRESIDENT OF THE OBSIDIANS, Ray Cavagnaro, passed away on February 2. He would have been 94 in April. Ray first participated with the club in 1946 and his last trip was in July, 2013 to the coast with the bus group. During those many years he was very active with the Obsidians, going on 26 bus trips, 85 hikes and leading 23 trips. He also made eight climbs and was given the name Chief Red Face. Ray attended the first of his nine summer camps in 1950. Of those nine camps, three were by bus and most of the other camps were pack-in camps. Perhaps his greatest contribution to the club was being president in 1950. With his gracious and pleasing demeanor, Ray had a way of leading people without being dictatorial. One participant on a bus trip he led said, "Ray was a genial host who added much to the pleasure of the trip."

Editor's Note: At the time of publication no obituary has appeared in The Register-Guard.

Membership Directory Changes

A COUPLE OF CHANGES HAVE BEEN MADE to the 2014 Membership Directory that is enclosed with this month's *Bulletin*. Each member now has a separate entry, so that individual phone numbers can be listed. Another change was the decision not to list Junior Members in the printed directory. They will still be listed online in the *Members Only* section.

Changes to your contact information can be made throughout the year by accessing your online account and selecting the *Account Info* tab. Your new email address or phone number will show on the online member list. Updates can also be sent to membership@obsidians.org.

Donation in Honor of Bette Hack

WE WOULD LIKE TO GRATEFULLY ACKNOWLEDGE a generous donation from Kathy Madden and Bonnie Ward in honor of the late Bette Hack. This donation was accidentally omitted in recognizing the platinum membership renewals in the January *Bulletin*.

OBSIDIANS, INC

P.O. Box 51510, Eugene, OR 97405

Website: www.obsidians.org

Board of Directors

Matt Bell, President
Don Colgan, Vice President
Susan Wanser, Secretary
Stewart Hoeg, Treasurer
Sharon Cutsforth, Pat Esch, Tom
Musselwhite, Shellie Robertson & Elle
Weaver

Board meetings are held at 6 PM the first Wednesday of each month, except October when it is the Wednesday after the Annual Meeting, and no meeting in August.

Committee Chairpersons

Byways By Bus Liz Reanier
Climbs Brian Hamilton
Concessions Patty MacAfee
Conservation/SciEd Joella Ewing
Entertainment Susan Wanser
Extended Trips Chris Stockdale
Finance Stewart Hoeg
Librarian/Historian Lenore McManigal
Lodge Building Doug Nelson
Lodge Grounds John Jacobsen
Membership Elle Weaver
Online Wayne Deeter
Publications Lou Maenz
Publicity Mary Hamilton
Safety Pat Esch
Summer Camp Lana Lindstrom
Summer Trips Tom Musselwhite
Trail Maintenance Matt Bell
Winter Trips Anne Bonine

74 OBSIDIAN *Bulletin*

© 2014

Published monthly, except August and December. Articles, story ideas, letters to the editor and other editorial submissions should be emailed to:

bulletin@obsidians.org

For reprint rights, contact:

The Obsidian Bulletin

P.O. Box 51510, Eugene, OR 97405

Deadline

for March 2014 *Bulletin*

Saturday, March 1, 2014

Assembly/Mailing Team

For January *Bulletin*

Assembly & Mail Manager - Lou Maenz
Assembly Team - Tom Adamczyk, Don
Baldwin, Clara Emlen, Yuan Hopkins,
Margaret Prentice & Barb Revere

Editorial Team

Writing & Editorial Staff - Bea Fontana,
Joanne Ledet, Lou Maenz and Ethel
Weltman
Copy Editors - Ethel Weltman & Nancy
White
Graphics Design & Desktop Publishing -
Stewart Hoeg

2014 Obsidian Bus Trip Schedule



Monroe, Alpine, Finley Wildlife Refuge

Date: March 18 (Tuesday)

Leader: Verna Kocken

Cost: \$48 (\$50 nonmembers)

Reservations & checks: Liz Reanier 687-1925

LET'S EXPLORE SOME OF THE AREA NORTH OF US. Monroe and Alpine were booming with promise in the mid-1800s. Come to discover why. We will visit the new library and tour the Union High School in Monroe. We will travel to Alpine to visit the community center and the Pioneer Cemetery. We will glimpse the Alpine tavern, celebrated in the writing and cartooning of James Cloutier and then travel on to Bellfountain Park, with a view of historic Bellfountain Community Church and the Bellfountain School. We will go north to Finley Wildlife Refuge, where we will visit the new offices and store and, weather permitting, walk the Woodpecker trail. The bus will bring us back on Highway 99W where we will make a brief side trip past the Irish Bend School. We will return to Shopko before 5 PM. Bring a sack lunch.

Exploring NE California & Death Valley

Dates: April 6 - 12 (Sun - Sat.)

Leaders: Barbara & Paul Beard

Cost: \$850 (\$871 nonmembers)

Reservations & checks: Barbara Payne 746-1964

A TRIP OF A LIFETIME IS ON THE AGENDA for Obsidians and friends—spectacular scenery, back roads, rugged mountains, exciting adventures for all who participate. We travel through the Cascades and NE California to Reno the first day, with a night at the newly remodeled 20-story Grand Sierra Resort. Then off to Tonopah, Nevada via Hwys 395 & 95 for our second night. Following Route 267 into the northern part of Death Valley, we will tour Scotty's Castle and grounds and have lunch in the area. We spend our third night at the Furnace Creek Ranch. We will then be joined by a tour guide, volunteer ranger/friend of our driver, as we tour into the middle and southern parts of Death Valley—a very special time for experiencing

the valley and the wonders of the area. Lunch will be at Stove Pipe Wells, another historic place in the valley and then on to Ridgecrest, around the east side of China Lake and the Naval Weapons Center, National Training Center, and a tour of the Maturango Museum.

The next day, leaving the Ridgecrest area will find us heading to the mountains along route 395 to Bishop, CA. This route takes us on the east side of the Sierra Nevada, viewing Mt. Whitney and stopping by the visitor's center of the Eastern Sierras. We'll go through the mountains and past the lakes to Bishop, where we will spend the night. We follow 395 around parts of Lake Tahoe into Auburn, Yuba City, and Williams for our sixth night. All along the scenic routes of central CA, our bus driver, Augie, will have some treats for us. The seventh day will find us on I-5 headed for home—but wait, one last treat! For lunch we will be stopping at *Heaven on Earth* just north of Grants Pass. (Cost is included in your trip fees.) We'll be home on Saturday, the 12th of April at about 6:00 to 6:30 PM. Join your Obsidian friends for great memories and the trip of a lifetime!

Portland Chinese Garden & the Grotto

Date: May 13 (Tuesday)

Leaders: Sharon Cutsforth & Barbara Payne

Cost: \$65 (\$67 nonmembers) Mary Lee Cheadle 689-1085

More Food III

Date: June 18 (Wednesday)

Leader: Mary Ellen West

Cost: \$45 (\$47 nonmembers) Janet Speelman 344-3019

Mt. St. Helens, NW Trek Wildlife Park

Dates: July 15 - 16 (Tues - Wed)

Leaders: Sharon Cutsforth & Bill Arthur

Cost: \$180 (\$184 nonmembers) Barbara Payne 746-1964

Back to the Coast

Date: August 13 (Wednesday)

Leader: Mary Ellen West

Cost: \$48 (\$50 nonmembers) Janet Speelman 344-3019

Oregon History: Men (Families) & Machines

Date: September 11 (Thursday)

Leader: Mary Ellen West

Cost: \$55 (\$57 nonmembers) Janet Speelman 344-3019

Fall Color in the Cascades

Date: October 8 (Wednesday)

Leaders: Bill Arthur, Barbara & Paul Beard

Cost: \$45 (\$47 nonmembers) Mary Lee Cheadle 689-1085

Christmas Lights at River Forks Park

Date: December 2 (Tuesday)

Leader: Verna Kocken

Cost: \$57 (\$59 nonmembers) Liz Reanier 687-1925

Board Notes

February 5, 2014

By Susan Wanser

President Matt Bell called the meeting to order. Other Board members present: Don Colgan, Sharon Cutsforth, Pat Esch, Stewart Hoeg, Shellie Robertson, Susan Wanser and Elle Weaver. Also present were: Anne Bonine, Wayne Deeter, Joella Ewing, Brian Hamilton, Mary Hamilton, Kathy Hoeg, Patty MacAfee, Lenore McManigal and Doug Nelson.

The Board approved the minutes of the January 2014 meeting.

Treasurer's Report: Stewart Hoeg reviewed the Budget-vs-Actual Report and the Balance Sheet.

The Board approved payment of the bills.

COMMITTEE REPORTS

Winter Trips (Anne Bonine): During January we had 11 hikes, one snowshoe and two Xski trips. There were three trips cancelled.

Climbs (Brian Hamilton): Preparations for the 2014 Spring Basic Mountaineering course are well underway. We are planning a third classroom session and have increased tuition by 20%. Advertising flyers are posted at outdoor gear stores and other locations. Applications and tuition checks are starting to come in. The committee is exploring the possibility of offering an intermediate level climb school. We have also begun scheduling climbs for the upcoming season.

Trail Maintenance (Matthew Bell): There was one outing in January. We worked with Christer and Josh of EPOS to improve the Ridgeline Trail. We met at the Willamette & 52nd trailhead and hiked in to work on the switchbacks. We cleared drainage ditches, armored switchbacks and ditches with rocks, and transplanted sword ferns into switchbacks. I propose Pat Soussan as a member of the Trail Maintenance Committee.

Highways and Byways By Bus (Liz Reanier): Nine bus trips have been scheduled for 2014. Trip descriptions are posted on the website.

Summer Camp (Lana Lindstrom): There is a detailed article about Summer Camp in the upcoming *Bulletin*. Registration will open on March 17 at approximately 7:00 AM. For the first 48 hours, members will have preference. The registration form will be in the March *Bulletin* and also available online.

Extended Trips (Chris Stockdale): The Owyhee Rafting Trip has been cancelled due to lack of participant sign up and also the high possibility of water shortage. Both the Crater Lake and Malheur/French Glen trips are filled.

Conservation, Science, & Education (Joella Ewing): The January ExploraTalk was attended by 28 people.

Publication (Lou Maenz): Publications mailed 229 *Bulletins* at a cost of \$54.49.

Entertainment (Susan Wanser): Approximately 100 people attended Bill Sullivan's presentation in January.

Membership (Elle Weaver): Currently there are: 405 Active

Members, 16 Assoc. Members, 6 Honorary Members, 9 Junior Members and 12 Life Members for a total of 448 members.

Publicity (Mary Hamilton): Monthly calendars are posted at eight locations and several ads submitted on Craigslist. Mary does not check her email on a daily basis. If you need an urgent response, please either call or text her cell and leave a brief message for her to check email & date email was sent. Please include your name.

Concessions (Patty MacAfee): The committee began the ordering process for new merchandise. Once the orders are finalized, we expect to receive the items near the end of February.

Online (Wayne Deeter): There are now 2,094 photos in 164 albums in the Obsidian photo gallery. There are now 254 *likes* of our Facebook page, an increase of eight from January.

Library/Historian (Lenore McManigal): All of the activities reported in the January *Bulletin* have been recorded.

Lodge Building (Doug Nelson): There is a tentative rental for Saturday, March 1.

Lodge Grounds (John Jacobsen): We had one work party on January 23, prior to the potluck to clean up the place. Thanks to Ken Kodama for helping out.

Safety (Pat Esch): At our meeting on January 31 we discussed the restocking of expiring meds in the first aid kits and decided that because they are not being used since participants pretty much carry their own kits we will only restock Benadryl (for stings). We also reviewed the 2013 revised Safety Manual and will bring it up to date. The revised section, Handling Participant Problems, is under further discussion among the committee members.

OLD BUSINESS

There was some discussion about forming an ad hoc committee to explore many issues related to carpooling. This will be further discussed at a future meeting.

NEW BUSINESS

Proposed additional members to the Construction, Membership, Publications, Summer Trips, and Trail Maintenance Committees were approved.

In the 2014 Membership Directory each member is listed separately to allow individual cell phone numbers to be listed. The names of Junior Members are not included in the Directory.

The two new member applicants were approved.

Due to nonrenewal, 62 previous members have been inactivated.

Steven Johnson has been handling current details on the storage garage. Matt will seek someone to serve as the Chair of the Construction Committee.

ANNOUNCEMENTS

The next Board meeting will be on March 5 at 6:00 PM.

The meeting adjourned for food at Chapala.

2014 Committee Members

By-Ways By Bus: Liz Reanier-Chair, Rick Ahrens, Ethel Allen, Bill Arthur, Barbara Beard, Paul Beard, Mary Lee Cheadle, Sharon Cutsforth (Secretary), Barbara Flanders (Treasurer), Dennis Flanders, Ray Jensen, Verna Kocken, Lenore McManigal (Auditor), Barbara Payne, Don Payne, Janet Speelman, Dick Speelman, and Mary Ellen West

Climbs: Brian Hamilton-Chair, Dave Beardsley, Sue Carey, Wayne Deeter, Danni Harris, Bob Kaminski, Doug Nelson, Alexander Ellis, Maryanne Reiter, Shellie Robertson, and Dalen Wilhite

Concessions: Patty Mac Afee-Chair, Barbara Aten, and Keiko Bryan.

Conservation, Science and Education: Joella Ewing-Chair, Tom Giesen, Jennifer Haynes, Tom Musselwhite, Mike Piehl, and Dave Predeek

Ad Hoc Construction: Dave Beardsley, Rob Castleberry, Dan Gilmore, Steve Gunn, Brian Hamilton, Stewart Hoeg, Steven Johnson, Doug Nelson, and Guy Strahon



Entertainment: Susan Wanser-Chair, Joella Ewing, Carol Fairbanks, Laurie Funkhouser, Judy Garwood, Sheila Guildler, Kathy Hoeg, Yuan Hopkins, Lana Lindstrom, and Mary Livingston

Extended Trips: Chris Stockdale-Chair, Jim Duncan, Pat Esch, Lana Lindstrom, Helen Martz, and Nancy Whitfield

Finance Committee: Stewart Hoeg-Chair, Barb Bruns, Dan Christiansen, Lana Lindstrom, Stephen McCaffrey and Liz Reanier

Lodge Building: Doug Nelson-Chair, Brian Hamilton, John Jacobsen and Cat Nelson

Lodge Grounds: John Jacobsen-Chair, Max Brown, Sue Carey, Rob Castleberry, Wayne Deeter, Larry Dunlap, Clara Emlen, Joella Ewing, Chuck Gibson, Dick Hildreth, Scott Hovis, Brenda Kameenui, Gary Kirk, Ken Kodama, Joanne Ledet, Craig Molitor, Doug Nelson, Mike Piehl, Dave Predeek, Chris Shuraleff, Randall Sinnott, Sam Tracer, Jim Whitfield and Tom Woxell

Librarian/Historian: Lenore McManigal-Chair

Membership: Elle Weaver-Chair, Sharon Cutsforth, Laurie Funkhouser, Kate Parrish, and Diane Schechter

On-Line: Wayne Deeter-Chair, Jan Anselmo, John Jacobsen, and Shellie Robertson

Publications: Lou Maenz-Chair, Bea Fontana, Stewart Hoeg, Joanne Ledet, Ethel Weltman, and Nancy White



Publicity: Mary Hamilton-Chair, Brian Hamilton, Janet Jacobsen, Jorry Rolf, and Darko Sojak

Safety: Patricia Esch-Chair, Anne Bonine, Brian Hamilton, Verna Kocken, Tom Musselwhite, Nancy Whitfield and Lyndell Wilken

Summer Camp: Lana Lindstrom-Chair, Don Doerr, Steve Johnson, Chris Stockdale, Nancy Whitfield, and Elle Weaver

Summer Trips: Tom Musselwhite-Chair, Don Colgan, Joella Ewing, Laurie Funkhouser, Tom Giesen, Brian Hamilton, Daphne James, Janet Jacobsen, Sandra Larsen, Joanne Ledet, Lana Lindstrom, Becky Lipton, Judy Terry, Elle Weaver, Lyndell Wilken, and Jim Woodard

Trail Maintenance: Matt Bell-Chair, Clara Emlen, Dan Gilmore, Todd Larsen, and Pat Soussan

Winter Trips: Anne Bonine-Chair, John Cooper, Judy Terry, and Elle Weaver



Trip Reports & Other Activities



Hikes

Three Mile Lake

December 21, 2013

Leader: Becky Lipton

Hike: 6.7 miles, 500 ft. (Moderate)

FIVE HIKERS ENJOYED THIS FAVORITE COAST HIKE through beautiful and diverse coastal terrain, including high forested dunes, low sandy dunes, along the beach and to an inland lake. And as frequently experienced in December, we were able to work on our suntan while on the beach eating lunch. What a great way to de-stress from the Christmas hub-bub! Members: Becky Lipton, Andrew McIvor, Pat Soussan. Nonmembers: Jim Zajac, Tom Rundle.

Ridgeline Trail

December 29, 2013

Leader: Janet Jacobsen

Photographer: Tommy Young

Hike: 6.2 miles, 900 ft. (Moderate)



ORGANIZING A CAR SHUTTLE FOR SIXTEEN HIKERS turned out to be a mental challenge for the leader. I appreciated how the fast hikers patiently waited at intersections. It's not easy to hike slower than one's natural pace. Thanks to Don Colgan, who led the way, and to John Jacobsen, who took all of the drivers back to the Blanton Trailhead. Members: Rob Boese, Don Colgan, Carol Fairbanks, Tom Giesen, Janet Jacobsen, Branden Johnson, Jonathan Jost, Holger Krentz, Sandra Larsen, Verlean McCoy, Craig Molitor, Susan Sanazaro, Tom Woxell, Tommy Young. Nonmembers: Lynne Eichner-Kelley, Lynn Stearney.

Spencer Butte

January 1, 2014

Leader: Janet Jacobsen, Asst: Darko Sojak

Photographer: Bert Ewing

Hike: 2.2 miles, 600 ft. (Moderate)

TWENTY-TWO OF US CELEBRATED THE NEW YEAR on a sunny island above the sea of clouds with spectacular views of snow-capped mountains. Bob Johnson, our beverage chef, had two stoves going for hot chocolate and tea. Hikers shared a potluck of tasty treats. Janet poured a pomegranate drink for a multicultural toast of prosperity, fertility, and other blessings. Darko snapped the traditional group photo holding our New Year signs.



We lingered in the sun until, with reluctance, we headed down into the fog, greeting throngs of people on their way up. The parking lot was now packed with cars. One guest said that it was the most elaborate hike that she had been on. It was our third New Year hike in the sun. Members: Mari Baldwin, Marianne Camp, Clara Emlen, Bert Ewing, Janet Jacobsen, Bob Johnson, Lou Maenz, Verlean McCoy, Margaret Prentice, Barb Revere, Jorry Rolfe, Susan Sanazaro, Diane Schechter, Randall Sinnott, Darko Sojak, Pat Soussan, Gary Spizizen, Fumiyo Tao, Sam Tracer. Nonmembers: Carolyn Sojak, Sandy Hoskinson, Lynn Negus.

Cape Mountain

January 1, 2014

Leader: Jonathan Jost

Hike: 8 miles, 1,100 ft. (Moderate)

THE GROUP GATHERED AT 8:00 AM and left SEHS promptly for the coast (very foggy and COLD). We arrived at the trailhead at 10:00. Much warmer now and partly sunny, we proceeded up the Princess Tasha Trail, then on to the Scurvy Ridge Trail, stopping at the Indian Hitsi structure for a brief break. Further down the S.R. trail we broke for lunch at the bench where we were able to take in a nice view of the shoreline. We continued along the S.R. trail (in full sun at this point—Yahoo!) and merged with the Blue Horizon Loop, taking another break at

the bench while enjoying another gorgeous view in the sunshine. We returned along the same route. Members: Rob Boese, Chuck Eyers, Tom Giesen, Lisa Grissell, David Hawkins, Branden Johnson, Jonathan Jost, Becca Puleo, Karen Sieradski. Nonmembers: Lynn Stearney, Jennifer Haack.

River Campus Loop

January 3, 2014

Leader: Janet Jacobsen

Photographer: Tommy Young

Hike: 5.2 miles, 0 ft. (Easy)



WE MET AT SEHS PARKING LOT to start our walk through the campus to Straub Hall courtyard to see the wooden sculpture, House for Phineas Gage. Unfortunately, Straub Hall was barricaded for renovation. The next stop was to the U of O Science Complex to find the busts of Alan Turing, Thomas Condon, Einstein and John von Neumann, as well as the sculptures *Drosophila Fly Head* (Fruit Fly), and *Zebra Fish*. Several persons in our group recalled timely and historical facts about the notables and science research. A few days before, Alan Turing received a pardon from Queen Elizabeth II for his 1952 conviction of then illegal homosexual acts. We picked up speed on the river path noting the *Talking Stones*, especially the new one, *Frog*, near the Knickerbocker Bridge. The construction site and detour signs have been removed. It was fun to take the new path to Canoe Canal under the Whilamut Bridge to see the blue camas tiles and the Transportation Crossing concrete mural. Tom Rundle suggested that we return to the campus on the canal path. The Museum of Art (with free admission) and the Marche Café were our last stops. One hiker commented, "I had a great time and I learned something." Members: Clara Emlen, Kathy Hoeg, Janet Jacobsen, Verlean McCoy, Susan Sanazaro, Tommy Young. Nonmembers: Michelle Cordon, Steve Cordon, Kenneth Parramore, Tom Rundle, Jan Pylar, Lynn Negus.

Amazon Headwaters/Spencer Butte

Leader: Janet Jacobsen

Hike: 6 miles, 1,530 ft. (Moderate)

January 8, 15, and 22, 2014

JANET LED THIS HIKE ON THREE CONSECUTIVE WEDNESDAYS IN JANUARY. The hikers by date were: **January 8** - Members: Barbara Gunther, Janet Jacobsen, Bob Johnson, Craig Molitor, Tommy Young. Nonmembers: Tom Rundle. **January 15** - Members: Janet Jacobsen, Bob Johnson, Craig Molitor, Susan Sanazaro, Gary Spizizen, Tommy Young. Nonmembers: Tom Rundle. **January 22** - Members: Marsha Barr, Barbara Gunther, Janet Jacobsen, Bob Johnson, Lana Lindstrom, Craig Molitor, Susan Sanazaro. Nonmembers: Tom Rundle.

McDowell Creek

January 18, 2014

Leader: Janet Jacobsen

Photographer: Jerry Jones

Hike: 4.5 miles, 650 ft. (Easy)



WHO WOULD HAVE THOUGHT that when we left dreary and cold Eugene at 8:30 AM that we would spend the day hiking in the sun? It seemed like October not January. Our first stop was the Sweet Home Safeway to use the facilities and then on to McDowell waterfalls. By 12:00, we were back in Sweet Home at Los Dos Amigos for lunch. Next stop for our jovial hikers, who forgot their sunglasses, was Cascadia Park to hike the trails to Lower Soda Creek Falls and along the Santiam River until 4:00. Thanks to our drivers, Jan Pylar and Brenda Kameenui, who drove carefully back to Eugene in dense fog. The following day, one hiker reported that she had a sunburn. Members: Clara Emlen, Judy Garwood, Yuan Hopkins, Janet Jacobsen, Hazel Jones, Brenda Kameenui, Susan Sanazaro. Nonmembers: Sandy Hoskinson, Jan Pylar, Jerry Jones.

Amazon Headwaters/Raptor Center

January 20, 2014

Leader: Rick Ahrens, Asst: Janet Jacobsen

Hike: 2 miles, 300 ft. (Easy)

WALKING UP THE TRAIL, we followed the drumming sounds to spot a pileated woodpecker enthusiastically hammering away up high in an old tree. At the Cascade Raptor Center, we watched another handler weigh and feed Celilo, a bald eagle. We had a close up encounter with Freya, a peregrin falcon, perched on her handler's glove. Many of the birds were near the front of the cages making it easier for me to point out features and feather patterns. It is always impressive to see raptors up close. It was cold so we headed back down the trail for another observation of the woodpecker. The hike and CRC visit took two hours. Members: Rick Ahrens, Carol Fairbanks, Janet Jacobsen, Susan Sanazaro.

Yachats to Waldport

January 26, 2014

Leader: Jim Pierce

Photographer: Darko Sojak

Hike: 7 miles, 30 ft. (Moderate)

THE TWENTY-TWO OF US ON THE HIKE certainly had someone smiling on us. It was a perfect day—bright sun (behind us) and a slight offshore breeze for tall waves. The beach was crowded with folks enjoying the fantastic weather. Our twenty-two got

strung out over the seven miles, but we all enjoyed watching young Anna double the distance while playing in the surf and streams. We took a couple of great group pictures—one at the Big Stump left over from a tsunami event 1,700 years ago. For this outing, we changed the forest for the roar of the crashing surf. There were no ferns and mosses, but we picked up sand dollars, clam and mussel shells, and skate egg cases. My special thanks to Anne, Janel and Janet for helping to herd our sand lovers along. A post script: wading sand streams with grocery bags does not work well--use bread bags with rubber bands, but they only work well the first time. Members: Barbara Aten, Anne Bonine, Roberta Chord, Anna Hougardy, Christiane Hougardy, Mark Hougardy, Janet Jacobsen, Janel Laidman, Mary Livingston, Lou Maenz, Nancy Matthews, Jim Pierce, Cindy Rust, Susan Sanazaro, Karen Sieradski, Darko Sojak, Nancy Whitfield, Birgitte Williams, Tom Woxell. Nonmembers: Carolyn Sojak, Allan Sieradski, Kathy Wheatley.



Odell Butte

January 25, 2014

Leader: Sam Miller

Xski: 10 miles, 1,800 ft. (Moderate)

*The snow had begun in the gloaming,
And busily all the night
Had been heaping field and highway
With a silence deep and white.*

The stanza above, written by the 19th century American poet, James Russell Lowell, reminds us what we eagerly anticipate when winter fails to deliver sufficient snow. The ski to Odell Butte lookout was worthy despite sections of bare pavement and ice, with considerable sections of skiable snow. Five optimists enjoyed a summit lunch with expansive views of the surrounding peaks. Blue sky and sun are always a welcome alternative to the valley fog. Members: Chrissy Anderson, John Hartman, Lubos Hubata-Vacek, Andrew McIvor, Sam Miller.



SnowShoe Trips

Diamond/Salt Creek Falls

January 5, 2014

Leader: Scott Hovis

Photographer: Darko Sojak

SShoe: 3.5 miles, 500 ft. (Moderate)



Ski Trips

Redtop Mountain

January 19, 2014

Leader: Harold Thompson

Xski: 8 miles, 2,100 ft. (Difficult)

It was a pleasant surprise to find enough snow to ski right from the Crescent Lake Sno Park, without hiking up to start. Our hope for good snow conditions during this very low snow fall season increased along with the elevation as we went from 4,800 feet up to the 6,948 foot summit of Red Top Mountain. By the time the summit was reached at 12:30 PM, the snow was in good shape for the descent back. Some skiers took the north slope down and made the loop back via Pretty Lake, while others went back via the east side route. All were back at the cars by 3:15 PM. Weather on this sunny day was spring-like with the temperature approaching 50 degrees. Members: Chrissy Anderson, Steven Goins, John Hartman, John Hegg, Marge Huseman, David McAllister, Sam Miller, Catherine Nelson, Harold Thompson.

ICY CONDITIONS WERE ON THE TRAIL and I think everyone fell once. Did you notice this trail was featured in the *Register Guard* January 7, 2014? The author put our trail as one of the *best adventures* in our area. Safety concerns are the two bridges to cross that can be tricky. The car bridge is narrow and the wooden bridge can be hard to cross when deep-packed snow is present. Don't trust the guard rails and respect the cliffs in the area. Turn right one mile past the tunnel to a truly scenic area. Members: Scott Hovis, Darko Sojak, Harold Thompson. Nonmembers: Erin Dougherty, Debbie Krakauer, Craig Speck, Annette Thompson.

Upcoming Activities

Strawberry Mountain Summer Camp August 1-6, 2014

DID WE PICK THE RIGHT PLACE FOR SUMMER CAMP OR WHAT? According to the article in a January 7th *Register-Guard*, the #1 *Best Outdoors Adventures in the Northwest* is the Strawberry Mountain Wilderness! “Wrapped in high mountain peaks and glacier-carved valleys, this little-known wilderness in Eastern Oregon is populated with blue lakes, pine forest and alpine meadows speckled with wild strawberries. Mountain goats roam the high country and nine different streams begin here, their headwaters tumbling down waterfalls and creeks, from the summit of 9,038 foot Strawberry Mountain to the sun-baked desert below. The centerpiece of the wilderness is Strawberry Lake, a trout-filled lake surrounded by craggy peaks, which can be reached with an easy four-mile hike from Strawberry Campground.”

QUESTION: *What exactly is Summer Camp?*

ANSWER: It’s a time to focus on nature, reconnect with old friends and make new ones. No wifi or TV and this year, no chores! All the food you can eat! A typical day is breakfast at 7:30 - go hiking with a group at 8:30 - be back in plenty of time for a shower and *happy hour*; dinner at 6:30 - sit around the campfire or read in your tent - and asleep by 10:00. For more details, ask an Obsidian who has been before; there’s at least one on every hike or snow trip.

Q: *Where exactly is the Strawberry Wilderness and which campground will we use?*

A: Lake Creek Camp is approximately 32 miles SE of the town of John Day, Oregon. The facility is about 300 miles from Eugene. Please go online: www.lakecreekcamp.com. There are lots of pictures on the site, as well as directions. Registrants have a choice whether to stay in one of 10 cabins (self-selected), tent, or sleep in their vehicle. There is plenty of space for RVs and trailers. The staff at Lake Creek Camp will prepare hot breakfasts and dinners, and will provide the ingredients for our lunches.

Q: *What is the cost?*

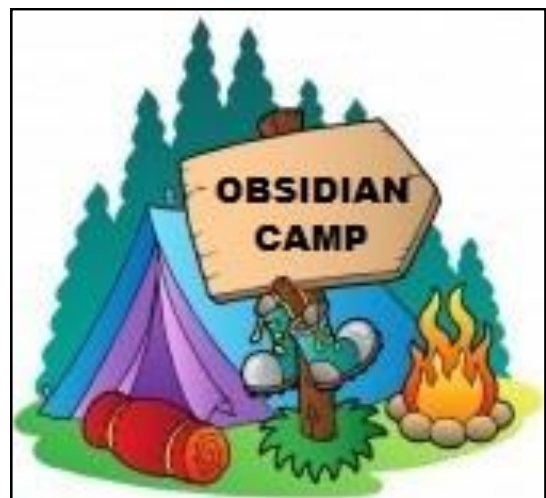
A: The cost for adult Obsidians and children over age 12 is \$270 for five days of camping and food. That includes all fees and three healthy, hearty meals per day. The cost for Obsidian children ages 5–11 is \$220. Children under five are free. Nonmember adults and children are \$300.

Q: *Isn’t the cost higher than we usually pay for camp?*

A: Yes, it is higher. But it is also significantly less work for the organizers! We are charging what the facility charges us, plus a trip fee. *Financial Hardship:* The Summer Camp Committee expects most members to pay the full registration fee. However, if you need help with the cost, you may subtract \$50 per person. Also, although the Lake Creek facility charges the same price for children as adults, we reduced that cost by \$50. The hardship subsidies will be paid out of Summer Camp reserves.

Q: *This sounds great! When can I sign up?*

A: Online sign-ups will begin on **Monday, March 17 (St. Patrick’s Day)** at approximately **7:00 AM**. Members will have preference for the first 48 hours. The maximum at camp is 100.



Q: *Do I have to pay the full amount upon initial registration? In the past, didn't we usually pay a non-refundable deposit and then send in the balance later?*

A: Until last year, that was the practice. But many folks forgot and needed to be reminded about paying the balance, plus it’s a lot more work for the Camp Treasurer. Last year, we changed the procedure so that registrants pay the amount in full within five days of registering online. If you cancel prior to June 30, the same refund policies we’ve had in the past will apply, i.e. members will receive a refund of \$235.

Additional information and the registration form will be in the *March Bulletin*, as well as online.

SOLVE Beach Cleanup and Whale Watch

THE SOLVE BEACH CLEANUP is scheduled for Saturday, March 22, with the Whale Watch the next day. Those who want to make a weekend of it can either camp or find overnight accommodations on their own.

Beach Cleanup:

We will leave Eugene at 8 AM, Saturday March 22, for our section of the beach at Washburn Park just north of Florence. The cleanup ends at 1 PM, leaving plenty of time to enjoy a day at the beach.

As SOLVE tries more and more to *Clean Green* we are asked to bring our own gloves, buckets and, cloth or mesh bags that we can clean and reuse. However, they will provide bags for those who don't have their own. Also, bring a sieve for picking up tiny pieces of plastic and styrofoam that can kill birds and fish if ingested.

Whale Watch:

We will leave Eugene at 9 AM, Sunday March 23, for the Newport Marina Charters and Store and have lunch along the way, either your own sack lunch or at a restaurant. We will meet again at 1:30 at the Marina across from the Hatfield Marine Science Center to board our boat.

Cost is \$30 per person plus the usual trip fee and mileage reimbursement. Checks made out to the Newport Marina should be sent to leader Joella Ewing, 2384 Washington Street, by March 10 to assure confirmation.

As safety and warmth are important, be sure to wear closed toe shoes with good tread and plenty of warm and waterproof clothing, because getting splashed often occurs.

Again, those wishing to attend both the beach cleanup and the whale watch are invited to make their own overnight arrangements.

2014 Climb School Beginning March 31

HAVE YOU EVER GAZED AT THOSE SNOW-COVERED PEAKS TO THE EAST and dreamed about standing on top of each of the Three Sisters, Mt. Hood, or other mountains in the Cascades? Many of us have thought we would like to experience the challenge and thrill of mountain climbing if only we had the skills and confidence needed to get started. If you are looking for a way to take that first step into the world of mountaineering, then we have what you need!

The Obsidians and Eugene Mountain Rescue will teach the fundamentals of rock and glacier travel in classroom and field sessions of the 2014 Climb School, beginning March 31. Whether you want to learn the basics or refresh your skills, this course is the ideal way to get started. Obsidians and Eugene Mountain Rescue members will be on hand to

help you learn knots, give you tips for gear, and to share stories and words of advice. At \$60 for Obsidian members or members of Eugene Mountain Rescue, and \$90 for non-members, the cost of this course can't be beat! A high teacher-to-student ratio makes the course even more valuable.

The Obsidians will be hosting graduation climbs for Climb School participants to put some of the new skills into practice. The climb fees for the graduation climbs are not included in the Climb School cost and the locations will be determined as the Obsidian climb schedule is developed. Watch these pages and the website for more information to come.

For learn more contact climbs@obsidians.org.

Climbs Conditioning Trips

THE CLIMBS COMMITTEE would like to announce its 2014 conditioning program. We will visit some local classic steep trails on a weekly basis, including Mt. Pisgah, Spencer Butte, and Hardesty Mountain. Bring your summit packs and carry about 25 or so pounds of gear. This will allow you to build your heart and leg muscles, and adjust to wearing a

pack. During our hikes we will have plenty of time to debate what items should be included in the pack as well as share stories about climbing. Our goal is cross conditioning, so we might get a few trail runs and bike rides in as well, all guaranteed to get your heart and legs ready for the upcoming climbing season.

**OBSIDIANS, INC.
&
EUGENE MOUNTAIN RESCUE**

Present

Climb School

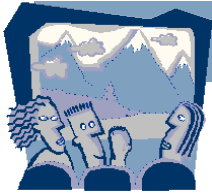


SPRING TIME IS THE RIGHT TIME TO START THINKING ABOUT MOUNTAINEERING whether you are learning the basics or refreshing your skills. Obsidians and Eugene Mountain Rescue will instruct the fundamentals of rock and glacier travel in the classroom and field sessions of the 2014 Climb School. This entry level course is recommended for anyone interested in participating in a climb where ropes, crampons, or other technical gear will be used to navigate hazardous terrain. Upon completion of the course, climb school graduates will be eligible to participate in most Obsidian climbs. The cost of the class is \$90 (\$60 for Obsidian & EMR members). Climb School is available for persons in good physical condition and at least 16 years old (or at least 13 years of age if accompanied by an adult).

March 31	Evening Classroom Session: Introduction to mountaineering
April 3	Evening Classroom Session: Rope and rock climbing basics
April 5 or 6	Field Session: Skinner Butte Columns
April 10	Evening Classroom Session: Glacier travel and self arrest techniques
April 12	Field Session: Location to be determined based on snow conditions

Visit obsidians.org for an application and contact climbs@obsidians.org for inquiries and registration.

At The Lodge



POTLUCK

Friday, February 28 6:30 PM

Trek to Mt. Everest Base Camp

DON'T MISS THE **FEBRUARY POTLUCK DINNER** on Friday, Feb. 28. The entertainment that evening will feature Buzz & Andrew Blumm—the subject, their trek to the Mount Everest Base Camp in March 2013. Their presentation will include a slide show, video clips and a general discussion of facts, figures and logistics.

February Potluck

Friday, February 28, 2014

Social hour 6 PM, Potluck 6:30 PM, Program 7:30 PM
Obsidian Lodge

*Bring your favorite potluck dish to share...along with plates,
utensils and cups...
plus \$1 to help cover club expenses.*



ExploraTalk

Tuesday, February 18, 7 PM

The Exciting Formation of Mountains

DR. JOSH ROERING, UO Professor of Geological Sciences, will tell a tale of catastrophic landslides, ancient lakes, and big floods through marvelous photos taken from a small plane flying over remote back country.

We will see videos of landslides and pictures of basic landforms with all the vegetation digitally scrubbed away. We will learn how mountainous landscapes evolve, the importance of tectonic activity, about soil glaciers that move

minutes per year, as well as landslides whose speeds are measured in meters per second.

Dr. Roering has been honored with the Ersted Award which “honors faculty members who have taught comparatively short periods but have demonstrated exceptional abilities to induce students to reason and not merely memorize.”

2014 ExploraTalk Schedule

A WIDE VARIETY OF PROGRAMS ARE PLANNED for this year's ExploraTalk series, from mountain geology to birds along I-5, to the connections between early Obsidians and early McKenzie River guides, to extraordinary mapping of areas we frequent.

January's program on weathering climate change provided timely information and suggestions on adapting to anticipated weather changes, by Tom Giesen and Tom Bowerman.

February 18. Dr. Josh Roering, professor of geological sciences at UO will present slides depicting the exciting formation of mountains, including catastrophic landslides, ancient lakes, and big floods.

March 18. Birding expert and author Harry G. Fuller will provide slides from his book *Freeway Birding, San Francisco to Seattle*, showcasing a fast and fun way to go

(Continued on page 13)

birding.

April 15. Past Sierra Club Director, Michael McCloskey will show slides from his historically and locally significant new book, *Conserving Oregon's Environment: Breakthroughs That Made History*.

May 27. With Tony Farque, award winning Regional Interpreter/Educator of the Year for the Willamette National Forest, we will follow the historic footsteps of the Kalapuya Indians along the lower floodplains of the South Santiam river.

June 17. We will take an armchair float down the McKenzie River with Dave Helfrich, grandson of pioneering river guide Prince Helfrich, and learn some possibly new stories about the connection between the river guides and our founding Obsidian forefathers.

July 15. David Imus's handcrafted map of the U.S won cartography's equivalent of the Academy Award for Best Picture at the Cartography and Geographic Information Society's competition. He will show us how he did it.

Associated activities include:

- March 22 SOLVE Spring beach cleanup
- March 23 Whale Watch out of Newport
- June 20 Hike led by Tony Farque to see examples of Kalapuya footsteps from his May talk
- Sept. (TBA) Watch Vaux's swifts fly down Condon's chimney
- Sept. (TBA) SOLVE Fall beach cleanup



Caples, Pam
 680 T Sreet
 Springfield, OR 97477
 554-2528
p.caples@comcast.net

Rundle, Tom
 50 Kourt Drive, #12
 Eugene, OR 97404
 915-4623
vivadancero@gmail.com

Obsidian Calendar

February

- 12 Wed **Spencer Butte** Hike **M** Jacobsen..... 343-8030
- 15 Sat **Berley Lakes** Xski **D** Sinnott.....915-0234
- 16 Sun **Booth Lake Loop** Xski **D** Miller.....484-4586
- 18 Tue **Mountain Geology** **ExploraTalk**
- 22 Sat **Spencer Butte** Trail Maint Bell 503-884-8829
- 23 Sun **Bus Rally at Lodge** **1 to 3 PM**
- 26 Wed **Dorris Ranch** Hike **E** Romoser.....726-8154
- 28 Fri **Everest Base Camp** **Potluck**

March

- 1 Sat **Fawn Lake** Xski **D** Sinnott.....915-0234
- 2 Sun **Cone Peak** Xski **D** Sayre345-2370
- 3 Mon **Mt. Baldy** Hike **M** Romoser.....726-8154
- 6 Thu **Tait's Loop** SShoe **D** Wilken343-3080
- 8 Sat **Booth Lake** Xski **D** Hamilton.....343-6550
- 9 Sun **Odell Lake Overlook** SShoe **M** Hovis.....731-3412
- 18 Tue **Monroe/Alpine/Finley** Bus Kocken.....736-5180
- 18 Tue **Freeway Birding** **ExploraTalk**
- Fri 28 **Hiking in England** **Potluck**
- 29 Sat **Spencer Butte** Trail Maint **M** Bell..... 503-884-8829

April

- 4 Fri **Crater Lake Ski/SS** Stockdale.....767-3668
- 6 Sun **Death Valley** Bus Beard994-2337
- 15 Tue **Conservng Oregon**..... **ExploraTalk**

Winter Trips Needs Hikes

WANT SUGGESTIONS? Here are some hikes that were led in years past. Most are listed in Bill Sullivan's hiking guides. If you have questions or want to submit a trip, contact wintertrips@obsidians.org. If your trip is after March 31, we'll forward it on to Summer Trips.

Go west to the coast range and coast: Chip Ross/ Dimple Hill, Cape Mountain, Cape Perpetua, Hobbit Trail/ Heceta Head, Finley Wildlife Refuge, McDonald Forest, Washburne-China Creek Loop, Gwynn Creek Loop, Tahkenitch Dunes Loop, Sweet Creek Falls and Beaver Creeks, Siltcoos River and Lagoon Trails or Baker Beach.

Go east to the foothills: Goodman Creek, Trestle Creek Falls, McKenzie River Trail (LTD bus)*, Row River Trail, Larison Rock*, Moon, Spirit and Pinard Falls*, Silver Falls, Castle Rock*, Fall Creek, Shotgun Creek and Horse Rock or Brice Creek (*check snow levels).

Go north: Portland's Aerial Tram and Council Crest, Willamette Mission Park or Columbia Gorge.

Stay in Eugene: Eugene Wetlands, Skinner Butte and River Path, Island Park to Autzen Bridge or more with EMX, Mt. Pisgah or Alton Baker Park and Talking Stones.

Submitted by Winter Trips Committee



OBSIDIANS, INC. OBSIDIANS, INC. IS A NON-PROFIT ORGANIZATION
P.O. BOX 51510
EUGENE, OR 97405

RETURN SERVICE REQUESTED

PRESORTED STANDARD
US POSTAGE
PAID
EUGENE, OR
PERMIT 803



February 2014



No longer the home of trip sign-ups, the Obsidian bulletin board at the Y is still a great way to keep up with Obsidian events.