

Inside This Issue

Celebrate	1
President's Message	2
Welcome	2
Summer Adventures & Chairs	3
Fresh Tracks	4
Conservation Corner	5
Where's the Trail	5
Board Notes	6
Half Dome	7
Trip Reports & Activities	8-12
Upcoming	13
At the Lodge	14
Lowest Tide	15
Nominating Committee	15
Classifieds	15
Calendar	15
Picture of the Month	16

Dates to Remember

Apr 23	Potluck - Zion Canyon
Apr 24	Trail Maintenance
Apr 29	Summer Trips Kickoff
May 2	Mural Open House
May 5	Board Meeting

Complete current schedules at:
www.obsidians.org or
 Register-Guard – Outdoors – Tuesday

Calling All Trip Leaders



**Summer Trips
 Kickoff Social &
 Leader Training**

See Page 14

Gala Open House:

Celebrate “The Obsidian Spirit”

Story and Photos by John Jacobsen, Chair, Lodge Grounds Committee



COMPLETION OF THE LONG ANTICIPATED CERAMIC RELIEF MURAL, recently titled “The Obsidian Spirit”, by noted artist and fellow longtime Obsidian Dallas Cole will be celebrated at a gala open house from 2-4 pm on Sunday, May 2nd. All Obsidians, their families, friends and the public are invited.

Dallas, who was Obsidians president in 1986, will be introduced at a formal presentation that will begin at 2:30 pm. She’ll share her thoughts on the mural, which portrays hikers (Obsidians, of course!) at a waterfall, and she will be available afterward for questions and discussion. The new artwork fits perfectly with Eugene’s official identification as “World’s Greatest City for the Arts and the Outdoors.”

Located on the retaining wall close to our memorial wall and front entrance door, the beautiful and distinctive new mural began with a half-ton of clay and Mt. St. Helens ash and involved two firings of more than 70 individual pieces. More than

(Continued on page 2)

DALLAS GENEROUSLY DONATED her artistry, professional skills, the time and the energy needed to design and create the many ceramic parts of the mural and then to supervise their installation. The cost of materials and installation were in the neighborhood of \$6,000, for which we have been encouraging donations from club members and others. Donations have reached about 75% of the cost, but **we still need more generous donors** who would like to help contribute this wonderful gift to the Obsidian art scene. To support this effort please contact John Jacobsen: (541)343-8030 or johnwjacobsen@comcast.net

The President's Message:

Pets – Revisited

WOW, WHAT A CONTRAST. I guess no one had any ideas to improve our volunteer organization... at least no one shared any with me. However, pets are a different matter. I received over a dozen 'thoughts'. Thank you.

Well, people were not interested in my alligator, my son's 13 foot snake, my daughter's cat, or my grandson's hamster. They were only concerned about DOGS. Dog owners were generally interested in getting together with other dog owners. However, most of the comments were reasons why dogs must NOT be allowed on Obsidian hikes.

Some of the comments were humorous . . . at least to me. I have a list of them. But most people are just afraid of dogs and their somewhat unpredictable nature. So I gather that the Obsidians will continue to be in line with other outdoor clubs by not allowing dogs (and presumably other pets) on outings.

Perhaps dog owners can compile a list of people who want to hike with other dog owners. Maybe dog owners can augment the list of limitations that they gave me for their own personal dog outings. Maybe dog owners could make their own list of hikes that are dog friendly. But it is up to you dog people to organize your own gatherings. In any case, thanks to all who shared in the discussion.

Jim Pierce, Obsidian Board President



Reinstated Members

GOINS, STEVEN (Active)
5345 Nectar Way, Eugene 97405
484-1018 stevengoins@comcast.net

RECHT, FRAN (Active)
PO Box 221, Depoe Bay, OR 97341
5765-2234 franrecht@centurytel.net

"The Obsidian Spirit"

(Continued from page 1)

two years in the making, the mural adds yet another unique feature to our historic lodge. The finished mural includes found stone and obsidian, laid out and installed along with the ceramic pieces, by Scott Wylie, artistic mason.

Other ceramic relief murals by Cole include one on the Community Conference Center facing the Hult Center; one at the Eugene Relief Nursery; and a series of bas-relief tree trunks created in association with Carolyn Orum at the Eugene Public Utility District offices off Seavey Loop. A resident now of Lake Oswego, Cole has also created a 35-foot brightly colored ceramic relief mural depicting classic literature on the wall of the children's patio of the Wilsonville Public Library.

Following the formal presentation there will be self-guided tours of the lodge's other works of art and historic photos, with some of the artists also available to discuss their works and members available to discuss the historic photographs.

In addition to being a social event for all Obsidians, this will be a wonderful opportunity for club members to greet public visitors, describe our organization's many activities and for trip leaders to sign up guests (and potential new members) for upcoming hikes.

Light refreshments will be available.



Dallas & one of the many, many ceramic pieces.

OBSIDIANS, INC

P.O. Box 322, Eugene, OR 97440
Website: www.obsidians.org

Board of Directors

Jim Pierce, President
Lana Lindstrom, Vice President
Kathy Hoeg, Secretary
Stewart Hoeg, Treasurer
Wayne Deeter, Lyn Gilman-Garrick,
Larry Huff, Verna Kocken, & Elle Weaver

Board meetings are held at 6 pm the first Wednesday of each month, except October when it is the Wednesday after the Annual Meeting, and no meeting in August.

Committee Chairpersons

Byways-By-Bus Liz Reanier
Climbs Larry Huff
Concessions.....Lyn Gilman-Garrick
Conservation/SciEd...Pat Bitner/Joella Ewing
Entertainment Laurie Funkhouser
Extended TripsJim Duncan
Finance Stewart Hoeg
Librarian/HistorianLenore McManigal
Lodge Building..... Doug Nelson
Lodge Grounds..... John Jacobsen
Membership Barb Revere
Online Wayne Deeter
Publications.....Joanne Ledet
Publicity.....Elle Weaver
Safety.....Jim Pierce
Summer Camp..... Lana Lindstrom
Summer Trips. Brian Hamilton/Scott Hovis
Trail Maintenance..... Matt Bell
Winter Trips.....Paul Flashenberg

The **OBSIDIAN** *Bulletin*

© 2010

Published monthly, except August and December. Articles, story ideas, letters to the editor and other editorial submissions may be emailed to:

bulletin@obsidians.org

Although email is preferred, submissions may also be sent to:

The Obsidian Bulletin

P.O. Box 51424, Eugene, OR 97405

For reprint rights, contact above.

Deadline

for May 2010 Bulletin
Saturday, May 1, 2010

Assembly/Mailing Team

For March Bulletin

Assembly & Mail Manager - Lou Maenz
Assembly Team - Don Baldwin, LaRee Beckley, John & Lenore McManigal, and Don & Barbara Payne

Editorial Team

Writing & Editorial Staff - Ethel Weltman, Bea Fontana, Ken Frazer, John Jacobsen, Joanne Ledet, Beth Roy
Copy Editors - Ethel Weltman & Beth Roy
Graphics, Design & Desktop Publishing - Stewart Hoeg & John Jacobsen

SUMMER ADVENTURES

By Brian Hamilton and Joanne Ledet

A VARIETY OF EXCITING TRIPS ARE PLANNED for this summer. Thanks to many volunteers who are willing to lead, the schedule currently includes over 100 trips that will appeal to all interests and abilities. While most are hikes, which range from easy to difficult, there are also biking trips, canoe/kayaking trips, backpacking trips and a birding expedition. For those who want to express their inner artistic abilities, there will be an artists retreat at the coast, led by Scott Hovis.

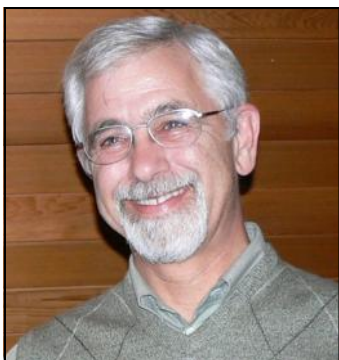
To make sure you don't miss out on any of these great trips, monitor the Obsidian web site for any trips that might get added at the last minute, or check the Outdoor section of The Register Guard. Keep in mind you can always add a trip during the summer when you find you have an opening in your schedule. Just email the trip you want to lead to summertrips@obsidians.org.

Join some great leaders, fellow Obsidian members and potential members for trips into our great outdoors. Re-hike familiar trails or venture into a new area which just might become one of your favorite hikes!

See you on the trail!



Meet the Committee Chairs:



Brian Hamilton, Summer Trips Co-Chair

AFTER JOINING THE OBSIDIANS IN 2004 Brian immediately became involved in club activities. He started as many of us do by going on trips, but quickly progressed to leading hikes and climbs. He has gone on a total of 69 trips, 25 of them being climbs. In 2009 he received his 10 peak award and also the 25 leader award. Brian has also been very involved in the workings of the club by serving on the summer trips and climb committees. He served as chair of the lodge building committee, and provided his expertise as an architect in the planning of the lodge remodel. He and his wife, Mary, attended their first summer camp in 2008, where Brian continued to lead and hike the many trails of the Sawtooths. Only five years after joining the Obsidians, he became president of the club.

Scott Hovis, Summer Trips Co-Chair

SCOTT JOINED THE OBSIDIANS IN 1994 and has since participated in 108 trips, leading 58 of them. A very impressive trip to leader ratio! After retiring as an art teacher from Cottage Grove High School, Scott chaired the Obsidian Youth Committee and led several youth trips. Scott has been very involved in organizing youth outdoor activities and helping young people experience and appreciate the great outdoors. He attended his first summer camp in 2008 in the Sawtooths, and enjoyed it so much he attended the next year's camp at Lassen National Park.



Part 2 - Fresh Tracks

By Rich Maris, Willamette Pass Ski Patrol

Editor's note: "Fresh Tracks" is the second and last part of a two part series. The first part, "Setting the Course," appeared in the March Bulletin.

FOLLOWING MY CLOSING LAST MONTH in an imagined plume of exploding snow from a fast carved skiing turn, I'll philosophically explore the evolution of skiing and winter outdoor recreation. Not the technical aspects of skiing or resort areas but in the sense of an outing, a journey, the period in the middle to be enjoyed before the eventual destination is reached. In our case, the destination is always ahead. The future of our outings and places to be explored and preserved may reside only in our memories. Try as we do to make it zero impact, we leave our tracks in one sense or another; whether on the ground or in recollections of the event to others; a decision to share and possibly overload the locale or keep it a personal secret, further untouched and protected beyond the telling.

For a real reading treat, and a look back at the experience, in the sense of travel and outings, I recommend *Escape on Skis*, by Brian Meredith, 1938. It can be downloaded for free at <http://www.archive.org/details/escapeonskis00meruoft>. Meredith, a Canadian journalist and skiing traveler, provides his unique experiences in ski ventures in Alberta, Canada in the first half, and Switzerland in the second. The book is filled with sixty-two evocative photographs of the ski camps and skiing in the late 1930s, before the war. Langlaufing, ski traveling with a 50 pound pack on your back, guessing which wax to use in your cross country venture into a remote ski camp or Swiss resort in an environment now long lost is the style of writing. No modern up-lifts therein, and only the unique funiculars found at Swiss resorts to transport you up for your down-sliding. Mainly skin up and stride forth across pass after pass from one ski shelter to the next.

NOW, BACK TO MY MISSION: the Obsidians and skiing around this part of the state in the sixties and later. The Obsidians, opting out of sponsoring ski racing, were the strong factor and support in the formation of Tri-Pass Ski Club for sanctioned ski races and development of ski racers. I believe that the Tri-Pass name must relate to the Santiam, McKenzie, and Willamette passes where skiing was given life and breath for future development.

With the stymied and slow improvements of lifts at Willamette Pass, cross country ski races were a regular offering, with courses laid out by Obsidians Borg (Bud) Nasholm, George Korn, Jack Meissner, and the Swedish racer Nils Norman. These competitions were open to all classes and included a National Cross-Country Championship at Willamette Pass in February, 1955 with both 11-mile and 18-mile courses that went around Waldo Lake. As lift systems were upgraded, these cross country events slowly passed away like melting snow. The sixties brought larger crowds, faster lifts, and more down-sliding.



Newer rope tows, Poma Lifts, and finally a chair lift in 1982 made alpine downhill skiing of both the recreational and competitive activity grow in demand and provision of services. The prior sense of being alone in the wilderness became a lost experience for most recreationists, preserved only for the few who truly appreciated getting away from the din and bustle of the crowds. Improvements in cross country skis with waxless bases, smaller snowshoes, and clothing with better weather protection opened the doors to the general public who demanded their right of access, whether they had the necessary experience or not; often to the dismay of search and rescue crews who were called out more and more often. The shared experiences and mentorship provided by Obsidians to their members, and then the members to their friends became more and more limited in terms of numbers of people venturing onto the slopes and into the mountains. The early Obsidian Search and Rescue Committee was aided by Eugene Mountain Rescue and later Search and Rescue Explorer Post 178.

WHILE DEDICATED OUTDOOR RECREATIONISTS have always paid strict attention to their equipment and its condition, the emerging trend to new and improved equipment and accessories provided a sense of false security to many recreationists who knew too little of the function, practiced too seldom for proficiency, and perhaps were led astray with ever-present sales promotions without the foundation of outdoor training and proficiency in recognizing the limitations of each item. In my perspective, many of us may have become gear and gadget oriented, while losing our personal touch with nature and the outdoors.

This has been a valuable activity for me to look back, recalling the early days when we were more dependent upon our awareness of nature and how we have to work respectfully with it; setting the newest equipment aside for a bit or putting it into perspective of how, decades ago, dedicated outdoor enthusiasts accomplished some amazing achievements with very simple provisions compared with what we take for granted as necessary today. Thank you for permitting me to regain this perspective, and access times and people previously lost from memory. I hope that you can gain similar satisfactions and new realizations as you think back and recall former Obsidians and outdoor enthusiasts. Can we parallel what they accomplished personally and in building the organization? Why not?

"Ski Heil"



Trail Fees, Camping Fees - Should We Pay More? Should We Pay At All?

By Pat Bitner, *Sci-Ed/Conservation Co-chair*

STRONG DIFFERENCES HAVE LONG EXISTED between those who feel that the portion of the populace who use the campgrounds, trails and other facilities in public lands should pay a share of their upkeep, and those who feel we are already paying taxes for what should be a universal right to enjoy our national and state parks and national forest lands.

The US Forest Service's recent proposal to cut discounts currently enjoyed by senior and disabled campers from 50% to 10% generated heat from all sides. At the behest of the private concession companies, which operate 82% of the reservable campsites in 4,731 campgrounds nationwide, the Forest Service announced its intention to cut the larger discount to 10% at privately managed campgrounds in national forests while keeping the 50% discount in government operated campgrounds, effective in 2011. Apparently, opposition led by the Idaho congressional delegation is responsible for the the scrapping of this increase. Forest Service Chief Tom Tidwell, in a press release reversing his former position, said, "Particularly in these difficult economic times, it is very important to maintain affordable access to our national forests and grasslands, giving people easy ways to recreate and find respite in the great outdoors". (*Salt Lake Tribune*, 3/19/2010)

WERE YOU AWARE THAT the friendly forest ranger we all knew no longer works at your favorite National Forest campground? More than four out of five reservable spots are privately managed, per the *Oregonian*, 12/03/2009. News to me,

but I think we all know that concessionaires operate the amenities in our National Parks. Their campaigns to offer more and more 'shopping opportunities' and more high end, high cost lodging and eateries to the Parks are ongoing. The official attitude seems to have been - privatize everything, including managing our most precious natural heritage.

Rep. Peter DeFazio has criticized the federal forest trail fees program and says it should be repealed. He contrasts the fee required for the privilege of hiking on a forest trail with the free ride mining companies are still allowed under the 1872 Mining Act. A Canadian company operating a gold mining operation in Nevada expects to remove about \$10 million of gold from the site. They paid \$9,765 for this golden giveaway.

Citizens are paying to enjoy our public beaches and National Forests. These fees are supposed to be returned where they were collected for needed improvements. We all know, improvements are badly needed. DeFazio says that so far 53% of fees collected by the Forest Service went to collection costs. These extremely unpopular fees will probably continue to extract very, very high collection costs. "The recreational fee program violates the principle that our national forests belong to the people of this nation and should be accessible to them. It is also fueling a deep resentment of our land management agencies and of Congress. It should be repealed". (Rep. Peter DeFazio)

Where's the Trail?

by Mari Baldwin and Pat Esch

SO HOW DO YOU GET FROM ONE END to the other on the new two-mile extension of the East Ridgeline Trail? After two months of weekly forays onto the new purchase, we succeeded in making our way from the western, Mt. Baldy end to the eastern, LCC end, while staying on city land. We followed mysterious flagging, deer paths, old logging roads, machine crunched trails and service roads in our quest. A trail there is not. Not yet.

This eastern extension purchased from the Arlie Company by the City of Eugene in 2008 will add two plus miles of trails to the present 12 miles, and 200 acres to the over 1000 already in the Ridgeline system. The city has a draft Master Plan, with goals for trails, recreation, maintenance, management and access. At present, finding one's way while staying on the city owned part (the rest is private or utility easements) is difficult without a map. The future trails are incomplete with fields of blackberries or poison oak in between. However, the Eugene Parks and Open Space is out there working



Photo by John Jacobsen

to change this to a pleasant hiking experience.

Editor's Note: For more information on the East Ridgeline Trail, refer to the June 2009 Bulletin article, "Even More Ridgeline Trail" by John Jacobsen, the Obsidian representative to the East Ridgeline Task Team, formed to provide input for the master plan.

BOARD NOTES

April 7, 2010

By Kathy Hoeg, Secretary

President Jim Pierce called meeting to order. Board: Lana Lindstrom, Wayne Deeter, Stewart Hoeg, Verna Kocken, Larry Huff, Elle Weaver, Lyn Gilman-Garrick, Kathy Hoeg. Also present: Barb Revere, Lenore McManigal, Pat Bitner, Jim Duncan, Laurie Funkhouser, Brian Hamilton, Matt Bell, John Jacobsen, Paul Flashenberg, Joella Ewing, Barb Bruns, Doug Nelson.

Treasurer's Report: Stewart Hoeg reviewed the Budget Report and the Balance Sheet. The Board approved bills.

COMMITTEE REPORTS

Summer Trips (Scott Hovis & Brian Hamilton): 4 trips completed. 81 trips on the schedule as of April 1. Committee meeting April 5 to discuss strategies for soliciting more leaders and trips.

Winter Trips (Paul Flashenberg): Last month there were 15 trips completed: 10 hikes, 3 x-country ski, 2 snowshoe. Participants were 101: members 83, non 18. Season totals: 50 trips: 27 hikes, 10 x-country ski, 12 snowshoe and 1 snowshoe/x-country ski. Season totals for participants 349: 279 members, 70 non.

Climbs (Larry Huff): Sue Sullivan is climb school coordinator this year and confirms 21 students. Wayne Deeter has been coordinating the climb schedule and we expect to have the schedule posted online to coincide with the posting of the *Obsidian Bulletin* this month.

Trail Maintenance (Matt Bell): Statistics March -- Participants: 11 - 7 members, 4 non. Volunteer Hours: 33. Year-to-date -- Outings on Spencer Butte: 3; Participants: 34 total; 17 members; 17 non; Unique Participants: 25 total; 11 members; 14 non; Total Hours: 125.

Extended Trips (Jim Duncan): Met on March 17 to discuss the schedule for the year and other issues. The committee agreed that sign-ups for extended trips will not be accepted until the trip description has been published in the on-line Bulletin. Thanks to Beth Kodama, assisted by Sharon Duncan, for leading a very successful outing to Crater Lake. 23 members and 4 nonmembers.

Conservation, Science & Education (Pat Bitner & Joella Ewing): 11 members attended the March ExploraTalk.

\$11 collected. H.J. Andrews experimental old growth forest trip had 7 members and \$7 was collected.

Publication (Joanne Ledet): Ethel Weltman and Ken Frazer have joined the Committee. The committee thanks Jean Coberly for her years of service.

Entertainment (Laurie Funkhouser): Rick Ahrens' Cuba presentation drew 69 attendees with \$65 collected. The amplifier did not function at the March potluck. Cost to repair was \$67.

Membership (Barb Revere): Membership April - 436 active, 25 associate, 3 honorary, 8 junior, 18 life - total 490.

Concessions (Lyn Gilman-Garrick): The Committee sold \$114 in merchandise at the March potluck. They met on April 5th to discuss inventory, ordering, note cards, and future potlucks and programs.

Online (Wayne Deeter): Not all committees are getting information to the Online Committee in a timely manner. Online signup design work is steadily progressing. The committee is working on trip templates for the new scheduling/signup system. The committee is soliciting help in writing these descriptions.

Finance (Stewart Hoeg): The Finance Committee met in March to schedule annual audits, discuss recommendations for allocating 2009 investment income, and review financial investments.

Lodge Building (Doug Nelson): The wall in the storage/broom closet has been repaired. Doug would like to remind everyone who uses the lodge to be sure to turn ALL wall heaters "off" when you leave the building.

Lodge Grounds (John Jacobsen): New committee member: Chris Shuraleff. The committee had several work parties during the last month. Took down two dead firs, two other firs and a small oak in our oak habitat restoration effort.

Safety (Jim Pierce): First aid kits are updated. The committee is planning a first aid class for late Spring and is reorganizing the Safety Manual.

OLD BUSINESS

Safety Deposit Box: Stewart Hoeg listed the contents of the box. Board approved motion to store in the Lodge safe.

Membership Ad Hoc Committee: Lana Lindstrom reported. The committee concluded that the most important factor

affecting membership is the number and type of activities we offer. The committee also believes that another strong influence on membership is the public's awareness that we are not just a group of older folks who hike, but that we offer a wide variety of activities. The Board approved committee's recommendations.

Fire Risk Assessment: John Jacobsen believes it is not in the club's interest to contact the state about their program.

NEW BUSINESS

Lodge Insurance: Barb Bruns reported the insurance policy has been renewed. There was a discussion about whether to continue the non-owned-auto insurance rider. It is optional coverage. This year, the insurance company has asked us to provide information about a few club members as a sample of our drivers. The Board approved continuing the rider and providing information about the 6 members who have volunteered to be named.

Nominating Committee: Board selected Barb Revere, Laurie Funkhouser, Jan Jacobsen, Jim Pierce and Jim Duncan.

Finance Committee Allocations: The committee proposed allocation of 2009 equity fund dividends of \$405.25 to the Endowment Fund; allocation of 2009 interest income of \$2,126.91 to the Capital/Contingency Fund and investing \$10,000 in a CD not to exceed 18 months. The Board approved these recommendations.

Input on Ribbon Trail: The Board approved the letter written by Jim Pierce to Neil Björklund.

Entry Improvements: Approved Grounds Committees proposal for a capital project, using a maximum of \$1,370 from the Capital & Contingency Fund, to purchase a new entrance sign, rewire and install sign lighting, purchase basalt rock for landscaping, and rent equipment.

Repairs to the Concrete Floor: Approved Lodge Committees proposal for a capital project, using a maximum of \$500 from the Capital & Contingency Fund, to repair the concrete floor of the Lodge

Women-Only Trips: Lana Lindstrom asked if it was permissible to schedule women-only trips. Several people said that it had been done in the past. There was also agreement that men-only trips would be fine.

To the Top of Yosemite's Half Dome

Story and Photo by Ken Frazer

HALF DOME (16.4 MILES, 4800') is Yosemite National Park's signature day hike and with good reason. You start on the famed John Muir Trail, hike through scenic High Sierra backcountry including past two of Yosemite's picturesque waterfalls, and finish at the summit of the Park's most recognizable peak by climbing the last 400 feet aided by a set of cables.

For a decade, I had been vowing to hike to the summit of Half Dome 'next year'. Now on a cool crisp morning in September 2009, my wife Mary and I found ourselves at the Happy Isles trailhead at 4:50 am.

We were alone as we made our way up the John Muir Trail. The first part of this trail up to popular viewpoints of the waterfalls is paved, but steep. After 0.9 miles, we reached a junction where hikers going to Half Dome can take the Mist Trail (1.6 miles) or continue on the John Muir Trail (2.7 miles) to where they converge near Nevada Falls 1500' higher. We decided to take the Mist Trail.

Up we went, climbing seemingly endless rock stairs as if on a giant Stairmaster. As we approached Vernal Falls, we could hear water crashing on rocks, but it was still too dark to see the 317 foot waterfall we would view on our return that afternoon.

DAWN WAS BREAKING as we approached Nevada Falls and a large black object appeared around a bend in the trail up ahead. It was a black bear walking straight towards us! There were no good options to avoid each other on this narrow section of the trail and the bear kept slowly walking towards us. By this time, I had my bear spray out with the locking mechanism disengaged. When the bear was about 30 feet from us, he scrambled down a steep bank and disappeared.

We left the steep Mist Trail behind and rejoined the John Muir Trail above Nevada Falls. We were enjoying the level hiking along the tranquil Merced River as well as the view of the back side of Half Dome in the morning light. Two and a half miles after rejoining the John Muir Trail, we left it again to take the Half Dome Trail. We climbed steadily through

the forest for about a mile and a half where the trees thinned to reveal a stunning profile of Half Dome and the subdome.

The subdome looked too steep for a trail until we got closer and saw the series of switchbacks. We found portions of the trail narrow and precarious. I don't know if it was the terrain, elevation, or a combination of factors, but hiking up the subdome was the first time we felt taxed. Once on top of the subdome, we got our first good look at the cables going up the side of Half Dome.



We brought gloves with rubberized palms to get a better grip on the cables as we made our way up. We were climbing at an angle of 45 degrees, but it might as well have been 60. The surface of the rock was so slick from the thousands of people going up every year that our feet provided little traction. We quickly found that going up the cables wasn't so much hiking or climbing as it was hauling ourselves up with our arms and using our legs to stabilize ourselves once we got to the wooden planks spanning the posts that held the cables.

WE GOT TO THE TOP OF THE CABLES and walked the remaining gentle slope unaided to the summit. It was 9:20 am. We congratulated each other and ate an early lunch. After lunch we got as close to the edge of the face as we dared and had our picture taken by a couple from Minnesota. We spent the next hour exploring

the expansive top of Half Dome and taking pictures in all directions. The views were incredible . . . why had I put this off for so long?

IF YOU WANT TO GO:

Don't wait as long as we did! In 2010 and 2011 the Park Service is instituting a permit system for Fridays, Saturdays, Sundays, and federal holidays. The Park will issue 400 permits per day (300 for day hikers, 100 issued with wilderness permits). Unless you have a permit, you will not be allowed past the base of the subdome. In addition, the National Park Service is conducting an environmental assessment and creating a long-term plan for the Half Dome cables to be implemented in 2012. For more information: <http://www.nps.gov/yose/planyourvisit/hdpermits.htm>

TRIP REPORTS & OTHER ACTIVITIES



Hikes

Kalapuya Talking Stones

February 28, 2010

Leaders: Rick Ahrens & Janet Jacobsen

4 miles, 0 ft. (Easy)

OUR THREE-HOUR WALK in the Whilamut Natural Area of Alton Baker Park with Rick Ahrens and David Sonnichsen opened our minds to the historical connections of the Talking Stones with the Kalapuya Indians. Interspersed with the stories about the Kalapuya Indians, Rick identified birds, plants and much more. David, chair of the Government Relationship Subcommittee of Citizens Planning Committee for the Whilamut Natural area, told how the stones and names were selected. There are fifteen talking stones placed at significant landscapes in the Whilamut Natural Area. We discovered the three new stones installed last October: *CAMAFEEMA*: ferns on the ground, *DUUCU-BA*: powerful place, *HAL-BA*: downstream. David also showed us the Talking Stone [*GUDU-KUT*: frog] standing in the city maintenance yard waiting to be placed by a pond near the Knickerbocker Bridge after the I-5 Bridge project is completed. Our thanks to Rick and David whose fountain of knowledge shaped our walk into the past. Members: Rick Ahrens, Andrew Britis, Walt Dolliver, Julie Dorland, Pat Esch, Janet Jacobsen, Colleen Milliman, Greg Milliman, Margaret Prentice, Virginia Prouty, Sally Quigley and Ken Rivernider. Nonmembers: Jackie Chama, David Sonnichsen, Jan Wulling, Glenda Yates and Darlene York.

Alton Baker Park/Pre's Trail

March 6, 2010

Leader: Margaret Prentice

4 miles, 0 ft. (Easy)

THE PARKING LOT AT ALTON BAKER was swarming with people and finding a parking spot was a challenge especially when the participants for the Fanconia Run gathered and blocked the entrance. Fortunately, with Walt's assistance, everyone found the gathering point and at 9:10 we left the congestion behind and were on our way along Pre's Trail. The sun was out and we were blessed with glorious weather. There were many signs of an early spring: blossoms, green leaves, bird sounds. Fresh from the previous Sunday's walk some of us shared information on the Kalapuya Talking Stones that we passed. We digressed from Pre's Trail, just beyond the pond, to the bike path so we could enjoy the river before returning to Pre's Trail and walking along the canal. By the time we reached the heron rookery just beyond the children's museum, we'd seen an osprey, cormorants, many geese of course, ducks, a hummingbird and vultures. The highlight however was looking up at the rookery where all four nests were occupied and being able to watch one heron feeding a hun-

gry baby. Our morning ended with a walk through Hay's Tree Garden where several trees were in bloom. My thanks to the great group of Obsidians who accompanied me: Myron Cook, Walt Dolliver, Bob Jones, Marshall Kandell, Sandra Larsen, Virginia Prouty, Ken Rivernider, Ginny Reich and Suzanne Steussy.

Trestle Creek Falls

March 9, 2010

Leader & Photo: Jim Pierce

4 miles, 1,000 ft. (Moderate)



THE FORECAST WAS FOR 100% CHANCE OF RAIN. We wore rain gear, so it didn't rain; a little snow fell, but not much. The trail was muddy, but we had boots! The Falls were awesome, the forest, mosses and ferns lush, and the sun even sparkled as we ate lunch by the tranquilizing Brice Creek. Hikers were non-member Karen Wildish (first outing), members Joella Ewing, Tom Musselwhite and leader Jim Pierce.

Ridgeline Trail (via Bus #73)

March 12, 2010

Leader: Janet Jacobsen

5.5 miles, 600 ft. (Easy)

HEAVY RAIN DID NOT STOP THE FOUR OF US from taking Bus #73 to 46th and Willamette where we walked uphill .8 mile to the 52nd Ridgeline trailhead. From there we followed the Ridgeline Trail to Fox Hollow and down the muddy Amazon Headwaters Trail. We were right on time for bus #25 but we opted to walk on the Amazon chip trail to Hideaway Bakery for lunch. The challenge on our hike was trying not to step on the hundreds of earthworms crossing the trail. At first, Janet Hall picked up the worms and carried them across for safety. She told us that she was following in Albert Einstein's footsteps, as he was one who also ferried earthworms. She shared interesting earthworm

facts, including that earthworms are seen after large rainstorms because the soil becomes too moist for them to survive. When we weren't watching out for earthworms, we noticed the trilliums and fawn lilies just beginning to bloom and the abundant flowing water of the Amazon. Members: Pat Esch, Janet Hall, Cathy Irwin and Janet Jacobsen.

Hills of Southwest Eugene

March 13, 2010

Leader: Joanne Ledet

4.5 miles, 400 ft. (Easy)

AFTER SEVERAL DAYS OF STEADY RAIN, we caught a break and did not have a drop of rain on us this day. The temperature was cool and the wind brisk, however, so we set a steady pace from Churchill Plaza into the wooded area. Once in the trees and out of the wind, we warmed up and enjoyed the scenery, the sightings of deer and a flock of very vocal wild turkey. I deviated somewhat from the route taken when I have led this hike in the past, as we ventured off into the Rainwild Prairie, owned by BPA. We enjoyed the views into a valley, the Coast Range, Fern Ridge and the former Hynix Plant. We came back to the creek and followed it as it tumbled down towards Wilshire Street. Back on city streets, we walked down Brittany, cutting through the playground at McCornack School, and back to our cars. Enjoying a hike of 4½ miles were members Daniele Delaby, Janet Hall, Yuan Hopkins, Ken Rivernider, Barbara Schomaker, Pat Soussan and leader Joanne Ledet.

Skinner Butte Eagle Walk

March 16, 2010

Leader: Margaret Essenberg

1 mile, 200 ft. (Easy)

ON A COLD DAY, thankful that predicted rain was not falling, we walked up the north side of Skinner Butte. A winter wren was singing and the woods were full of both local species of trillium in bloom. Dave Predeek answered questions about native flora. Near the summit, one of the members felt very unwell, so another member returned to her car and drove it to the summit. The ill member by then was feeling better, but accepted a ride so that she could return home. From the east end of the summit, North and Middle Sister were clearly seen. The remaining group took the paved summit walk to the two points from which the bald eagles' nest can be seen. An adult eagle was sitting there incubating this year's clutch. We took the path that descends the west face of the butte near the basalt columns and returned to our starting point. Members: Daniele Delaby, Margaret Essenberg, Richard Essenberg, Joanne Ledet, Dave Predeek, Margaret Prentice, Virginia Prouty, Ginny Reich and Barbara Schomaker; non-member: Lauren Brugere.

HJ Andrews/Lookout Creek Trail

March 19, 2010

Leader: Tom Musselwhite

7 miles, 1,100 ft. (Moderate)

WHETHER ATTRACTED BY THE ESTHETICS OF ANCIENT FORESTS, or to better understand the concepts of carbon storage and sequestration, the 16,000 acre "Andrews" is a place where scientists and visitors from all over the world come to study forests. The day began a crisp 32 degrees, clear and bright as our party

of seven Obsidians set out from Amazon Park to rendezvous at the forest headquarters. Our Conservation Trip task for the day: To learn more about carbon storage in old growth forests, and of course have some fun, get some air in the old lungs, see some big trees, and enjoy a day in the old forest with fellow Obsidians. The Lookout Creek Old Growth Trail makes for an excellent hike through a world of giant 400 to 500-year-old Douglas fir, hemlock, and cedar. This time of year yew and rhododendron stand out amidst the barren limbs of the deciduous species still on winters' hold. A patch of devil's club and eight stream crossings keep hikers on their toes. The trail is mostly well-defined but narrow with several large logs to climb over. We met up at the HQ and found site manager Cathy Keable and Forest Director Mark Schulze ready for class. We learned about long-term studies of spotted owls, log decomposition, stream sediment flows, and logging practices. One of the unusual uses of the site is Long Term Ecological Reflections, a creative writers' collaboration intended to continue for 200 years, in which participants reflect upon the many parts of the forest through poems, essays, and other literature. After our tour, we drove the seven miles to the lower trailhead of the Lookout Creek Old Growth Trail on FS road 1506. We started there and hiked the 3.5 miles to the upper trailhead in just under 3 hours with a 20-minute break for lunch. The weather was uncommonly fantastic for mid-March . . . cool, clear and crisp. The three-mile jaunt back down gravel road 1506 was a breeze, and we covered the distance in less than one hour. All agreed it was a great day to be in the forest and a fun trip. Members: Keiko Bryan, Dan Christensen, Sam Miller, Tom Musselwhite, Susan Sanazaro, Chris Stockdale and Charlie Thomas.



Chris & an HJ Andrews giant

Goodman Creek

March 20, 2010

Leader: Paul Flashenberg

6 miles, 600 ft. (Moderate)

ON A BEAUTIFUL, SUNNY MORNING, eight of us left Eugene for a short half-hour drive to the trailhead on Highway 58. It was a bit cool as we started hiking, and observed that the trail sign for

the turnoff to Goodman Creek Trail is missing. The group naturally split into two distinct parts, the hikers, who wanted to get some exercise, and the nature walkers who wanted to admire the flora and take some pictures. We stopped for lunch at the turnaround point, a creek crossing, where the group again divided into the sun worshipers and the shade seekers. By this time the temperature had risen to a very comfortable level. We stopped at a small waterfall on the way back and then returned to our cars. Some of us stopped at the Dairy Queen for treats before driving back to Eugene. Thanks to Pat Esch for driving and sweeping. Members: Pat Esch, Paul Flashenberg, Tom Musselwhite, Sarah Praskievicz, Susan Sanazaro, Suzanne Steussy and Nancy Whitfield; nonmember: Diana Masario.

Young's Rock

March 27, 2010

Leader: Chuck Wagar

8.2 miles, 2,500 ft. (Difficult)

IT RAINED TUESDAY THROUGH FRIDAY before the hike, but the sun shone in force the day of the hike. The next day it started raining again; there *is* a hiking God. Five black-tailed deer were spotted, plus lots of various scat. The lower trail was muddy in spots, but the middle trail was clear. Snow was on the upper trail to about a depth of six inches at Young's Rock. Danni, a friend of Lainey, is helping her get in shape to climb Middle Sister this summer; today's trip was the most elevation gain ever for Lainey, who did very well. All of us exerted good energy, for, if I may so, a superb outing. Nonmember Lainey Cornell joined members Sue Meyers, Danni Harris and Chuck Wagar.



Snowshoe Trips

Maxwell Shelter

February 7, 2010

Leader: Daphne James

5.5 miles, 600 ft. (Moderate)

WE LEFT EUGENE ON A FOGGY SUNDAY MORNING. It has been a warm winter and it was a little disconcerting driving past Clear Lake and not seeing any snow on the ground. Maxwell Butte Sno-Park is at 3600 feet elevation and although there was enough packed snow on the trail for snowshoeing, we did find patches of bare ground in several sections. We took the most direct route up 600 feet to the shelter, a large structure with accommodations for overnight campers. It was beautiful on the butte, with the sun breaking through in spots, but not clear enough for the great views of the Cascades that Maxwell Butte is noted for. Everyone was in good spirits and we had made good time, so we all decided to take a loop trail back. As the afternoon passed, the sun emerged from the clouds. Joining the hike were members Keiko Bryan, Paul Flashenberg, Daphne James, Diane Pergamit, Suzanne Steussy and nonmember Fran Rosenthal.

Gold Lake

February 20, 2010

Leader: Charles Durham

6 miles, 450 ft. (Moderate)



WE MET AT 7:45 AM, made introductions, collected fees, and were on our way by 8 am. We arrived at Gold Lake Sno-Park and Patrol Cabin at 10 am and checked in with the volunteer. He said it was a perfect day for snowshoeing, not a lot of people out and no cross-country skiers, as it was too icy. We crossed Highway 58 which is a very dangerous crossing to the Gold Lake Shelter trail. We shoed up and reached the shelter in less than one hour. Five guys had set up camp at the shelter the night before. They were friendly, had a fire blazing, but it was a bit smelly and crowded inside. We cleared snow off a bench outside, ate lunch, took pictures and enjoyed the sun, birds, and great conversation. Before starting back, I slipped at the door of the potty, causing a small cut on my pinky finger. In an instant each person in the group whipped out their seldom used first aid kit and came to my aid. Fortunately, we had our own resident ER nurse who was able to patch me up in no time. Good to know so many first aid kits were available! We returned via upper and lower Marilyn Lakes - what a sight. The sun was bright and the lake frozen with a thin coat of snow on top, just beautiful. I could imagine a cable drawn across the lake to hold on to, snowshoes that convert to ice skates, then just scooting across (hmmm: snowshoes that convert to ice skates - what an idea). After a brief rest, and more pictures taken, we started back, which was uphill all the way and the hardest part of the trip. In about an hour we were at our cars, did a head count and returned home. We stopped in Oakridge for some comfort food (hamburger, fries, onion rings) and arrived safely in Eugene, and checked off another **WONDERFUL DATE WITH NATURE**. Members: Charles Durham, leader, and Dralyn Van Ness; nonmembers: Jason Toluba, Sarah Walden, Ron Tinsley, Janice Suratt.



Ski Trips

Fuji Mountain

March 7, 2010

Leader: Chrissy Anderson Photo: Randy Sinnott

14 miles, 2,700 ft. (Difficult)

THE ORIGINAL TRIP PLAN was to do a loop to Fuji Shelter, but we decided to climb Fuji Mountain instead. Snow conditions were not great (slushy/icy/face-planty), but we had such

low expectations given the recent weather that it seemed pretty good. At least we could climb without too much slipping. As usual, the snow improved as we climbed, and it was a beautiful sunny day. We parked at Waldo Lake Sno-Park and climbed two miles to the Fuji Mountain Trail. Then we climbed to Verde Lake where we had lunch. We reached the summit 4.5 hours after we started, just as the weather was changing (snow on the way, finally!!), making for some great views and pictures. The downhill was fast and fun. Thanks to this energetic and fit group of skiers, all cheerfully willing to add several miles plus 1,400 feet to the trip at the last minute. Skiers were members Dave Jensen, Harold Thompson, Randy Sinnott, leader Chrissy Anderson, and nonmember John Hartman.



Dave & Chrissy on Fuji

Island Lakes Loop
March 14, 2010
Leader: Dave Jensen
12.6 miles, 1,400 ft. (Difficult)

WE LEFT GOLD LAKE SNO-PARK on a clear Sunday morning and had a fast ski past the lake and up the connector trail to Waldo Road. Several cold storms during the past week had completely covered the sheets of ice and bare ground that were found over much of this area a week ago. It was a great day to be out, and the new snow made for good skiing. We climbed up the Fuji Mountain Trail, breaking trail in what started out to be 3-4" of new snow, but was about a foot deep by the time we got to Birthday Lake. The warm weather also made for heavy snow, so the pace wasn't too fast. Fortunately there were four of us to share the trail breaking. After a lunch break at Birthday Lake, we continued past Verde Lake and to the Island Lakes Trail. From there, we skied north past Island Lakes, and out to a viewpoint overlooking Ray Creek canyon, where we enjoyed nice views of Waldo Lake, the Three Sisters, Maiden Peak and points between and beyond. From there, we skied down into the Ray Creek drainage. This is a fairly steep descent, and usually requires traversing down the first part, but the snow was so deep, we were able to ski straight down. It was a fun run, well worth the effort

to get to the top. We continued down the Mt. Ray Trail to Waldo Road, then skied the road back to Gold Lake and out to the Sno-Park. It was a long day, and the deep, wet snow required substantial effort to ski through, but we all enjoyed ourselves, and had a wonderful day on the snow. Participants included Obsidians Chrissy Anderson and Dave Jensen (leader) and nonmembers Paul Murtaugh and Fritzi Grevstad.

Maiden Peak
March 28, 2010
Leader Chrissy Anderson Photo: Dave Jensen
15 miles, 3,000 ft. (Difficult)

IT WAS RAINING AT THE PASS, but that didn't stop some of us from applying sunscreen. Unfortunately, it was definitely not needed. It was not a day of leisurely breaks and lingering lunches. It was a cold, wet, keep-moving kind of day. But we had a great time anyway. We headed up the Maiden Peak Trail from Gold Lake Road, and 4.5 hours later we were on top, enjoying the views in our imagination. We descended by the same route, executing elegant turns and graceful falls. Many thanks to this fun, cheerful group. I can't imagine a better way to spend a day. Skiers were nonmember John Hartman, members Dave Jensen, Harold Thompson, Sam Miller, and leader Chrissy Anderson.



Whiteout - Sam, Harold, John, Chrissy & Dave



Trail Maintenance

Spencer Butte
February 27, 2010
Leader: Matthew Bell
3 miles, 500 ft. (Moderate)

WE MET UP AT THE MAIN SPENCER BUTTE PARKING LOT on Willamette at 9 am on a very brisk morning: present were a large group of members (six), nonmembers (seven), and two city staffers. We took a little longer getting prepared as we were treated to a very engaging demonstration by Christer LaBrecque on using propane torches to burn shining geranium, a non-native invasive species. Next, he outlined the main project for the day: graveling the work we did last month and improving additional trail below treeline on the main trail. Shortly thereaf-

ter we all started up the trail carrying tools, driving power-wheelbarrows, and carrying peeler-cores for shoring up the trail. After dropping off what they'd packed up the trail, Mary, Pat, and Marti hiked back to the parking lot to begin burning shining geranium. While Dylan was getting ready to also help burn the invasives, three high school-age boys walked by and were heard to exclaim "Whoa, those ladies have flame-throwers!" Probably the most envious comment ever from a passerby. Because of its germination cycle, shining geranium needs to be burned back three times per year. So, there will be a couple of future opportunities to use the torches for those who are interested. In the mean time Ed, Alex, Christer, Joe, Dalen, and Matt Yeager worked to widen, clear, and reinforce the trail with peeler-core retaining walls and dead-men. Jim, Brian, Alex, and Chelsea worked to provide a continuous supply of gravel. It was a beautifully clear day with the sun shining and a lot of really important work was accomplished on the butte. We continued to make progress shoring up and preparing the trail so that work can eventually happen on the summit to delineate a trail and rehabilitate native vegetation. Participants: leader Matthew Bell, Jim Pierce, Pat Soussan, Mary Hamilton, Brian Hamilton, and Ed Lizewski (members); Matt Yeager, Chelsea Gibbons, Dylan Corran, Marti Gerdes, Alex Lockfield, Joe Simons, and Dalen Willhite (nonmembers).

Spencer Butte
March 27, 2010
Leader: Matthew Bell
3 miles, 500 ft. (Moderate)

ELEVEN VOLUNTEERS MET AT THE MAIN SPENCER BUTTE PARKING LOT and were greeted by a new warning sign noting the sighting of a cougar in the park on March 17th. We broke into three small groups that would focus on several tasks. Tom, Dan, and Matt tackled cementing in three posts in the sections of

fencing we installed over the summer on the west trail. Brent, Dave and John used propane torches to burn more shining geranium around the parking lot. While Rick, Ed, Janet, Joanne and Alex continued to work on the main trail just below treeline, Ed expertly used 'fulcrums' to remove rocks from the trail. The others brought up and spread loads of gravel where we'd previously worked to reinforce the trail. Participants: Ed Lizewski, Joanne Ledet, Dan Christensen, Dave Predeck, Tom O'Brien, Brent Schultz, Matthew Bell, and John and Janet Jacobsen (members); Alex Lockfield and Rick McMonagle (nonmembers).



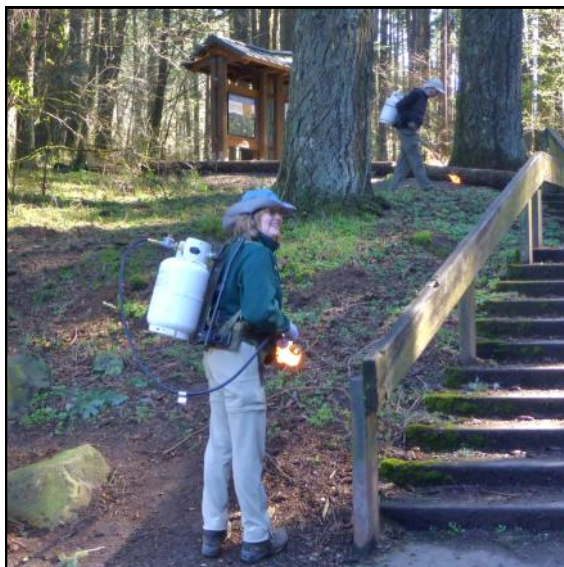
Byways By Bus

Roseburg Christmas Lights
December 8, 2009
Leader: Verna Kocken

VERNA KOCKEN was leader of the Christmas Lights trip, with Liz Reanier assisting. Twenty-four of us left Shopko at 4 pm, driving I-5 to Roseburg to have dinner at Applebee's restaurant. Afterward, we took a tour of the festive lights. A civic group sponsors the big drive-through, with all the theme settings decked out with lights, sound, and animation. There are more every year. After the lights tour, we drove through some residential areas to view lights, then back on I-5 to Eugene. It was a fun way to end our bus trip season. Members: Ethel Allen, Alice Anderson, Bill Arthur, Barbara Beard, Paul Beard, Paula Beard, Marcia Claypool, Sharon Cutsforth, RoseMary Etter, Barbara Flanders, Dennis Flanders, Dora Harris, Ray Jensen, Verna Kocken, John McManigal, Lenore McManigal, Barbara Payne, Don Payne, Liz Reanier, Dick Speelman and Janet Speelman. Nonmembers: Earline Kopriva, Lore Lambert and Edith Potter.

Obsidian Fire Bugs

The February 27th Spencer Butte Trail Maintenance work party brought out the fire bug in Mary Hamilton (below) and Pat Soussan (right) as they attack the invasive shining geranium with flame-throwers near the Spencer Butte main parking lot.



Photos by Matt Bell

UPCOMING

Extended Trips:

Umpqua River Rafting

Friday, June 25 – Sunday, June 27

THE NORTH UMPQUA RIVER is one of the most beautiful and exciting rivers for rafting in the Pacific Northwest. It's a 'busy' river with many Class II and several Class III rapids, including Boulder Drop, Cardiac Arrest and Pinball Rapids. Please join leaders Jim and Sharon Duncan on an extended trip on this beautiful river on June 25 – 27. This will be the third Obsidian rafting trip on the Umpqua; the previous trips have been great fun.

As usual, Ouzel Outfitters will provide the rafts and all rafting gear (including helmets), as well as guides, and a generous buffet lunch for our one-day trip. The experienced Ouzel guides emphasize safety while making sure that our day on the river is fun and exciting. No previous rafting experience is necessary for this trip – if you haven't rafted on whitewater before, this is a great way to start!

We will camp Friday and Saturday nights at the Steamboat Ball Field Group Campground. For those arriving early in the afternoon on Friday, there would be time for a hike along the river. Sunday morning could be used for hiking or viewing some of the beautiful waterfalls on the Umpqua.

Dinners for Friday and Saturday evenings are included in the price and will be group efforts. Participants will be responsible for their own breakfasts on Saturday and Sunday. Lunch on Saturday (our day on the river) will be provided; lunch on Friday and Sunday is on your own.

The cost for this trip is \$145 for members; nonmembers, \$150 and is limited to 18 people. We need a minimum of 12 to maintain this price. To reserve your place, send a non-refundable check for \$10.00 (payable to Obsidians) to Jim Duncan, 1878 W. 27th Place, Eugene, OR 97405. The balance is due by May 20. For more information call Jim or Sharon at 541-343-8079 or email: jameslduncan@prodigy.net.



Extended Trips Sign-up Policy

Extended Trip sign-ups will be accepted only after the trip description has been published in the on-line version of the *Obsidian Bulletin*.

Exploring Oregon Bus Trips

Discover Newberg, Past, Present and Future

Date: Tuesday, April 20

Leaders: Verna Kocken, Ray Jensen

Cost: \$46 Members, \$48 nonmembers

Reservations & Checks to:

Janet Speelman 541-344-3019

TO DISCOVER NEWBURG'S PAST, we will be visiting George Fox University and learning about the founders of this city and this school. We will visit the charming Minthorn House, built in 1881 by Jesse Edwards, the Quaker founder of Newberg. This home was purchased in 1885 by Dr. Henry Minthorn, uncle and foster father of Herbert Hoover. Hoover was a fascinating man and his story comes alive in this setting. We will visit ADec, a major manufacturer of dental equipment and have a tour of their facility, and then we will tour the Allison, a newly completed resort and spa, built by the family that owns ADec. We will depart from Shopko on Coburg Road at 8:00 am and return by 5:00 pm.

The Gorge, Hood River and Mt. Hood

Dates: Tuesday, May 11 - Wednesday, May 12

Leaders: Barbara and Paul Beard

Cost: \$181 members, \$185 nonmembers

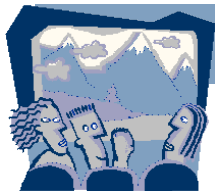
Reservations and checks to:

Mary Lee Cheadle 541-689-1085

LEAVING SHOPKO PARKING LOT AT 8:00 AM to tour Bonneville Dam and its salmon ladders, fish ponds and rhodie covered grounds. We will have our sack lunch here. In the afternoon, we will be at the WAAAM - Western Antique Aeroplane and Automobile Museum - with a brief visit through some of the beautiful apple orchards in the area. We will stay overnight at Hood River at a spectacular motel located on the Columbia River. Dinner is on your own.

Wednesday morning will find us boarding the Mt. Hood Railroad for a trip by rail to Parkdale (lunch included). The route home will take us to Sandy, Estacada, Molalla, Silverton and home by approximately 6:00 pm.

AT THE LODGE



POTLUCK

Friday, April 23:

Zion: Mystery Canyon

EXPLORE MYSTERY CANYON with members Steven McManigal and Steven Johnson in the comfort of the Lodge. This pair of adventurers spent two weeks in Zion National Park climbing canyon walls and plunging to watery depths of Mystery Canyon. Access to Mystery Canyon is by permit only and assigned by lottery. The teaser photographs are fantastic!

Laurie Funkhouser, Entertainment Chair



**April Potluck - Friday, April 23 - Obsidian Lodge
Potluck, 6:30 pm Program, 7:30 pm**

Bring your favorite potluck dish to share... along with plates, utensils and cups... plus \$1 to help cover club expenses.

Summer Trips Kickoff Social & Leader Training

- Want to learn how to select a destination and lead a trip?
- Need a refresher on how to complete and submit trip reports?
- Care to socialize with other Obsidians and possibly win door prizes?

Thursday, April 29th at 7:00 pm at the Lodge

Mark your calendar now!

THE SUMMER TRIPS Kickoff/Social and Leader Training is a fabulous opportunity you won't want to miss! You'll hear presentations from our in-house experts as well as two special guest speakers: Bill Sullivan and a representative from Backcountry Gear.

There will have display tables, refreshments and door prizes. Your participation will make this evening complete! See you there.

Brian Hamilton & Scott Hovis
Summer Trips Co-chairs



Thousands of Swifts



VAUX'S SWIFTS DESCEND at dusk into the Condon School chimney on Agate near 17th from about April 15 through about May 15 each year. The swirling process takes about 30 minutes either side of sunset, which is about 7:45 pm at *Bulletin* deadline, April 2. Make yourself comfortable with a lawn chair and a hot thermos on the paved school ground. Resource people from the Audubon Society will be at the viewing area Friday, April 16 and 23 with telescopes and information to answer questions. For an amazing four minute movie, "Thousands of Vaux's Swifts Roost in Eugene" (complete with music), follow this link: <http://www.youtube.com/watch?v=1TT07lAdNaM>

Joella Ewing, SciEd/Conservation Co-chair

Catch the Low Tide

ON MONDAY, July 12, 2010, there will be a low tide of minus 2.6 feet. A beach walk at Roads End in Lincoln City will begin at 6:15am from the Roads End State Park at the north end of Lincoln City. The beach walk around the point and to the caves is about 1.5 miles. Magnificent species of sea life can be viewed during these minus tides. Bring your camera and hiking boots for an early morning walk along the beach. Brunch will be served at the Roads End State Park after the walk. The hike will be limited to 25 hikers. Send \$3 (members) or \$5 (non) to Barbara Beard, 1631 NE 11th, Lincoln City, OR 97367. If you need overnight accommodations and would like to stay at the Inn at Spanish Head, call Barbara 541-994-2337. Reservations and trip fees due June 30.



Barbara Beard, Trip Leader

Nominating Committee

AT THE APRIL BOARD MEETING, Jim Duncan, Laurie Funkhouser, Janet Jacobsen, Jim Pierce, and Barb Revere were approved to be on the 2010 nominating committee. They will meet to select three candidates for election for three-year terms to the Obsidian Board of Directors beginning January 2011. The board nominees' names need to be submitted to the board at its July meeting. The election will take place at the October annual meeting at the lodge. Janet Jacobsen has agreed to chair the committee.

Please contact Janet at bjjacobsen@comcast.net by May 1st if you have members you would like to be considered as candidates or if you have other suggestions or comments. They will be forwarded to all nominating committee members.

For more information, see Article IV of the Obsidian Constitution in Member's Only on our website.

Janet Jacobsen, Nominating Committee Chair

Classifieds

For Rent

MCKENZIE RIVERFRONT CABIN. Giveaway midweek intro rates to Obsidians. Ralph Core 688-0306

For Sale

WOOD - Green fir at the Obsidian Lodge. Split, you haul. \$110/cord, or we can haul for \$40. Half cords available too. Contact John Jacobsen, Grounds Chair:

343-8030 or johnwjacobsen@comcast.net

Note: There is no charge for placing Obsidian Bulletin Classified ads; however, only members can place ads and preference will be given to ads that relate to the club's mission and our members' outdoor activity interests.

Obsidian Calendar

April

- 17 Sat – **Brice Creek**, 7.2m 1000' M, K.Rusow..... 744-7990
- 18 Sun – **N Bank Deer Preserve**, M, Jacobsen 343-8030
- 19 Mon – **S Willamette Tr**, 8m M, Castleberry 726-2412
- 20 Tue – **Discover Newberg**, Bus, J.Speelman 344-3019
- 21 Wed – **Umpqua River Falls**, 7.2m M, Jacobsen .. 343-8030
- 22 Thu – **Pre's Trail**, 4m E, M.Prentice 687-5850
- 23 Fri – **Mystery Canyon—McManigal Johnson**, Potluck
- 24 Sat – **Coburg Hills—Baldy**, 6m 1500' M, Kirk ... 683-7033
- 24 Sat – **Spencer Butte**, Trail Maint, Bell..... 503-884-8829
- 25 Sun – **Dorris Ranch**, 3m E, B.Revere..... 543-3514
- 25 Sun – **Threemile Lake**, 6.5m 650' M, JHackett ... 953-7046
- 27 Tue – **W Eug Wetlands**, Bike E, Montgomery 688-7025
- 28 Wed – **Mt. Pisgah**, 3m 1000' E, R.Murdock 345-8305
- 28 Wed – **Tamolitch Falls**, 4.4m 300' E, Revere 543-3514
- 29 Thu – **Summer Trips Leader Training 7pm**, Workshop
- 30 Fri – **Ridgeline Tr**, 4m 950' E, N.Lockyear 485-1283
- 30-May 2 – **Spring Basin/Badlands**, Stockdale 767-3668

May

- 1 Sat – **Brice Creek**, 8.5m 1000' M, J.Ledet 683-2603
- 1 Sat – **Diamond Peak**, Climb, S.Sullivan 342-6546
- 2 Sun – **Cole Mural Open House**, event
- 7-9 Fri-Sun – **Blacklock Pt**, Bkpk 2.5m M, Hovis 345-7788
- 8-9 Sat-Sun – **M Sister**, Climb, W.Deeter 954-0924
- 8 Sat – **Siuslaw R**, Canoe/Kayak 8m M, Lindstrom .. 683-1409
- 9 Sun – **Sweet Creek**, 5m 350' E, B.Revere 543-3514
- 11-12 Tue-Wed – **Columbia R Gorge**, Bus, Cheadle 689-1085
- 11 Tue – **McKenzie R Tr**, 7.8m 200' M, S.Larsen 687-2589
- 12 Wed – **Fall Cr**, 6.8m 200' M, S.Alexander 654-0478
- 14 Fri – **Sweet Creek**, 2.5m 250' E, J.Ewing 344-9197
- 15 Sat – **CASA Mckenzie R Walk**, Duncan 343-8079
- 15 Sat – **Heceta Head**, 7m 400' M, P.Soussan
- 16 Sun – **Fall Creek**, Bike 38m M, S.Hoeg 484-6196
- 16 Sun – **Kentucky Falls**, 4.4m 800' E, J.Ledet 683-2603
- 17 Mon – **Cummins Ridge**, 6m 1200' D, J.Pierce 344-1775

Bulletin Policies

QUESTIONS TO THE BULLETIN STAFF regarding submissions and crediting policy have arisen. Our policies:

Submittal Policy

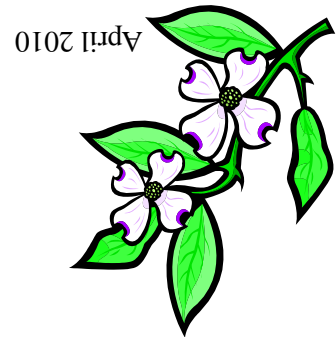
All articles and other materials that are to be included in any *Obsidian Bulletin*, as an insert to that *Bulletin* or included in any way with the *Bulletin*, must be provided to the Publications Committee, preferably in electronic format, prior to the monthly *Bulletin* deadline. The Publications Committee may edit, condense, layout, or otherwise change the material as it requires and at its sole discretion, to meet its standards for publication or to meet space and other layout requirements.

Crediting Policy

All articles published in the *Bulletin* will normally be credited to the author via a byline, either following the article's title or at the end of the article. Photos will also be credited either in the accompanying article's byline along with the author byline or in the photo's caption. Minor informational pieces, notices and obituaries inserted by *Bulletin* staff need not be credited.



Half Dome at Yosemite. Careful observers will notice the traffic ascending the cables to the left. Even more observant folks might see a person standing precariously close to the edge on the far right—you may need to get that old magnifier out. See feature story Page 7. Photo by Ken Frazer



PRESORTED STANDARD
US POSTAGE
PAID
EUGENE, OR
PERMIT 803

OBSIDIANS, INC. IS A NON-PROFIT ORGANIZATION

RETURN SERVICE REQUESTED

OBSIDIANS, INC.
P.O. BOX 51424
EUGENE, OR 97405

